



VOLUNTARY ANNEXATION PETITION – MESA VERDE

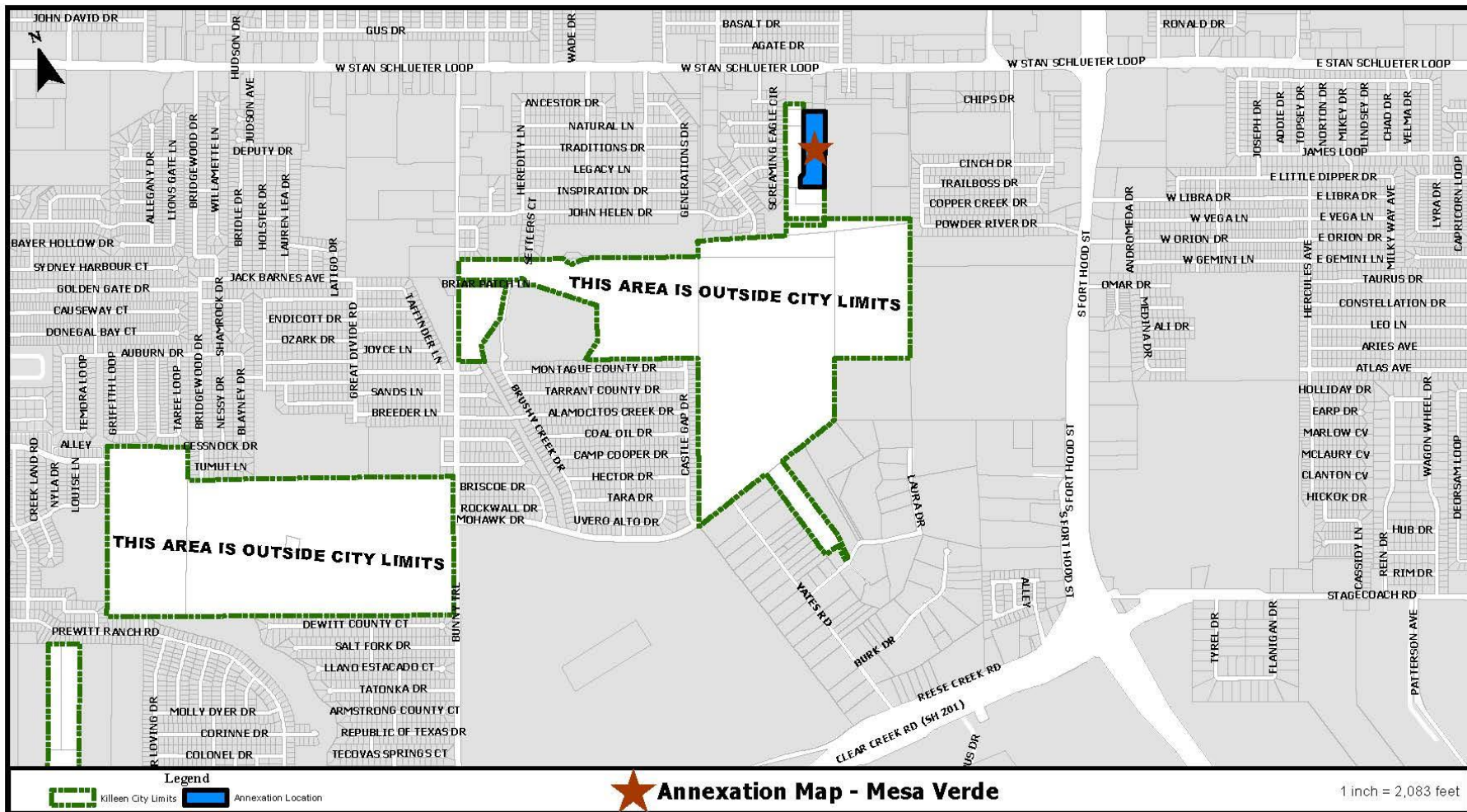
DS-21-100

July 20, 2021

Voluntary Annexation Petition

2

- On May 21, 2021, staff received a petition for voluntary annexation from Quintero Engineering, LLC on behalf of Ms. Terra Campbell for 7.40 acres of land lying contiguous to the existing city limits, generally located south of West Stan Schlueter Loop and approximately 260 feet east of the Eagle Valley subdivision.





Legend



Killeen City Limits

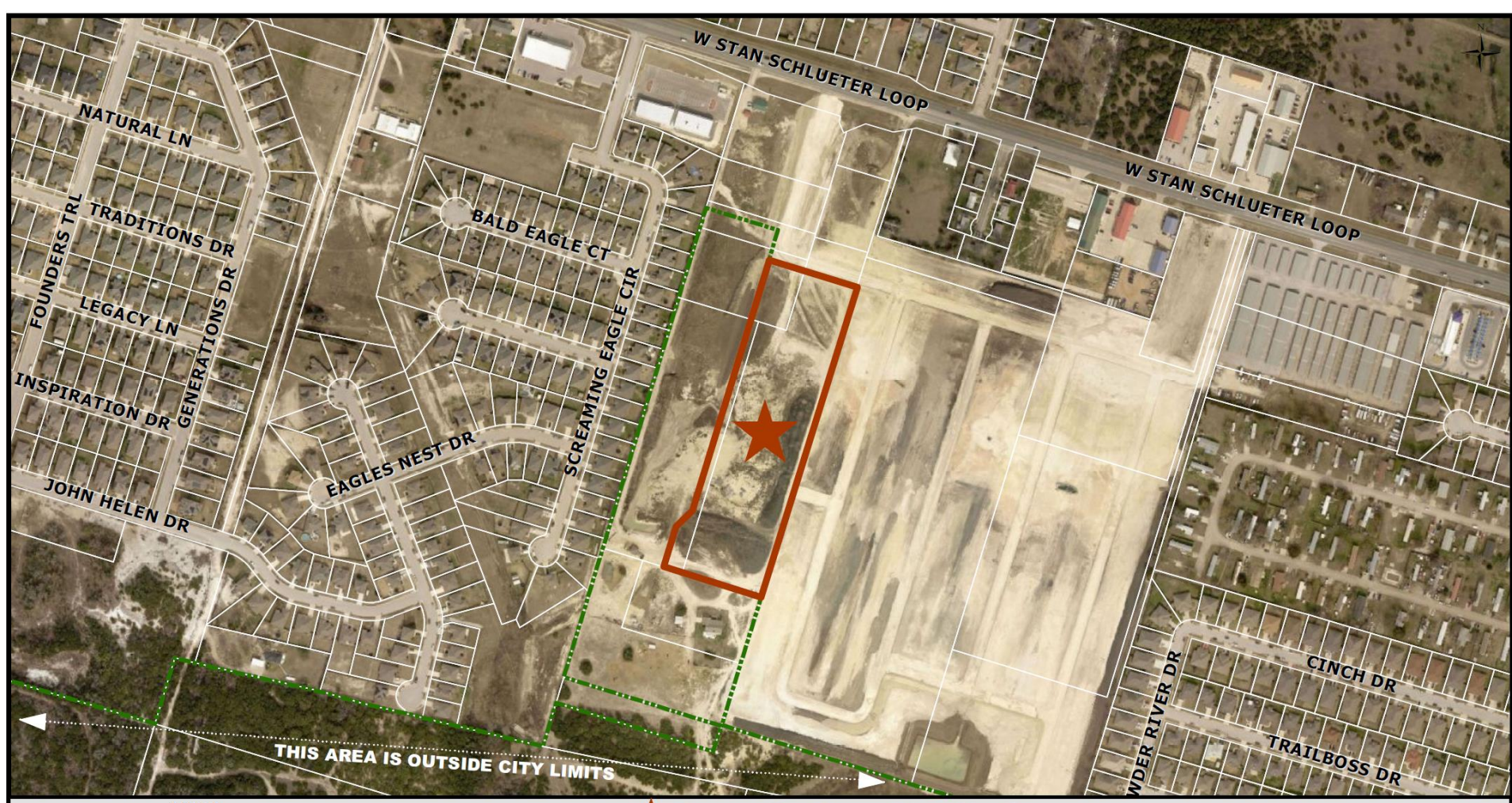


Annexation Location



Annexation Map - Mesa Verde

1 inch = 500 feet



Legend



Killeen City Limits



Annexation Location



Annexation Map - Mesa Verde

1 inch = 500 feet

Voluntary Annexation Petition

6

- Staff is requesting a motion of direction from the City Council to either: 1) elect not to annex the area or 2) direct the City Manager to negotiate and execute a written service agreement.
- If City Council directs the City Manager to negotiate and execute a written service agreement, the annexation process will include public notice, a public hearing, and consideration of an annexation ordinance.

Voluntary Annexation Process

7

- In accordance with LGC 43.0672, the written service agreement must include:
 - 1) A list of each service the municipality will provide on the effective date of the annexation; and
 - 2) A schedule that includes the period within which the municipality will provide each service that is not provided on the effective date of the annexation.

Voluntary Annexation Process

8

- ❑ In accordance with Chapter 43 of the LGC, the Council must conduct one public hearing.
- ❑ At least 10 days and no more than 20 days in advance of the public hearing, the City must publish notice in the newspaper, post on the City's website, and send notice to the school district and each public entity that provides service to the area.
- ❑ LGC 43.0673: Council may adopt an annexation ordinance at the conclusion of the public hearing.

Recommendation

9

- Staff recommends that the City Council provide a motion of direction to either:
 - ▣ Elect not to annex the area; or
 - ▣ Direct the City Manager to negotiate and execute a written service agreement that provides for the extension of full municipal services to the area to be annexed.