



# INTERSECTION SIGNAL PROJECTS CONSTRUCTION CONTRACT

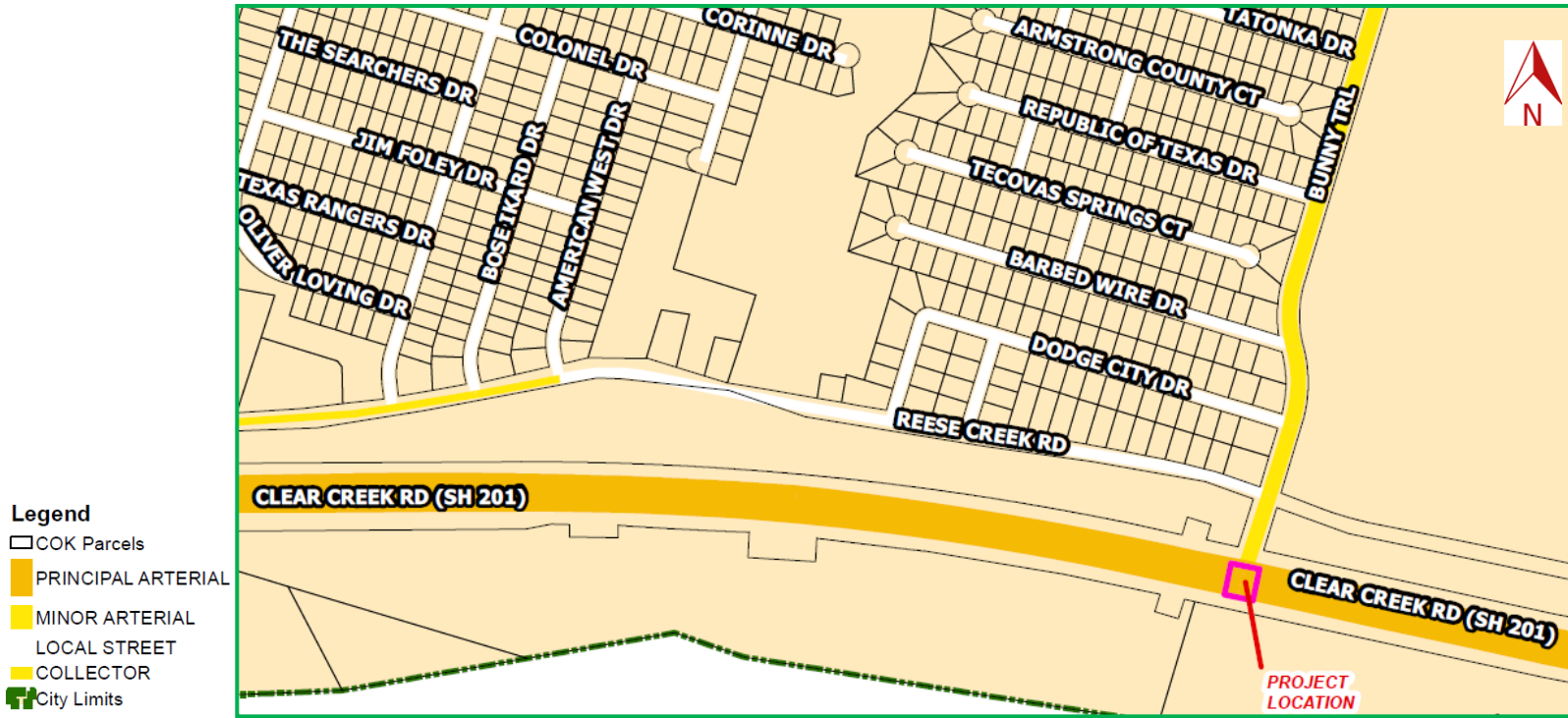
RS-21-046

April 6, 2021

# Background

2

- A study indicated traffic signals are warranted at the following intersections
  - ▣ SH-201 / Clear Creek Road and Bunny Trail
  - ▣ W. Elms Road and Tallwood Drive
- Kimley-Horn provided professional services for design and construction services
- Bids were opened and read aloud on February 25, 2021
  - ▣ Road Solutions, LLC was the lowest bidder with a bid of \$546,359
- Funds are available in FY 21 in the Governmental Capital Project Funds and Child Safety Fund



## Exhibit

### Clear Creek Road and Bunny Trail Intersection Vicinity Map

- The intersection is unsignalized and traffic at that intersection is currently controlled with a STOP sign on Bunny Trail



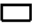





## Exhibit

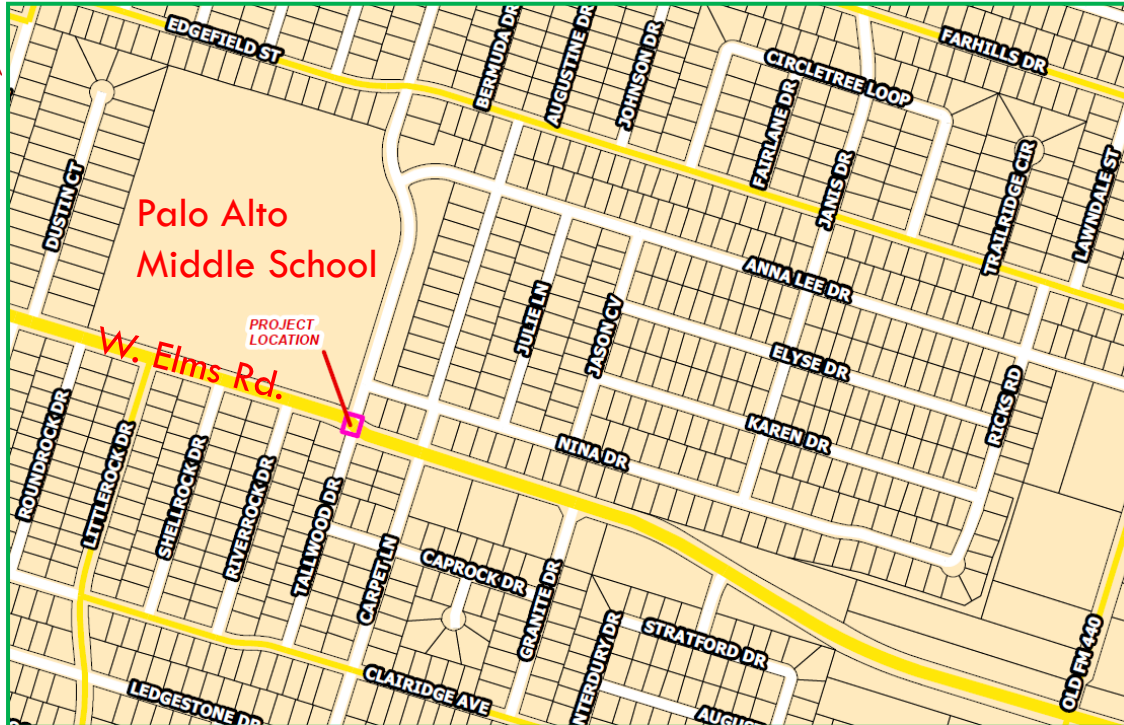
### Clear Creek Road and Bunny Trail Intersection Signalization

- Listed as high priority project in Transportation Capital Improvements Program
- Included and budgeted in the approved FY 20 Capital Improvement Program



### Legend

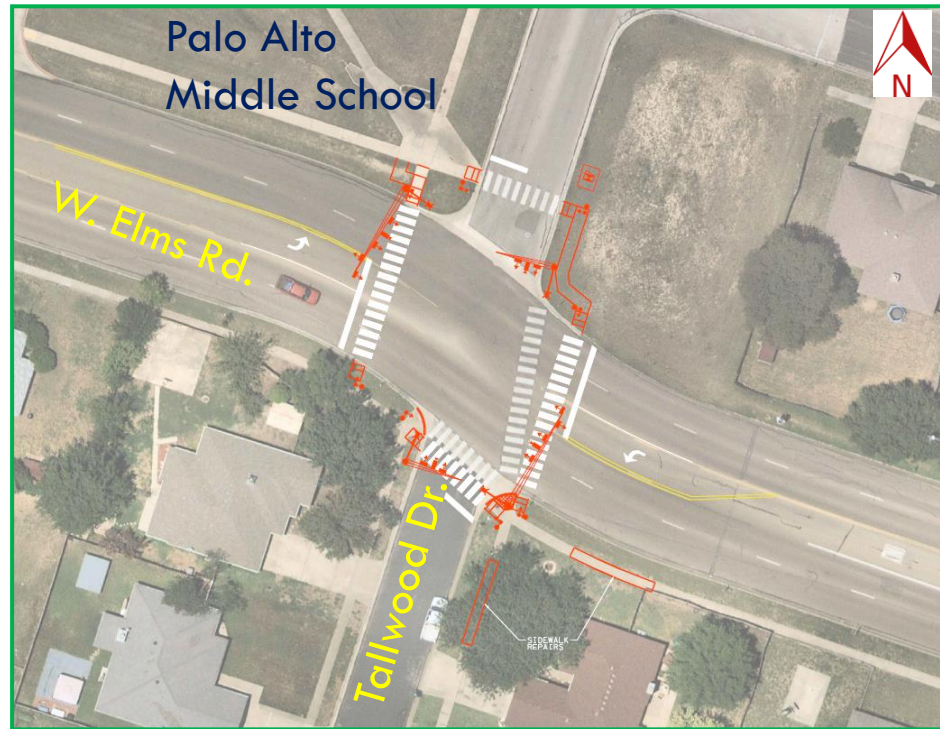
-  COK Parcels
-  PRINCIPAL ARTERIAL
-  MINOR ARTERIAL
-  LOCAL STREET
-  COLLECTOR
-  City Limits



## Exhibit

### W. Elms Road and Tallwood Drive Intersection Signalization

- Traffic is currently controlled by 2-way STOP signs on Tallwood Drive.



## Exhibit

### W. Elms Road and Tallwood Drive Intersection Signalization

- Project provides pedestrian and safety improvements near Palo Alto Middle School



# Alternatives

7

- ❑ Do not move forward with the traffic signal projects at this time
- ❑ Award a construction contract to Road Solutions, LLC for the construction of the traffic signal projects in the amount of \$ 546,359

# Recommendation

8

- Authorize the City Manager or his designee to enter into a contract with Road Solutions, LLC in the amount of \$ 546,359 to construct the two traffic signal projects and to execute any and all changes within the amounts set by state and local law