



BELL CO. WCID NO. 1 BOUNDARY UPDATE

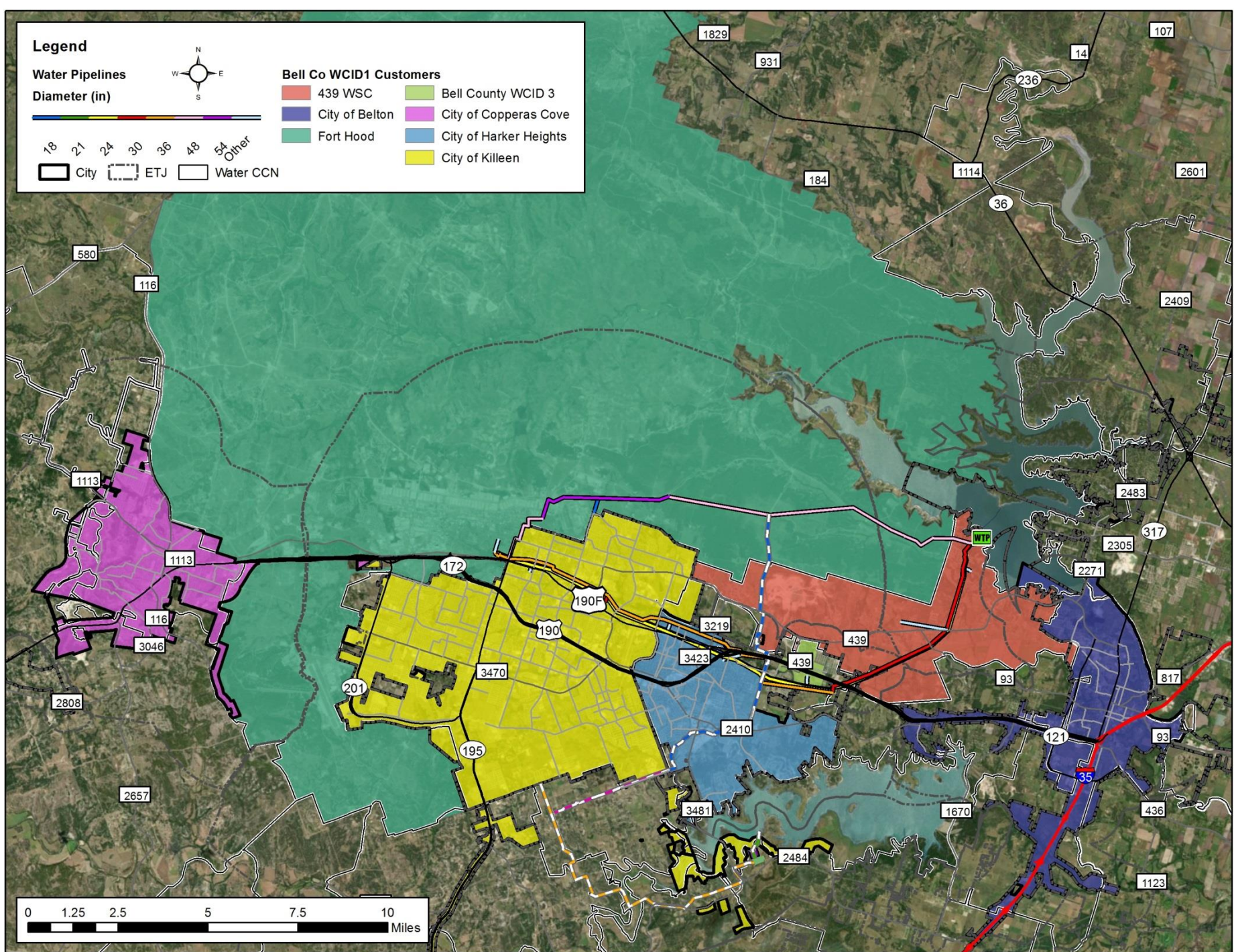
DS-19-003

January 8, 2019

Background

2

- ❑ The original limits of Bell Co. WCID No. 1 were the 1952 Killeen City Limits.
- ❑ Limits were expanded in 1985 to the Killeen City Limits at that time.
- ❑ During the 2018 election the topic of expanding boundaries was discussed.
- ❑ The District currently serves seven entities with an estimated population of 275,000.
- ❑ Recent board recommendation was to pursue legislation that would allow for representation of all entities on the board.
- ❑ Furthermore, the recommendation is that those board members should be appointed by the governing bodies of those entities.
- ❑ The proposal shows six entities to have one appointed board member and The City of Killeen to have three (3) appointed board members.



Representation

4

Entity	# of Members
Killeen	3
Fort Hood	1
Copperas Cove	1
Harker Heights	1
WCID #3 (Nolanville)	1
Belton	1
439 Water Supply Corp.	1
Total Board Members	9

Transition

5

- ❑ 7 new members would become Board Directors in May 2020.
- ❑ Each entity appoints 1 member at this time. John Blankenship, Mitchell Jacobs and Don Farek's term ends at this time.
- ❑ In order to provide for no more than 3 members of the Board to change on any given year, the initial appointment terms will be staggered as shown on next slide.

Terms

6

Entity	Initial Appointed Term (Yrs.)*	Expiration of Initial Appointed Term		
		2021	2022	2023
Fort Hood	3			X
Killeen	3		X,X	X
Copperas Cove	3			X
Harker Heights	2		X	
WCID 3	1	X		
Belton	1	X		
439 WSC	1	X		

*Standard Term is 3 Years

Next Steps

7

- ❑ WCID No. 1 has requested a resolution of support for this item.
- ❑ Discuss questions pertaining to the topic.
- ❑ Motion of direction indicating the preference of the City Council regarding a resolution of support.