



CASE #Z18-17

“M-1” and “B-3” to “R-3F”

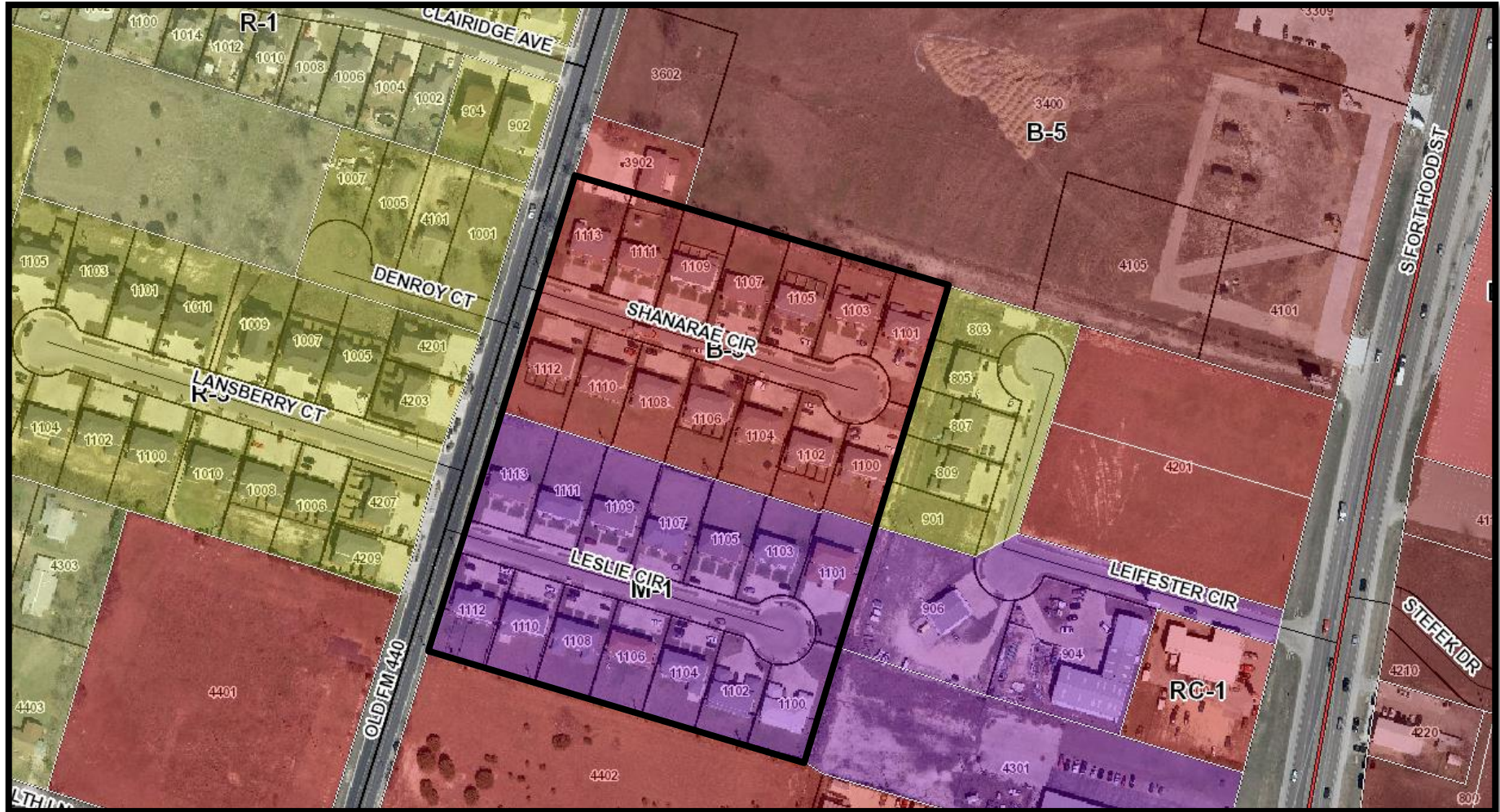
PH-18-023

August 21, 2018

Case #Z18-17: “M-1” and “B-3” to “R-3F”

- This request is submitted by the City of Killeen to rezone Lots 1 through 14, Mesquite West Phase I from “M-1” (Manufacturing District) to “R-3F” (Multifamily Residential District) for a total of 5.045 acres; and Lots 2 through 15, Mesquite West Phase II from “B-3” (Local Business District) to “R-3F” (Multifamily Residential District) for a total of 4.823 acres.
- The properties are addressed as 1100-1113 Leslie Circle and 1100-1113 Shanarae Circle, Killeen, Texas.

Case #Z18-17: “M-1” and “B-3” to “R-3F”



Case #Z18-17: “M-1” and “B-3” to “R-3F”



- Property consists of 28 existing quad-plexes.
- FLUM designation is 'RQ' (Four-Plex Residential)
- Recommended zoning change to “R-3F” is consistent with the FLUM.

Case #Z18-17: “M-1” and “B-3” to “R-3F”



- Staff notified fifty-three (53) surrounding property owners and received no responses in support or opposition.
- The Planning and Zoning recommended approval of this staff initiated action by a vote of 5 to 0.