



## **LARGE TRUCK PARKING IN RESIDENTIAL AREAS**

**DS-18-023**

**March 20, 2018**

# Truck Parking

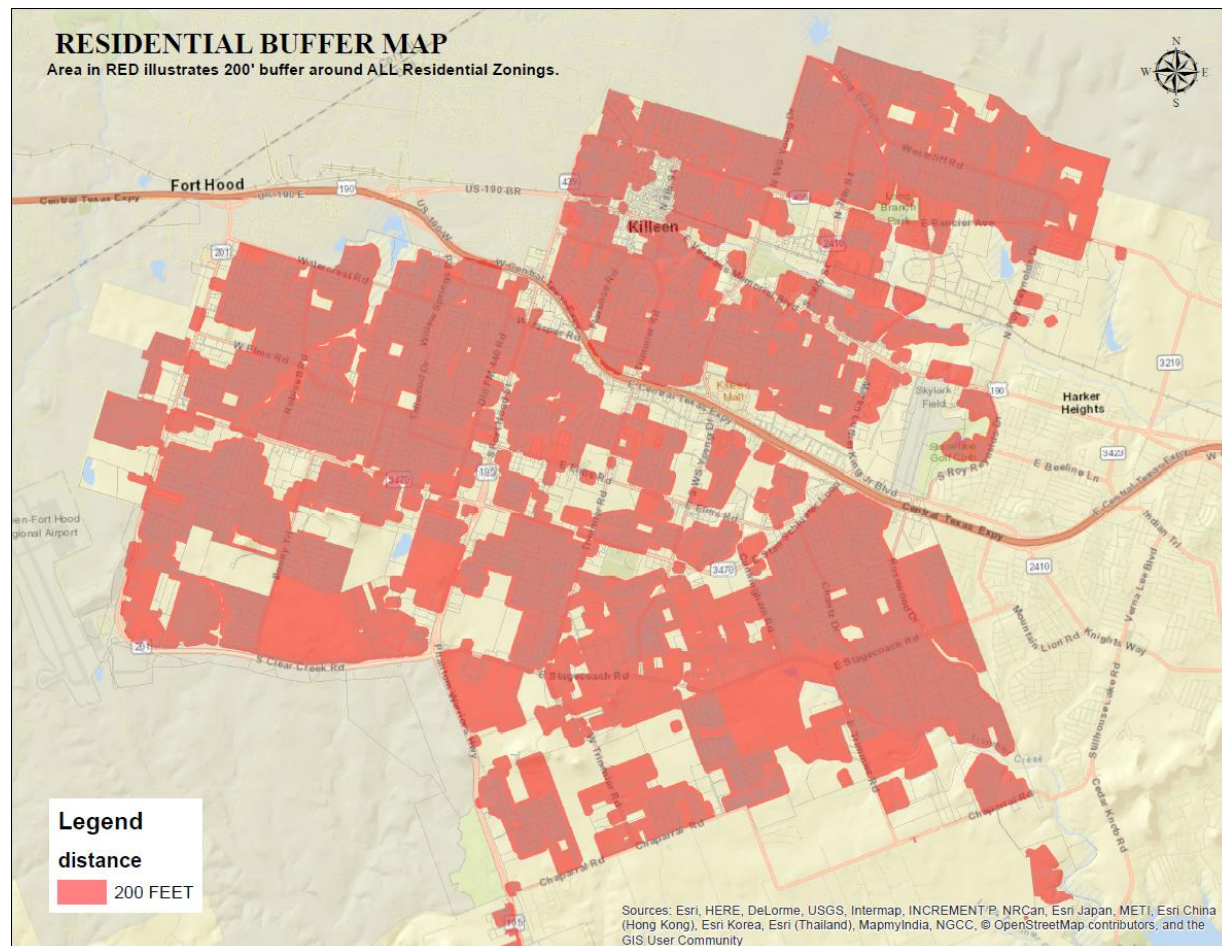
2

- ❑ Section 28-132 *Parking in residential areas* addresses truck and trailer parking in areas including the area *adjacent* to zoned residential areas.
- ❑ City staff reviewed options defining the restriction of parking trucks over one ton to 200, 300, 500 and 1000 feet within a zoned residential area.



3

Truck parking adjacent to residential areas  
Driving Safety and Noise Abatement

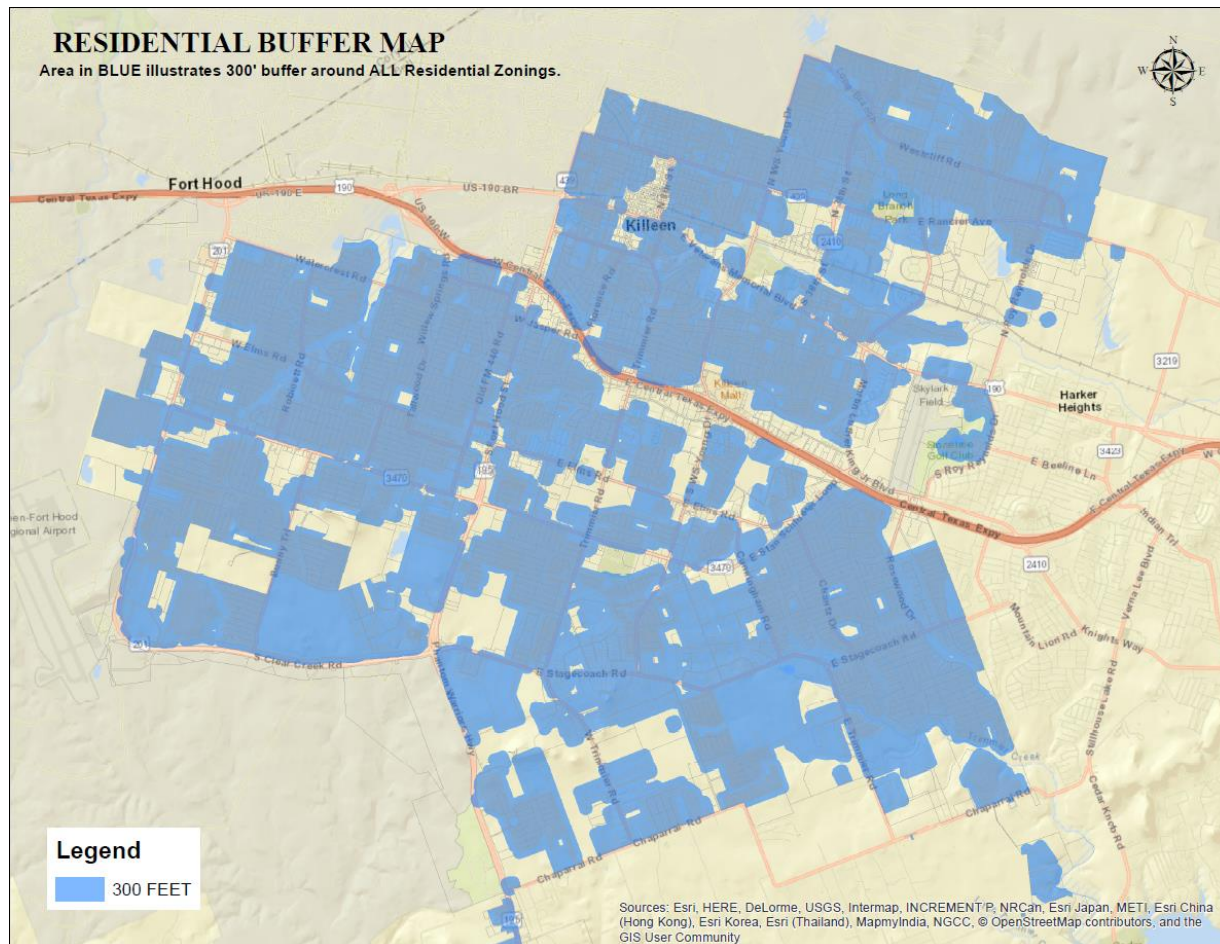


4

## Residential Buffer Map

Area in red illustrates 200' buffer around all Residential Zonings.

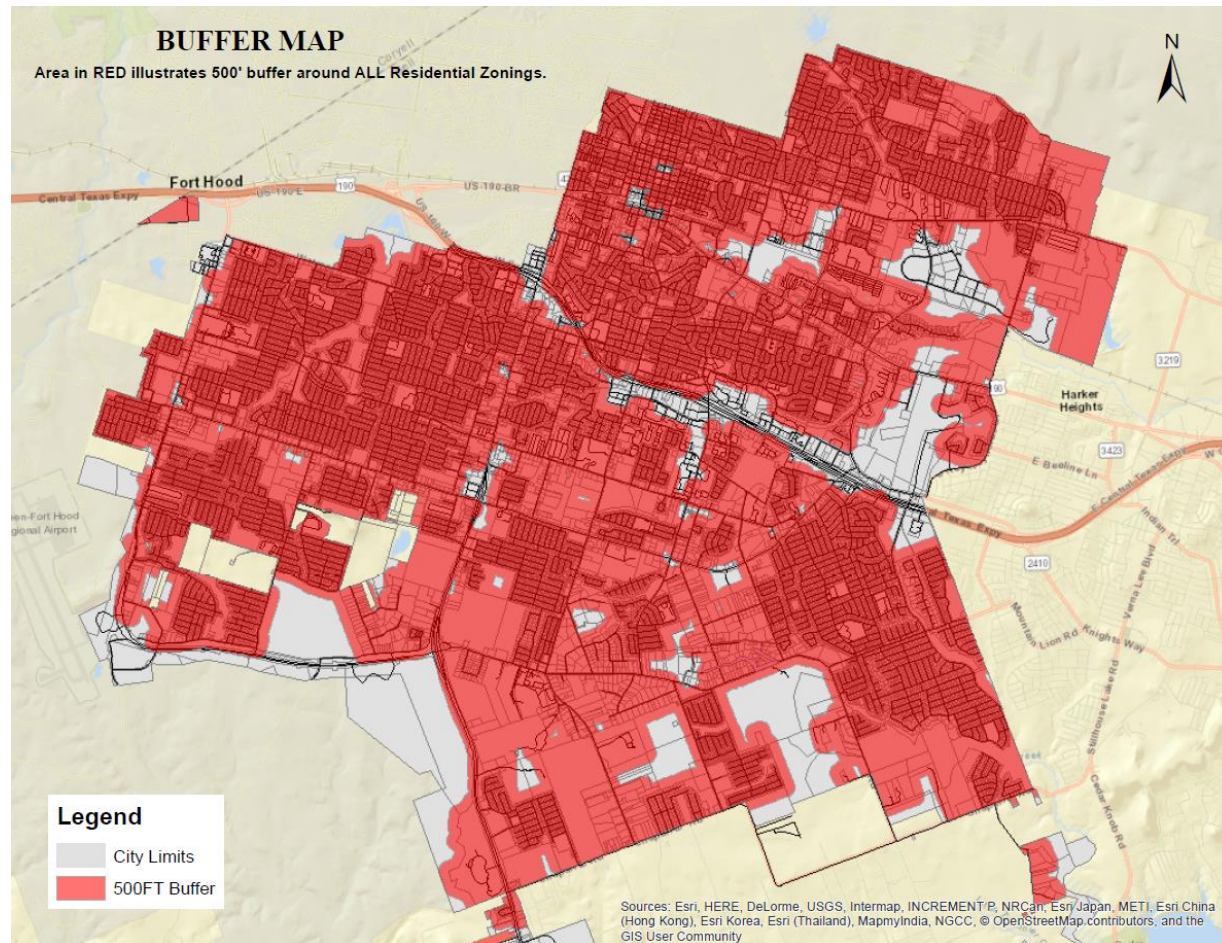




5

## Residential Buffer Map

Area in red illustrates 300' buffer around all Residential Zonings.



6

## Residential Buffer Map

Area in red illustrates 500' buffer around all Residential Zonings.





# Recommendation

8

- ❑ After due consideration of traffic safety, noise abatement and reasonableness, the distance of 500 feet is recommended.
- ❑ Staff recommends Council approve the ordinance Chapter 28, Article V., Sec 28-132: *Parking in residential areas* as revised.