

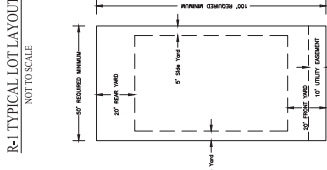
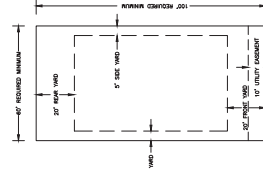


PROPOSED UNIT DEVELOPMENT EXHIBIT - AMENDMENT
 ABSTRACT NO. 857
 KILLEEN, BELL COUNTY, TEXAS

Project No.:	2018-023
Acres:	93.542
Lots:	399
Scale:	1" = 150'
Date:	7/19/2022
Sheet No.:	1 OF 1

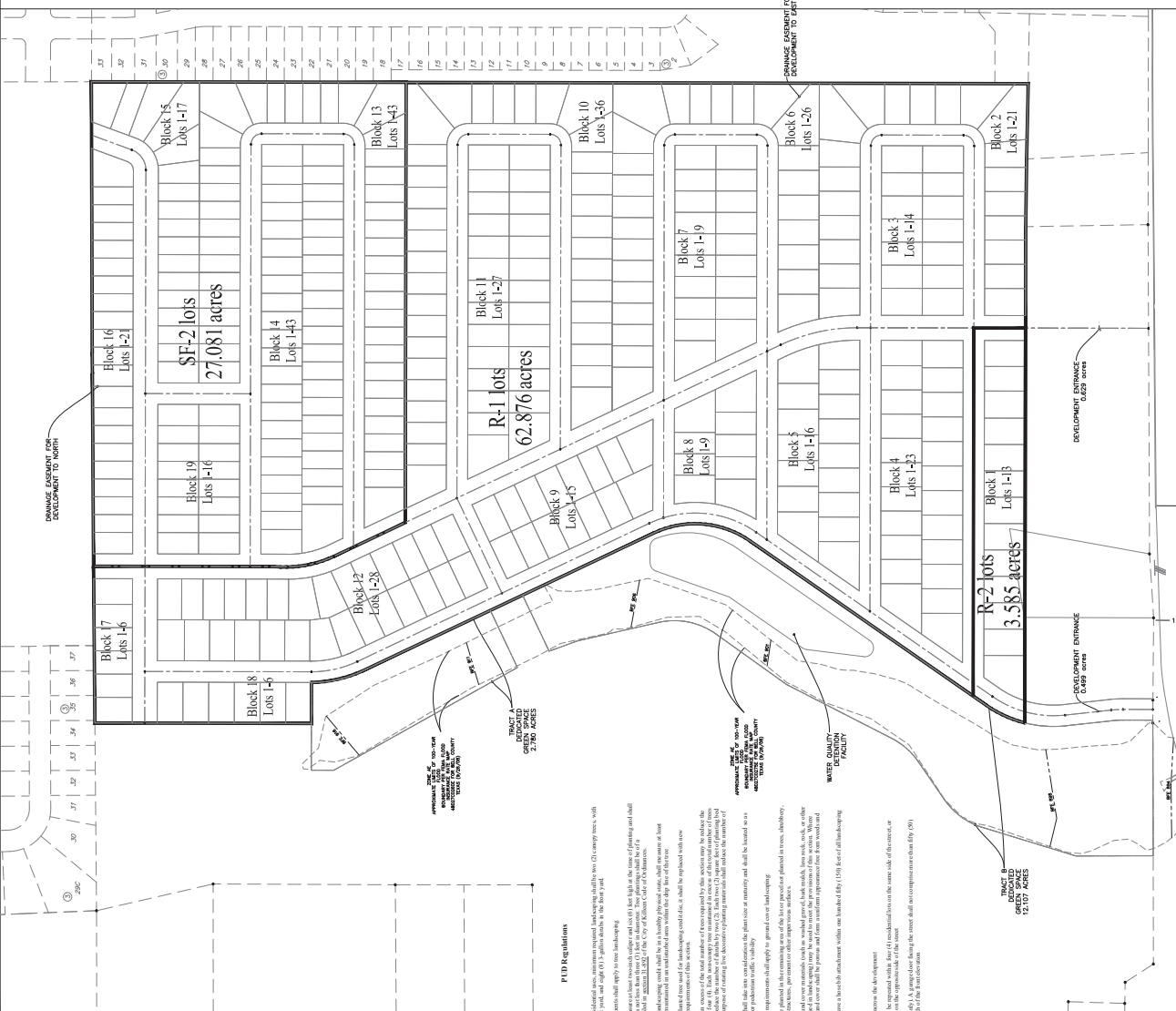
Levy, existing in a mixed use project situated at the northeast corner of Stoughton-Residential Block (R-1), 3,585 acres of Two-Family Residential (R-2) 27,081 acres including a portion of the City of Killeen. The proposed development includes a portion of the City of Killeen. The proposed development includes a portion of the City of Killeen. The proposed development includes a portion of the City of Killeen.

Category	Specification
Lot Density	3.64 LOT/DENS ACRES
Public Access	The proposed development shall be accessed via the proposed collector street intersecting Stoughton Road. The proposed development shall be accessed via the proposed collector street intersecting Stoughton Road. The proposed development shall be accessed via the proposed collector street intersecting Stoughton Road.
Access as required by Sec. 0107.2 of the Fire Code	Primary emergency vehicle access shall be provided along the proposed collector street. The proposed development shall be accessed via the proposed collector street intersecting Stoughton Road.
Signage	Professional sign or main entrance on Stoughton Road. Street signs at corners and intersections.
Streets	Street signs at corners and intersections. Street signs at corners and intersections.
Lighting	Street lighting at corners and intersections. Street lighting at corners and intersections.
Street/Vegetation	Street lighting at corners and intersections. Street lighting at corners and intersections.
Utilities	Street lighting at corners and intersections. Street lighting at corners and intersections.
BMP Credit	Street lighting at corners and intersections. Street lighting at corners and intersections.



Proposed PUD Changes

PUD for R-1 Lots from 20' front and rear	62,876
PUD for SF-2 Lots from 20' front and rear	27,081
PUD for R-2 Lots - No changes	3,585



PUD OVERALL MAP & SUMMARY
 SCALE: 1" = 150'

PUD Regulations

- Landscaping: Landscaping shall be provided in accordance with the City of Killeen Landscaping Ordinance. Landscaping shall be provided in accordance with the City of Killeen Landscaping Ordinance.
- Signage: Professional sign or main entrance on Stoughton Road. Street signs at corners and intersections.
- Street/Vegetation: Street lighting at corners and intersections. Street lighting at corners and intersections.
- Utilities: Street lighting at corners and intersections. Street lighting at corners and intersections.
- BMP Credit: Street lighting at corners and intersections. Street lighting at corners and intersections.

The following standards shall apply to the development:

- When the City of Killeen has the authority to exercise its police power, the City of Killeen shall have the authority to exercise its police power.
- When the City of Killeen has the authority to exercise its police power, the City of Killeen shall have the authority to exercise its police power.
- When the City of Killeen has the authority to exercise its police power, the City of Killeen shall have the authority to exercise its police power.
- When the City of Killeen has the authority to exercise its police power, the City of Killeen shall have the authority to exercise its police power.