



LARGE TRUCK PARKING IN RESIDENTIAL AREAS

DS-18-017

February 20, 2018

Truck Parking

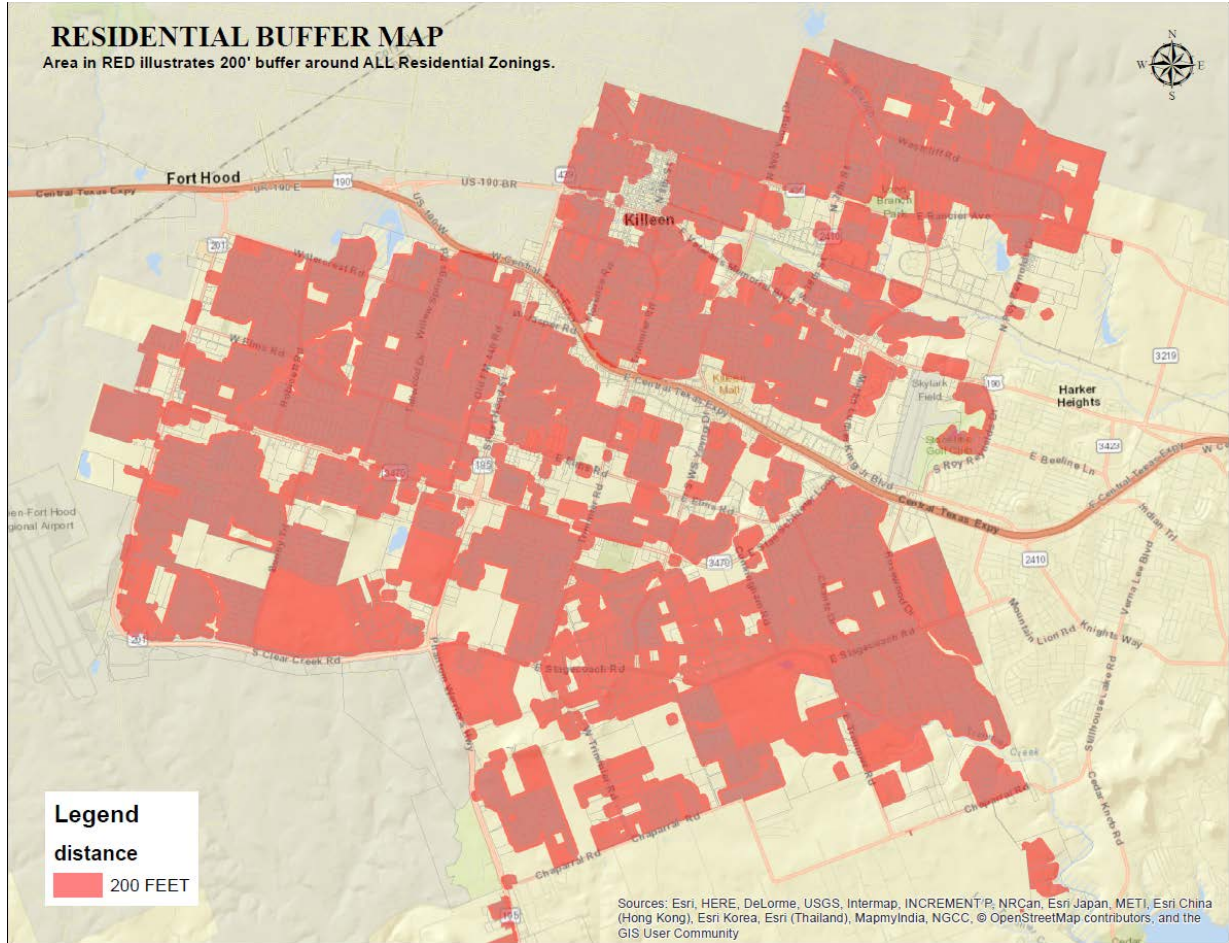
2

- ❑ Section 28-132 *Parking in residential areas* addresses truck and trailer parking in areas including the area *adjacent* to zoned residential areas.
- ❑ City staff reviewed options defining the restriction of parking trucks over one ton to 200, 300, 500 and 1000 feet within a zoned residential area.



3

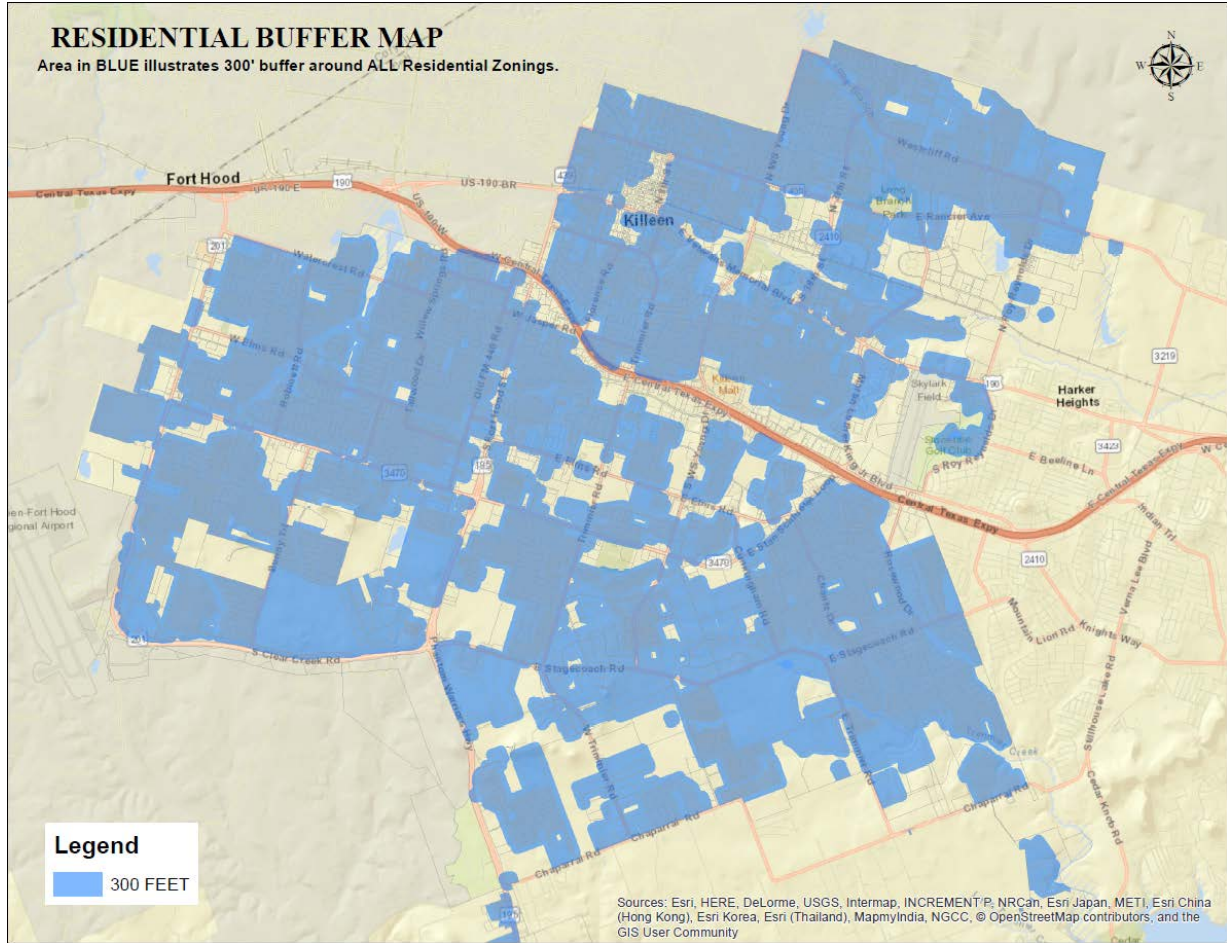
Truck parking adjacent to residential areas
Driving Safety and Noise Abatement



4

Residential Buffer Map

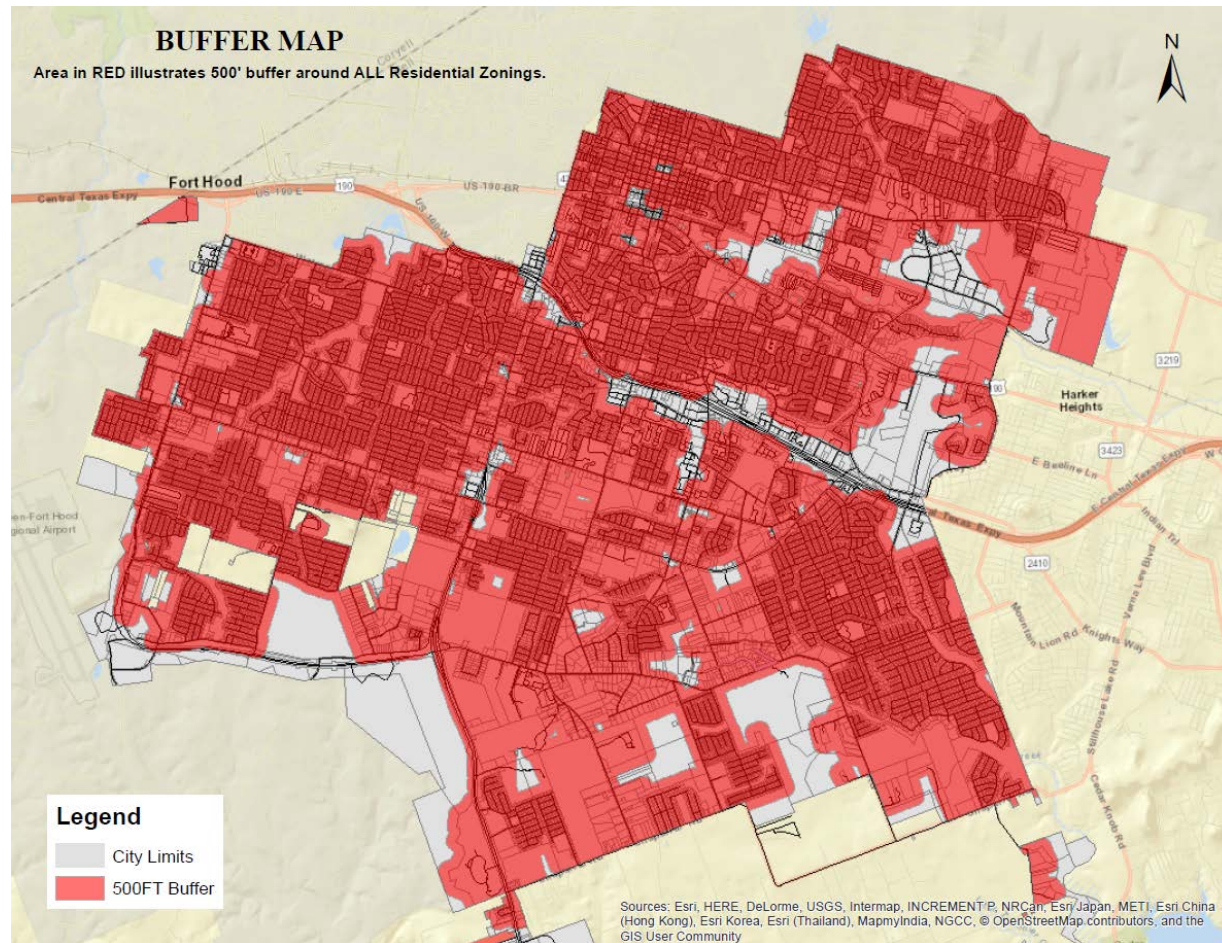
Area in red illustrates 200' buffer around all Residential Zonings.



5

Residential Buffer Map

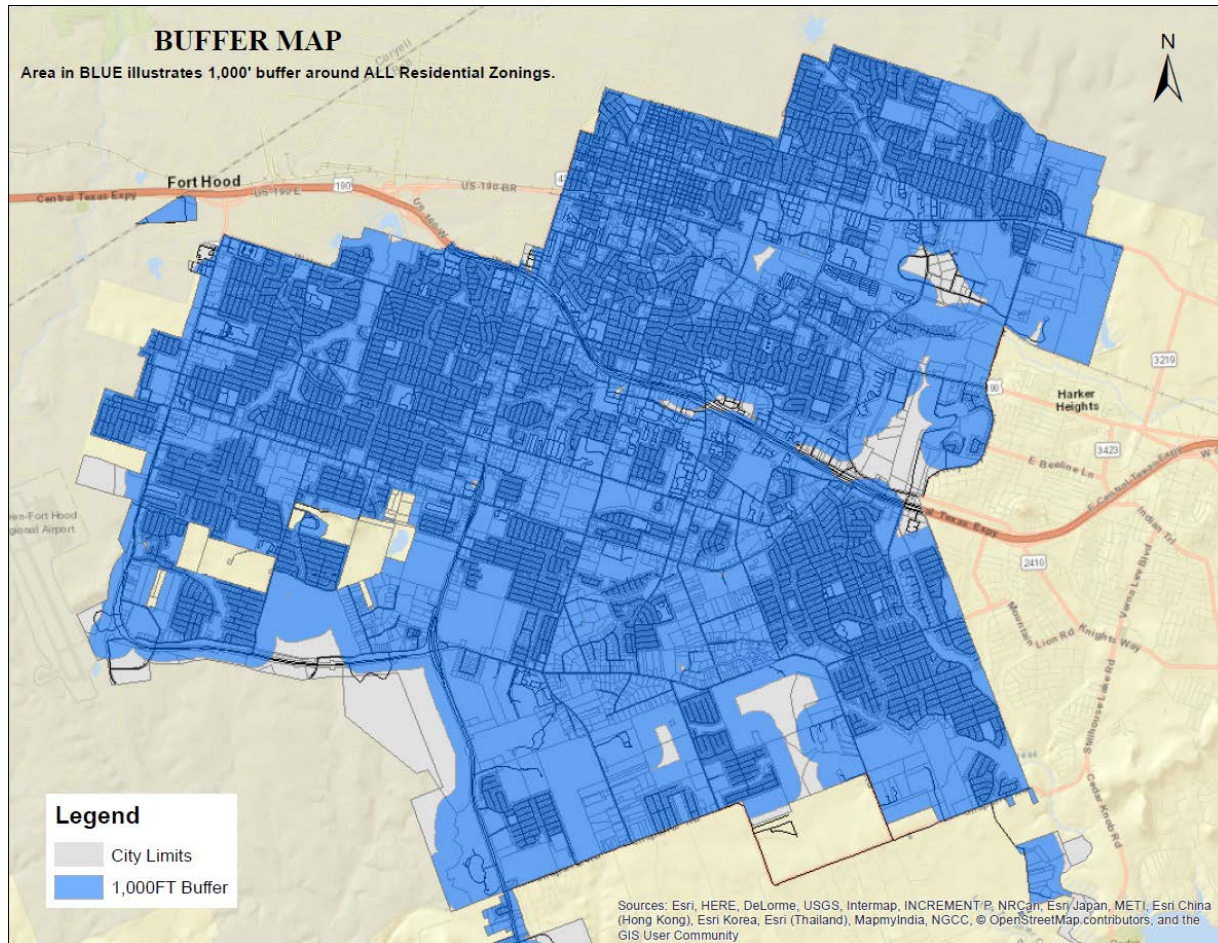
Area in red illustrates 300' buffer around all Residential Zonings.



6

Residential Buffer Map

Area in red illustrates 500' buffer around all Residential Zonings.



7

Residential Buffer Map

Area in red illustrates 1 000' buffer around all Residential Zonings.