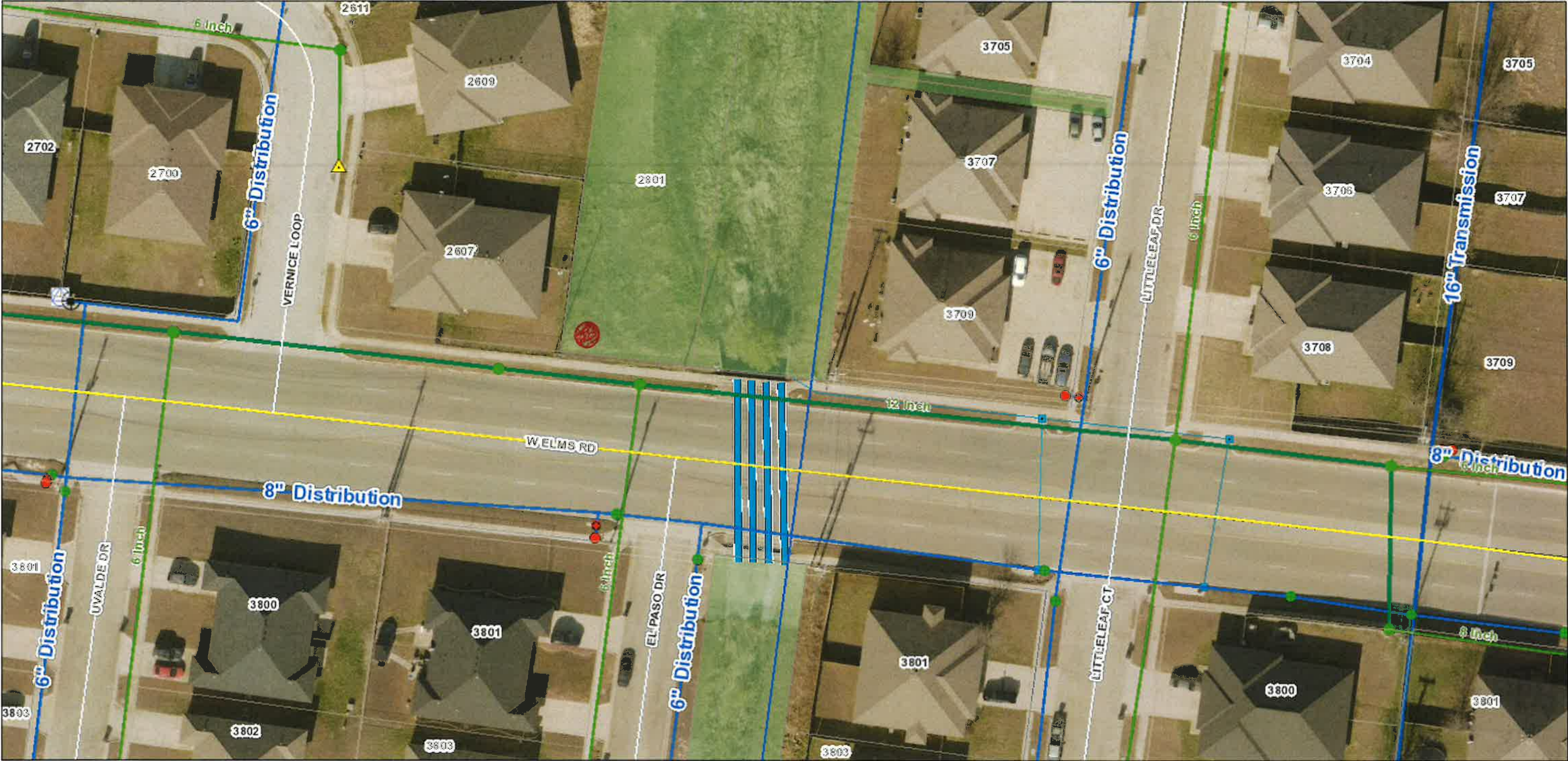
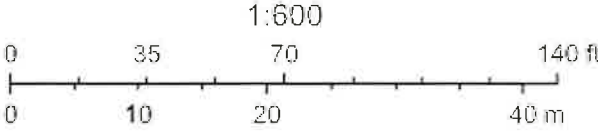


New Siren Location #1 (31.09264°N, 97.77447°W)



3/16/2026, 1:23:20 PM



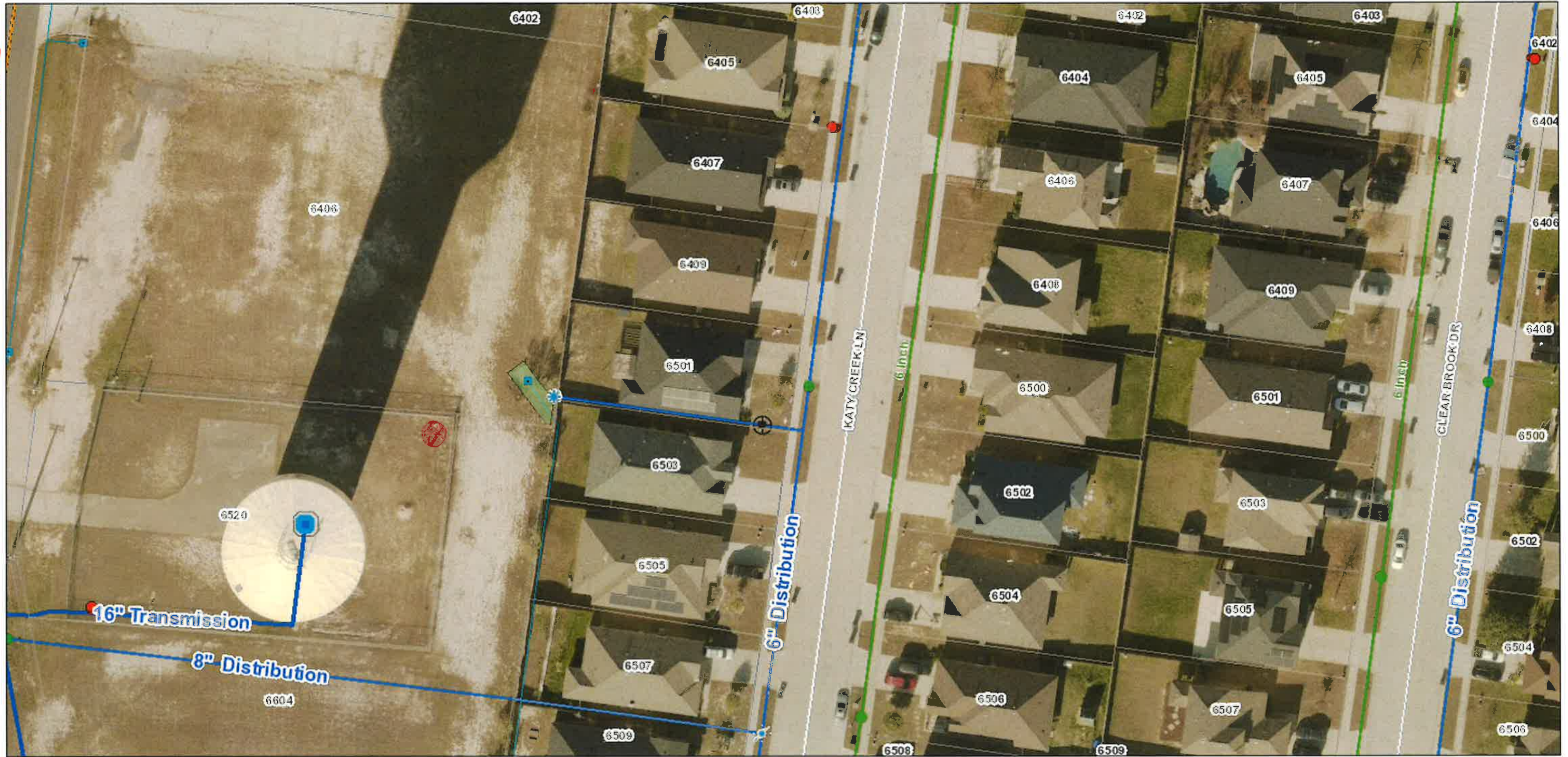
Texas Parks & Wildlife, Esri, HERE, Garmin, INCREMENT P, USGS, EPA, USDA

HOHAWK

# New Siren Location #2

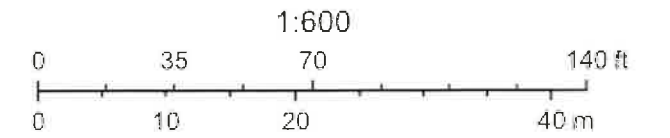
( $31.07633^{\circ}N$ ,  $97.81305^{\circ}W$ )

CLEAR CREEK



3/16/2026, 1:26:44 PM

PREWITT RANCH ICD



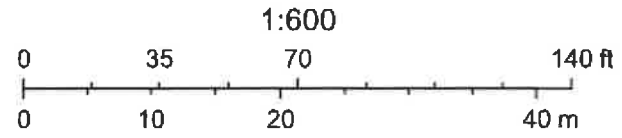
Texas Parks & Wildlife, Esri, HERE, Garmin, INCREMENT P, USGS, EPA, USDA

New Siren Location #3 ( 31.10550°N, 97.72966°W)



3/16/2026, 1:30:07 PM

Phyllis Park

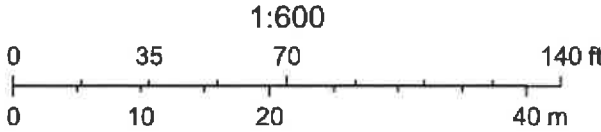


Texas Parks & Wildlife, Esri, HERE, Garmin, INCREMENT P, USGS, EPA, USDA

New Siren Location #4 (31.11938° N, 97.70753° W)



3/16/2026, 1:32:28 PM



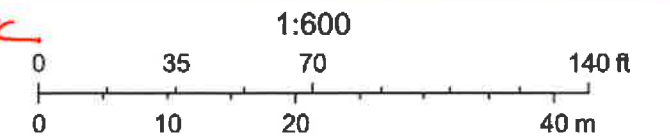
Texas Parks & Wildlife, Esri, HERE, Garmin, INCREMENT P, USGS, EPA, USDA

New Siren Location #5 (31.11246°N, 97.71140°W)



3/16/2026, 1:39:25 PM

COMMUNITY CTR PARK



Texas Parks & Wildlife, Esri, HERE, Garmin, INCREMENT P, USGS, EPA, USDA