



CRIME UPDATE

DS-18-029

April 3, 2018

Crime Update

2

- Information will cover 2016 through present day, with a focus on October 2017, through March 2018.
- The data will compare monthly Part 1 Crimes from 2016-2018.
- Criminal Homicide, Rape, Robbery, Aggravated Assault, Auto Theft, Larceny and Burglary. (Part One Crimes)

Crime Update

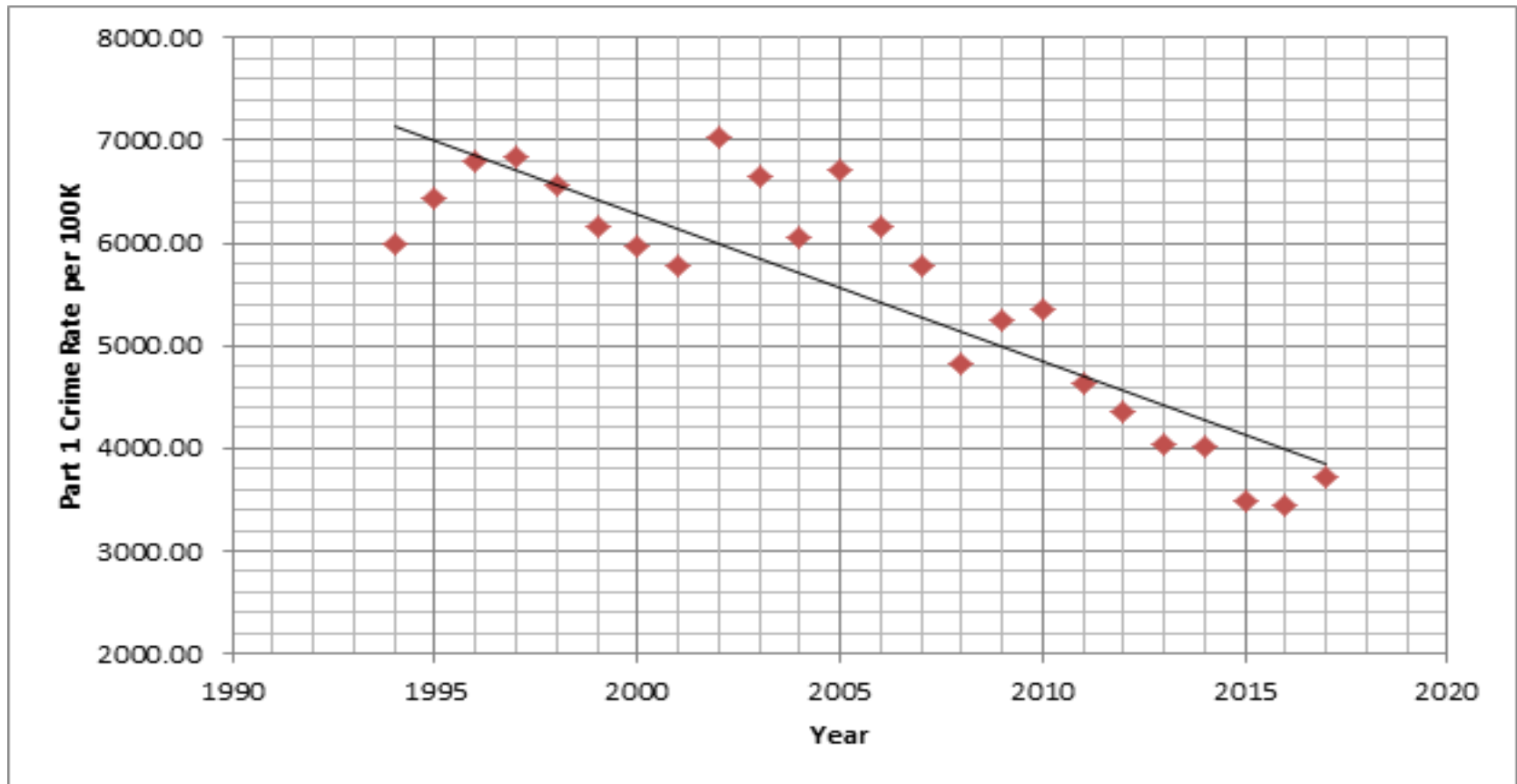
3

- Hired new Chief of Police - September 1, 2017.
- First 30 days was used to complete assessment of the department.
Conducted a thorough examination of crime data, processes, and workforce.
- Needed a plan - Solicited Department of Justice (OJP) for assistance.

Crime Update

4

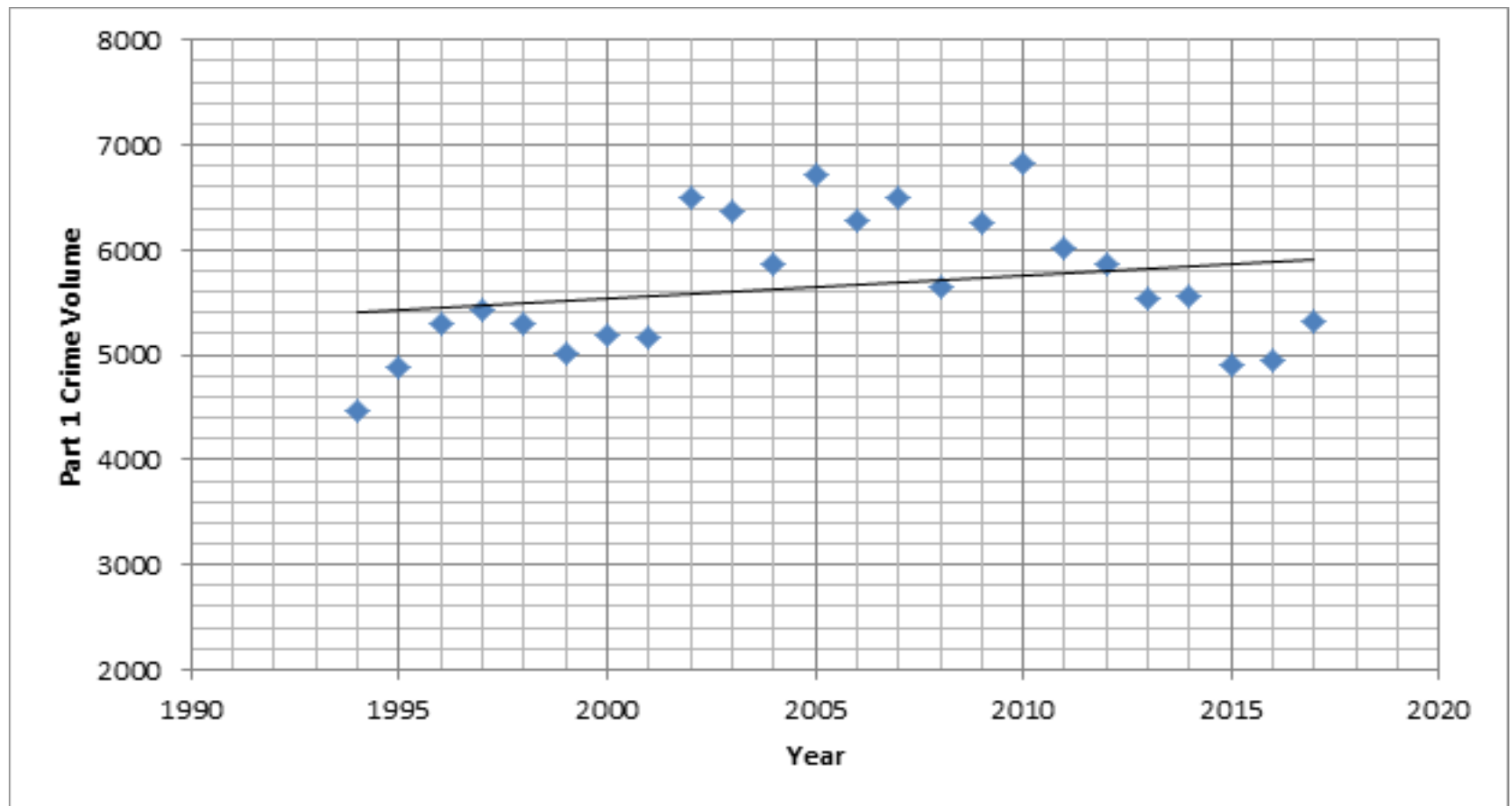
Crime Rate - Commonly used to compare a communities crime as it relates to their current population with other cities.



Crime Update

5

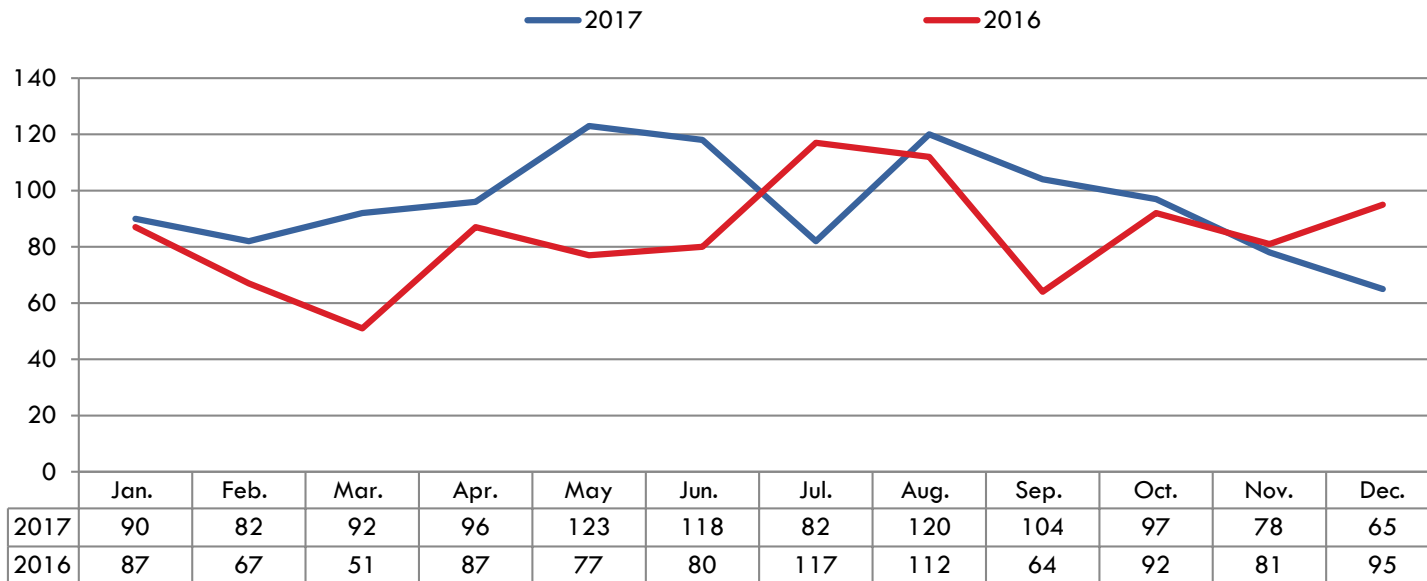
Volume - Raw number of reported Part One Crimes



Crime Update

Violent Crime 2016 compared to 2017

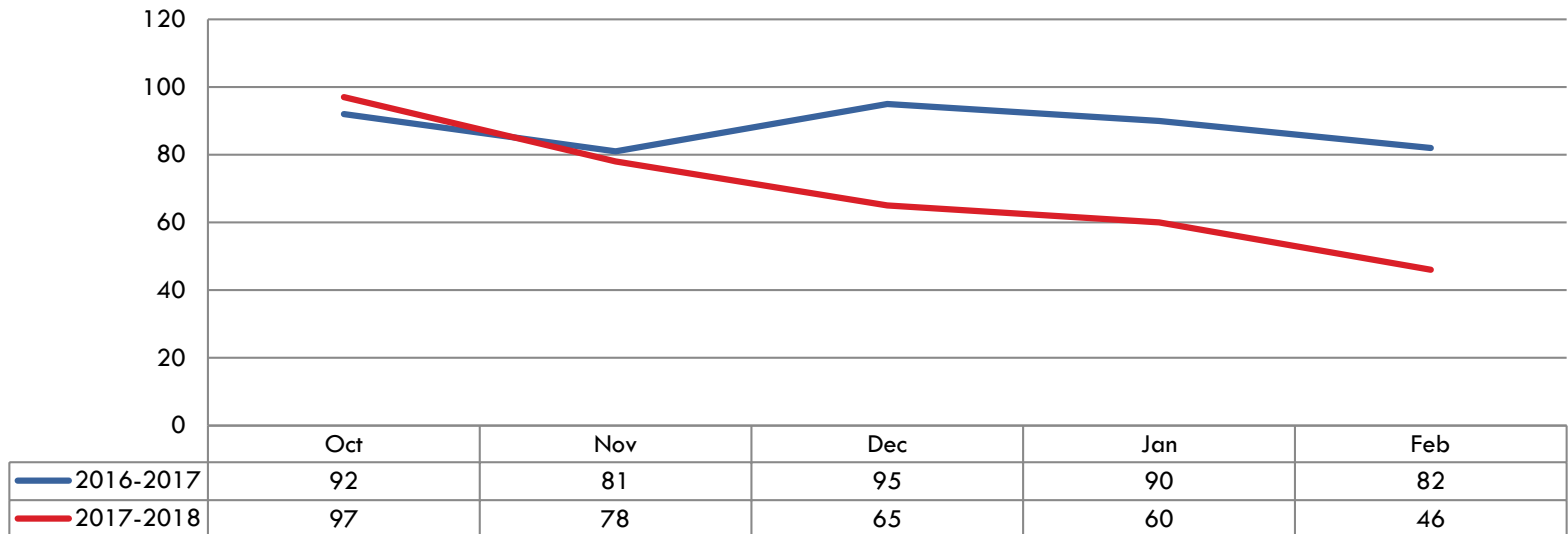
January 1, 2016 – December 31, 2017



Crime Update

Violent Crime FY17 compared to FY18

October 1, 2017 – February 28, 2018



Crime Update

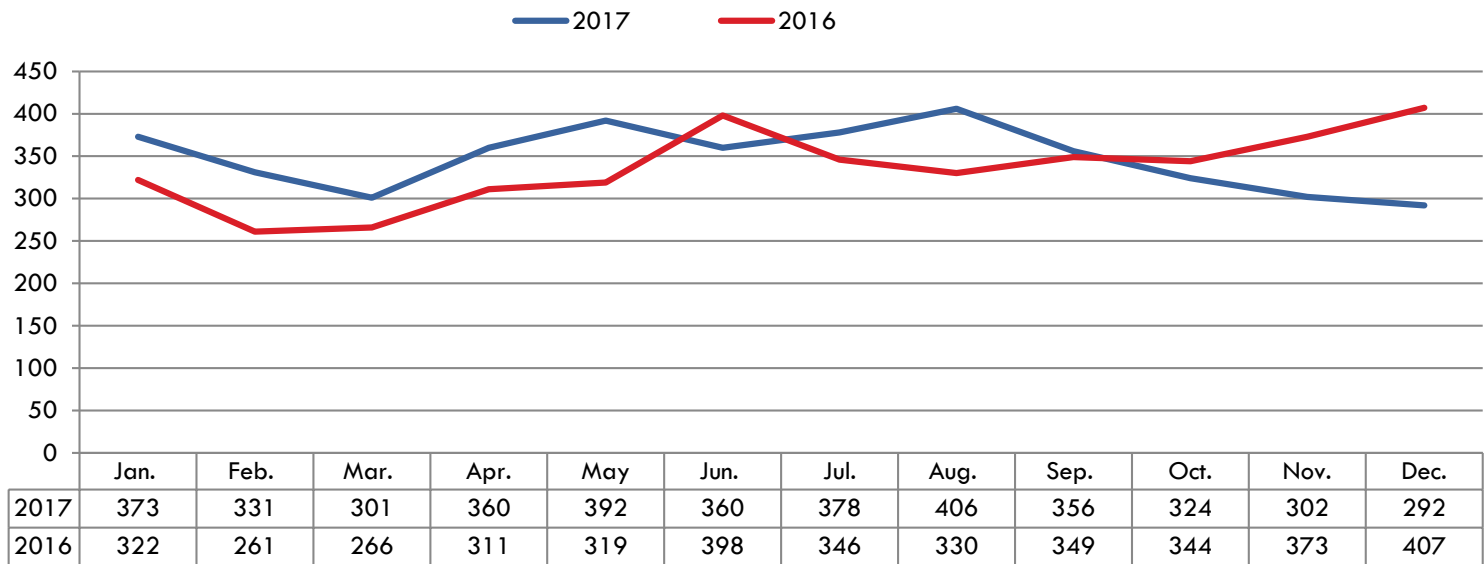
8

- The Killeen Police Department is focused on three (3) newly established Guiding Principles:
 1. Crime, Crime-Weekly COMPSTAT meeting.
 2. Operational efficiency.
 3. Improve relationship with community.

Crime Update

Non-Violent Crime FY16 versus FY17

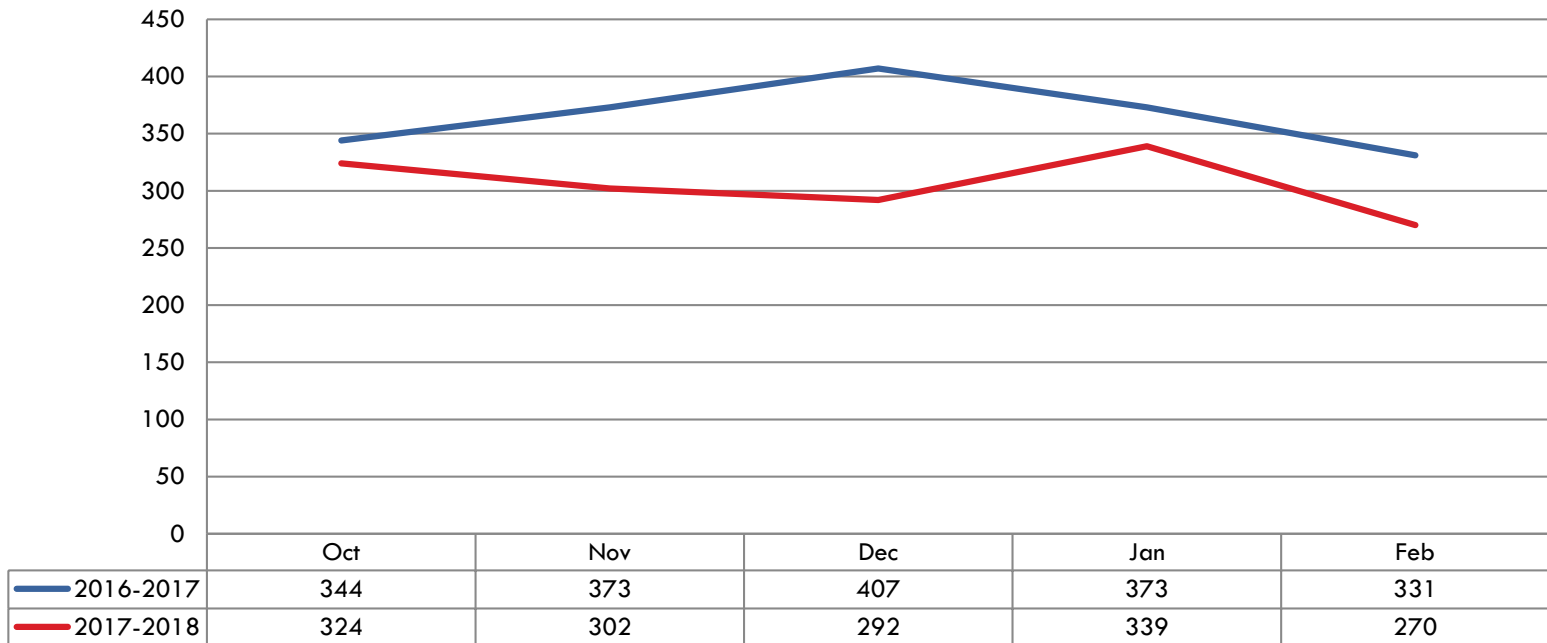
January 1, 2016 – December 3, 2017



Crime Update

Non-Violent Crime FY17 versus FY18

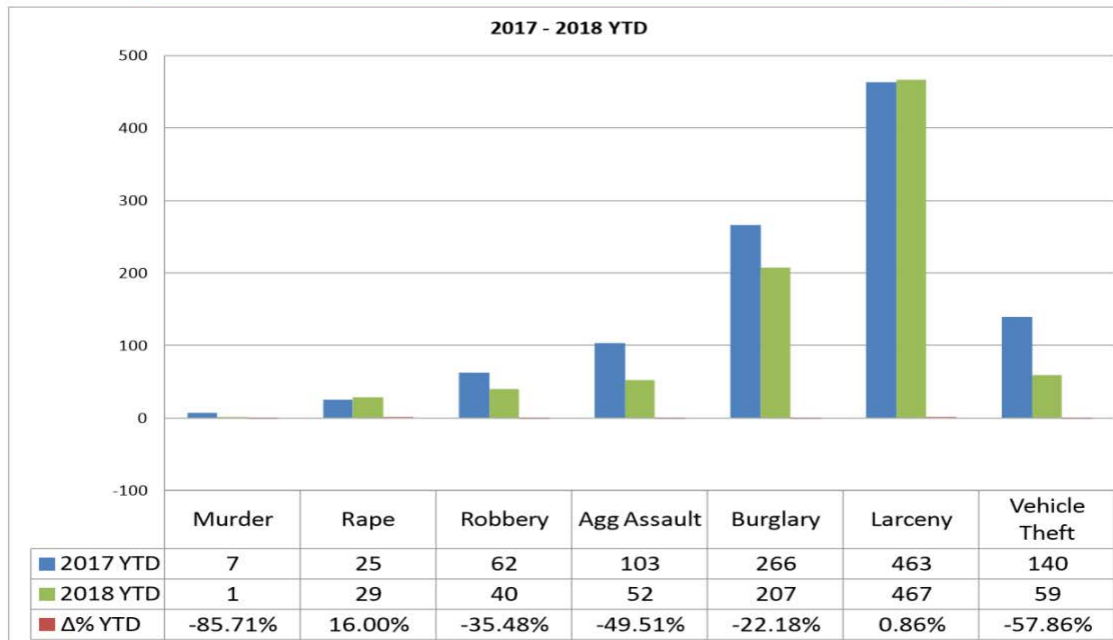
October, 1, 2017 – February 28, 2018



Crime Update

Snapshot of crime as of March 18, 2018, compared to same time last year

YTD Crime Index Volume—% of change



NC= Not Calculable, percentages cannot be calculated.

Crime Update

12

□ Summary

The Killeen Police Department is aware of many challenges and has faced them head on. We have focused on repeat offenders and the most violent criminals in our community. The Police Department has great partners in the United States Attorney's Office and the Bell County District Attorney's Office and they have committed to assist us in keeping our community safe.