



# CHAPARRAL ROAD RECONSTRUCTION PROJECT

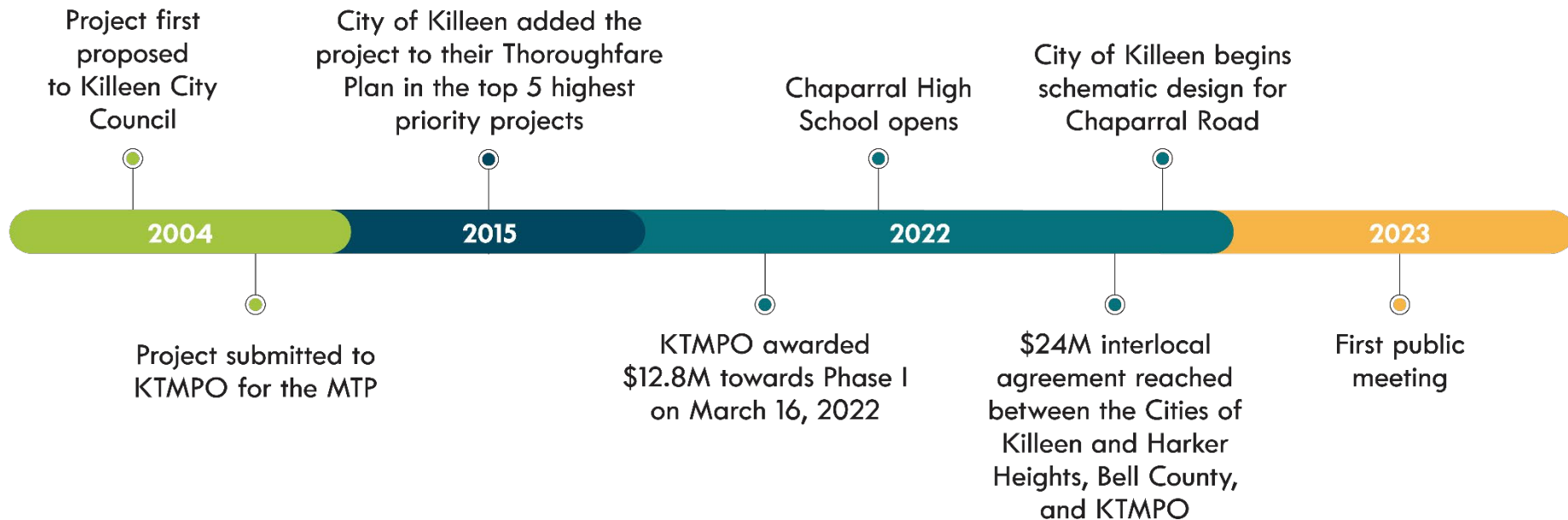
DS-23-082

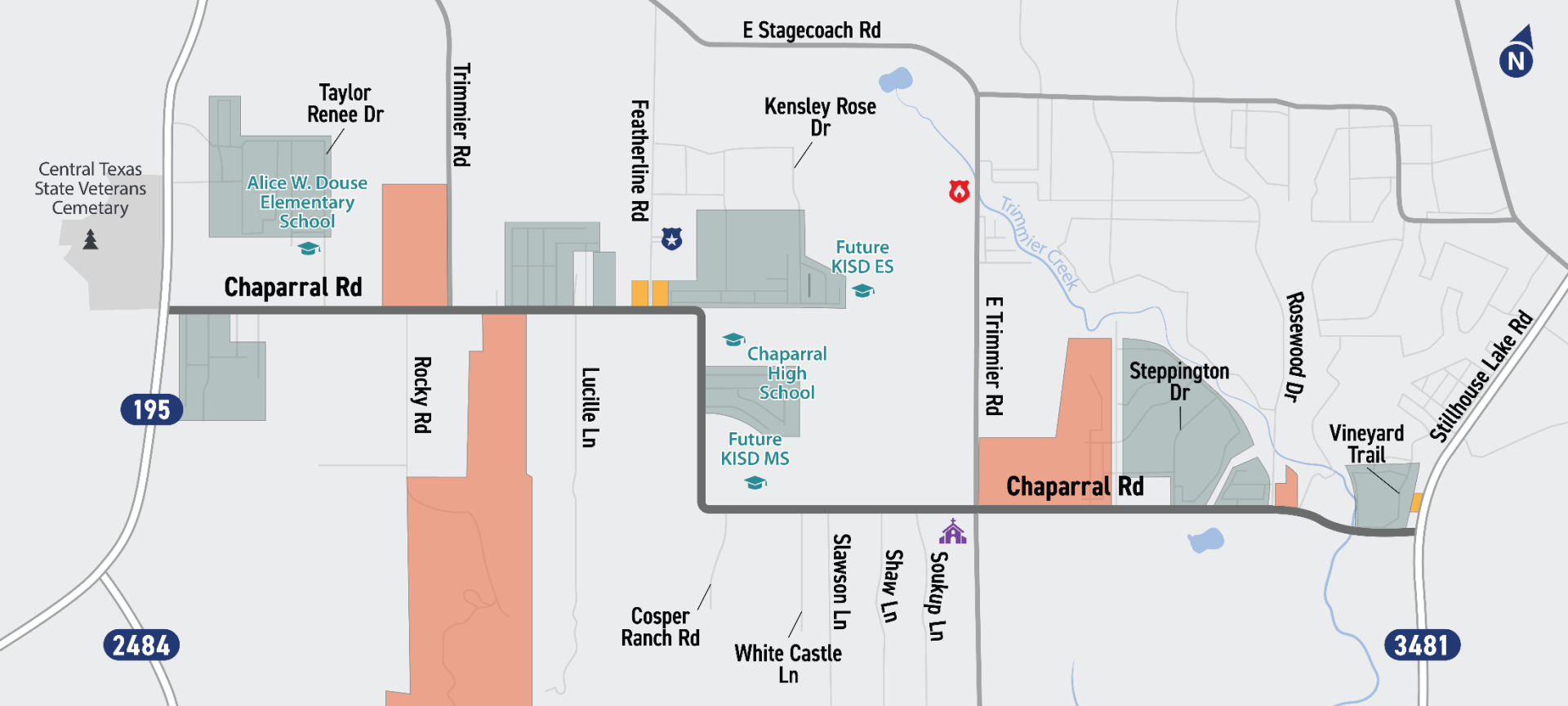
Tuesday, August 22, 2023

# Project Background & History

2

## How We Got Here





**Buildings**

 **4** Schools  
2 Existing • 2 Future





 **2** EMS Locations  
1 Police • 1 Fire

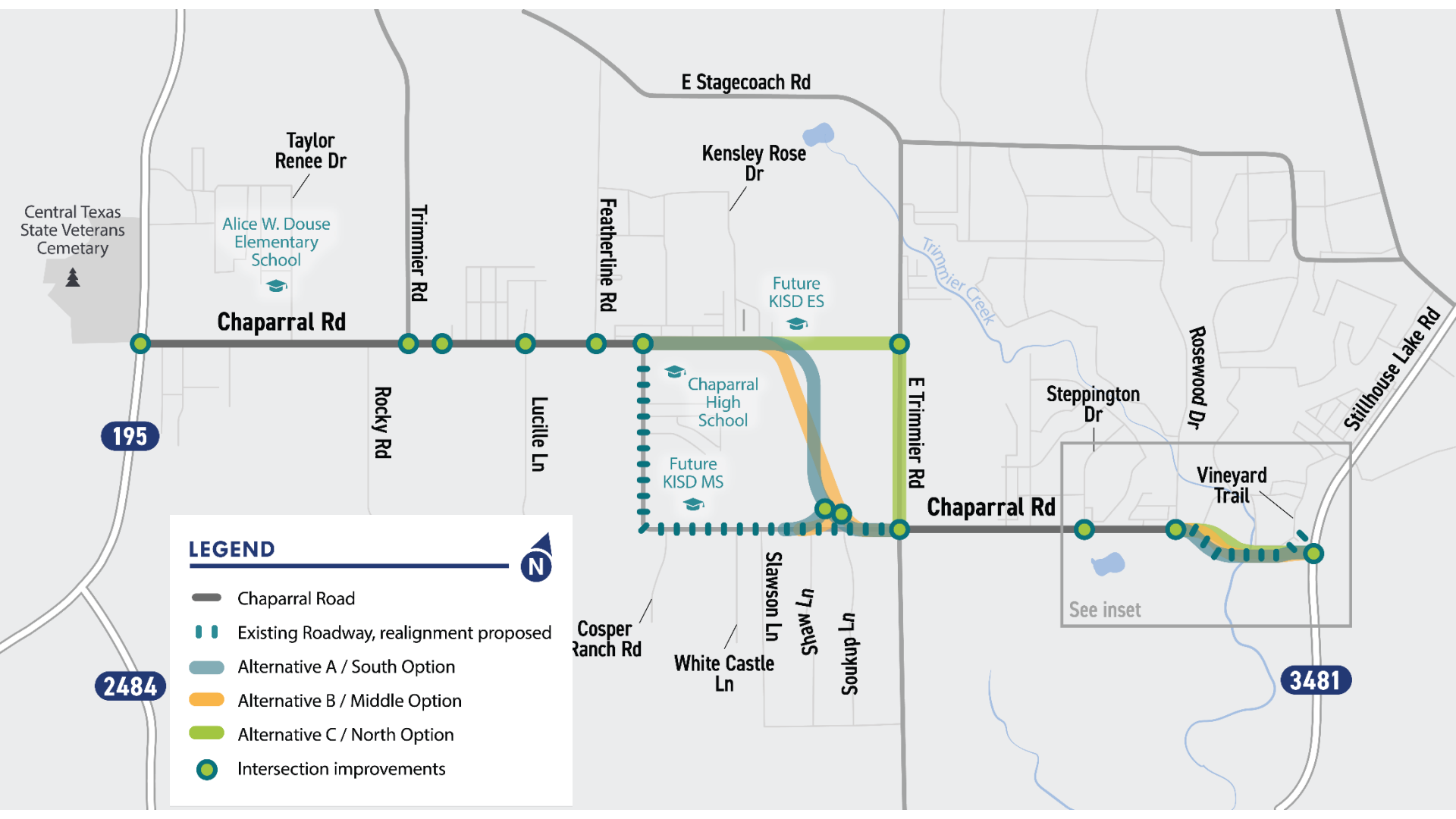
**Developments**

 **9** Existing Residential Developments

 **4** Future Residential Developments

 **3** Future Commercial Developments

-  Chaparral Road
-  Church
-  Pond/Lake
-  Creek



# Proposed Improvements & Alignment Alternatives

5

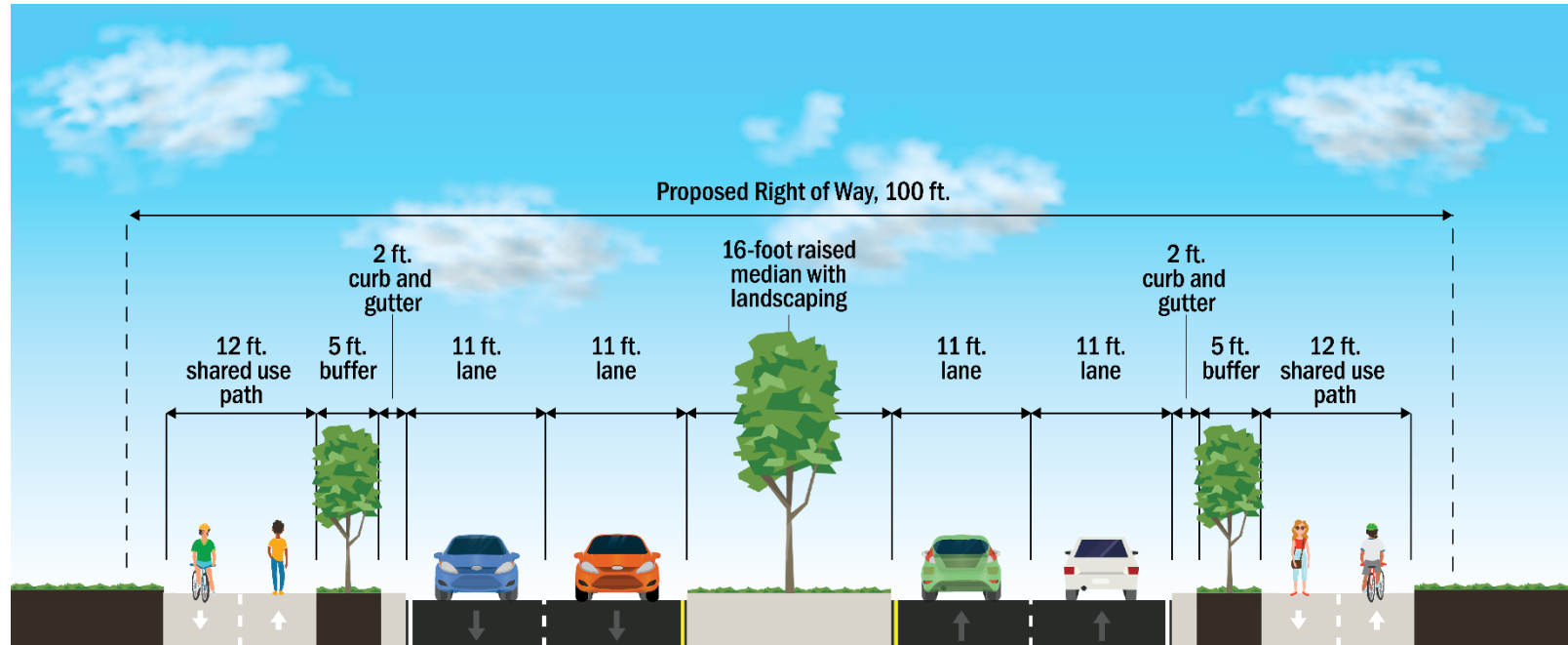
## Proposed improvements:

- ❑ Widen from a 2-lane undivided to a four-lane divided roadway with a raised median
- ❑ Add 12-foot shared-use path and lighting to both sides of the road for pedestrians and cyclists
- ❑ Partially realign Chaparral Road to improve unsafe turns
- ❑ Improve 11 intersections with either roundabouts or signals

# Proposed Improvements & Alignment Alternatives

6

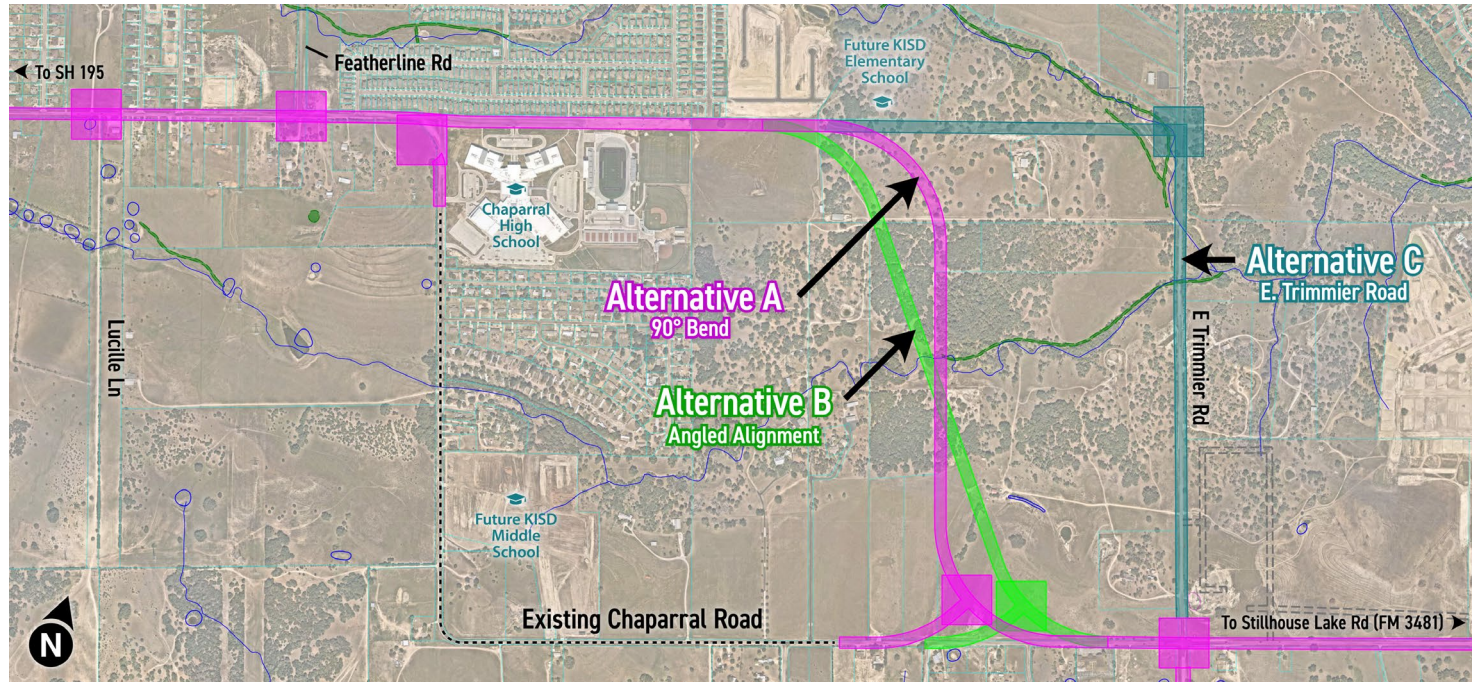
## Proposed Roadway Configuration



# Alternatives Considered & Recommendations

7

## Chaparral Road between Chaparral High School and E. Trimmier Road



# Evaluation Matrix – Chaparral HS to E. Trimmier

8

Criteria	Alternative A 90° Bends	Alternative B Angled Alignment (Recommended)	Alternative C E. Trimmier Rd.
Public Support	23%	51%	26%
Property Impacts	12 parcels, ~ 20 acres	9 parcels, ~ 18 acres	9 parcels, ~ 12 acres
Est. Construction Cost	\$6.4M	\$5.9M	\$7.2M
Construction Phasing	Less traffic disruptions	Less traffic disruptions	More traffic disruptions



# Evaluation Matrix – Chaparral HS to E. Trimmier

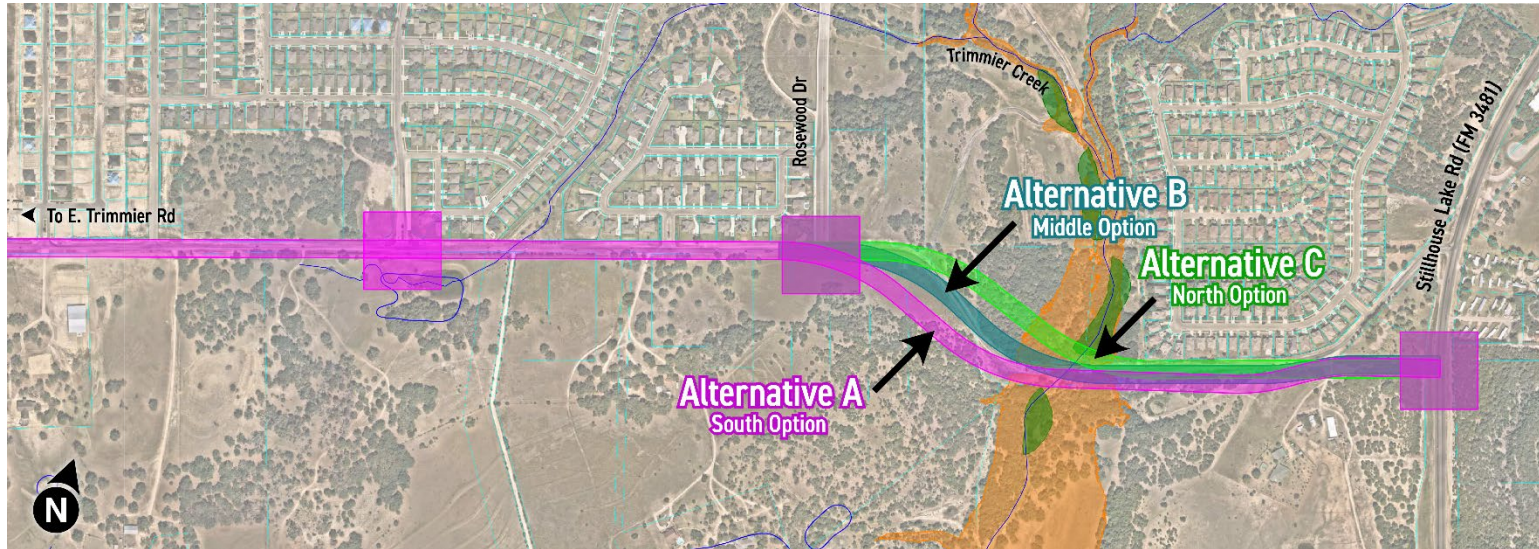
9

Criteria	Alternative A 90° Bends	Alternative B Angled Alignment (Recommended)	Alternative C E. Trimmier Road
Development Potential	More land available	More land available	Less land available
Environmental Impacts	Potentially	Potentially	Potentially
Traffic Flow	Smoother	Smoother	Congestion
Utility Relocations	Fewer expected	Fewer expected	More expected
Other	Need cattle crossing	Need cattle crossing	Easier connection to ES

# Alternatives Considered & Recommendations

10

## Chaparral Road between Rosewood Drive and FM 3481 (Stillhouse Lake Road)



# Rosewood Dr. to Stillhouse Lake Rd. (FM 3481)

11

Criteria	Alternative A South Option	Alternative B Middle Option (Recommended)	Alternative C North Option
Public Support	47%	Added after Public Meeting	53%
Property Impacts	6 parcels, ~ 7 acres	8 parcels, ~ 6 acres	10 parcels, ~ 6 acres
Est. Construction Cost	\$4.8M	\$5.6M	\$4.8M

# Rosewood Dr. to Stillhouse Lake Rd. (FM 3481)

12

Criteria	Alternative A South Option	Alternative B Middle Option (Recommended)	Alternative C North Option
Environmental Impacts	Potentially	Potentially	Potentially
Utility Relocations	Fewer expected	Some expected	More expected
Other	Possible condemnations	Temp bridge during construction	More closely follow existing road

# Public Outreach & Feedback

13

## Stakeholder Meetings

*March 2023*

- ❑ Killeen ISD
- ❑ Bell County
- ❑ City of Harker Heights
- ❑ Killeen-Temple MPO
- ❑ Killeen Police Department
- ❑ Bell County WCID No. 1
- ❑ Killeen Fire Department
- ❑ Property Owners impacted by realignment alternatives

## Public Meeting

*April 27 to May 12, 2023*

**338** Participants (*In-person & Online*)

**60** Comments (*In-person, Online, Email*)



# Public Outreach & Feedback

14

## Common Themes



Existing Congestion  
& Traffic Concerns



Opposition for Roundabouts  
& Raised Medians



Signal Needed at  
Stillhouse Lake Road



Safety Concerns



Property Impacts  
& Amount of ROW Needed



Concern About Project  
Timeline

# Public Outreach & Feedback

15

## Benefits of Raised Medians

- ❑ Improve traffic flow by providing dedicated left-turn lanes at high volume intersections
- ❑ Enhance safety by reducing potential crash points
- ❑ Raised medians have shown to reduce crashes by up to 53% nationally (American Society of Civil Engineers)
- ❑ Can provide a refuge for pedestrians

## Benefits of Roundabouts

- ❑ Reduce the number and severity of crashes
- ❑ Reduce delay/time spent at intersections
- ❑ Reduce air pollution and increase fuel savings
- ❑ Lower cost long-term
- ❑ Improved aesthetics

# Public Outreach & Feedback

16

Partner Coordination Meeting

*June 22, 2023*

- ❑ **Alignment B – Angled Alignment**  
*between Chaparral High School and E. Trimmier Rd.*
  - ❑ City of Killeen & Bell County Agree
- ❑ **Alignment C – North Option**  
*between Rosewood Drive and FM 3481 (Stillhouse Lake Rd.)*
  - ❑ All partners agree





# Next Steps

17

## Anticipated Schedule

