



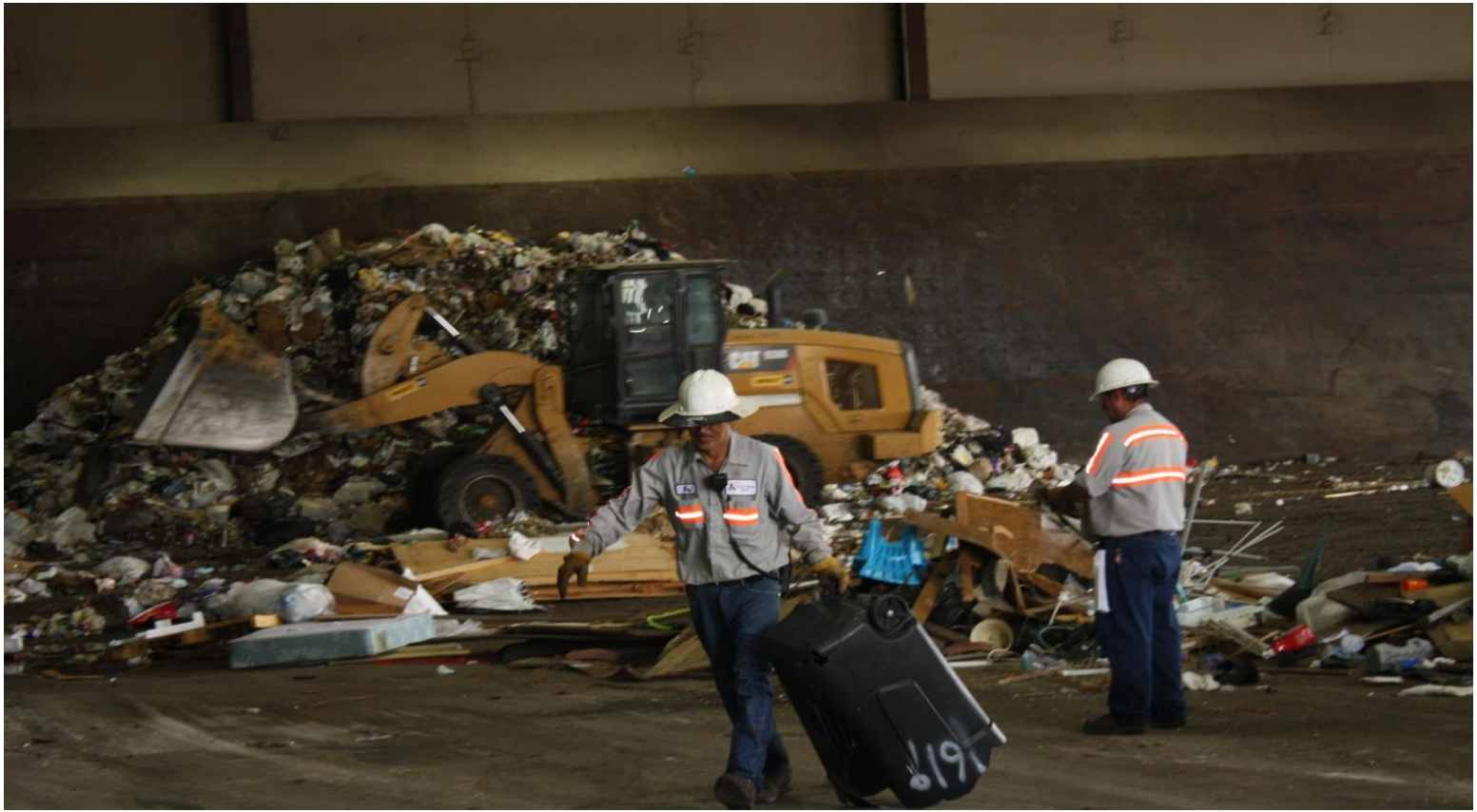
# BID NO. 19-09 TRANSFER STATION CRANE REPLACEMENT

RS-19-009

January 22, 2019

# Background

- Stationary cranes are a vital piece of equipment for Transfer Station Operations.
- The stationary grapple crane currently used at the transfer station was purchased in March 2007 and is no longer manufactured. There were two (2) Apprentice cranes in use at the transfer station beginning in 2007; the main apprentice crane was replaced in FY 14/15.
- Repairs have been made to the current Apprentice crane by utilizing parts from the one that has already been replaced. However, there are no longer any salvageable parts left.
- One bid was received from Four Seasons Equipment, LLC in the amount of \$243,675.
- Funding is available in the FY 19 Budget in the amount of \$246,000.



### 3

## Tipping Floor

The tipping floor at the Transfer Station is where Solid Waste drivers and citizens from Killeen; as well as surrounding areas, drop off the municipal waste. From that point workers separate what can and cannot go to the landfill; then prepare the waste for transport.



# 4

## Transportation of MSW

Stationary cranes are used at the Transfer Station to fill each trailer to the maximum weight allowed, which assists in lower transportation cost. Between FY14 and FY18 over 500,000 tons of waste have been processed through the Transfer Station.

# Alternatives/Recommendation

5

## □ Alternatives

### ▣ Do not replace existing crane.

- Leads to excessive waste on the tipping floor and inefficient truck loading.

### ▣ Authorize the purchase of Bultrite Model 2100 crane from Four Seasons Equipment, LLC.

## □ Recommendation

- ▣ City staff recommends that the City Council authorize the City Manager or his designee to execute a contract for the procurement of a replacement crane from Four Seasons Equipment, LLC and the City Manager or designee is further authorized to execute any change orders in compliance with state law and city policy.