



COVID 19 UPDATE

DS-21-139

November 2, 2021

Killeen Employee Impacts

2

Quarantined: 4

Positive Test: 4

Awaiting Results: 0

Exposures: 0

Department	# Out	Department	# Out	Department	# Out
KPD	0	Finance	0	Community Develop.	0
KFD	0	Comms/Legal/CMO	0	Planning & Develop.	1
Public Works	0	Recreation	0	Aviation	0
HR	0	Courts	0	IT	3

Trauma Service Area L Hospitalizations

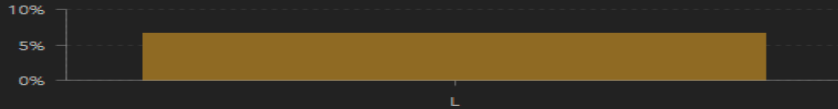
Use TSA Selector on left to narrow TSA selection

Lab Confirmed COVID-19 Patients Currently in Texas Hospitals:

3,333

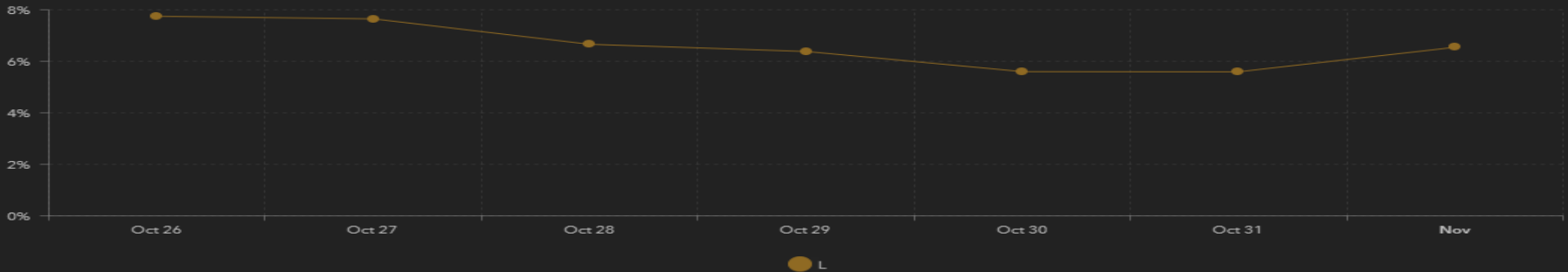
Monday, November 1, 2021

COVID Hospitalizations out of Total Hospital Capacity (Percent) by TSA
(Use date selector on left to change date)

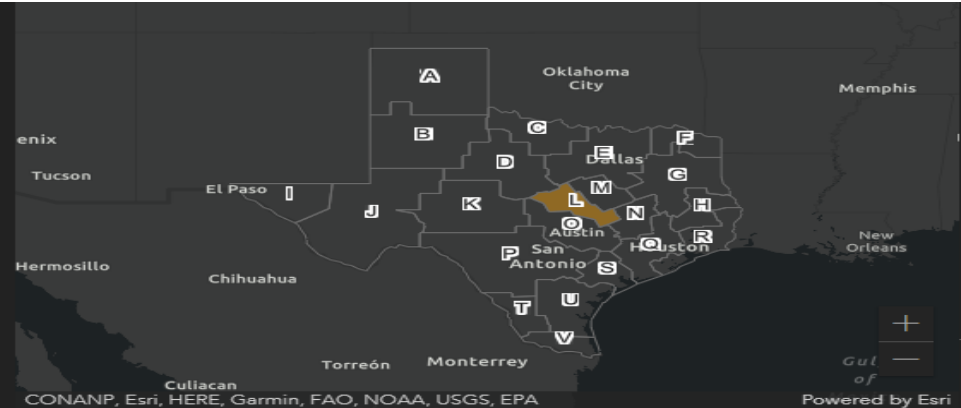


Selected TSA values for selected date in alphabetical order by TSA; hovering over each bar will identify which TSA it represents

COVID Hospitalizations out of Total Hospital Capacity (Percent) by TSA Over the Previous 7 Days



Selected TSA values reflected in graph; hovering over data points on lines will identify which TSA each line represents (graph legend also identifies TSA line colors)

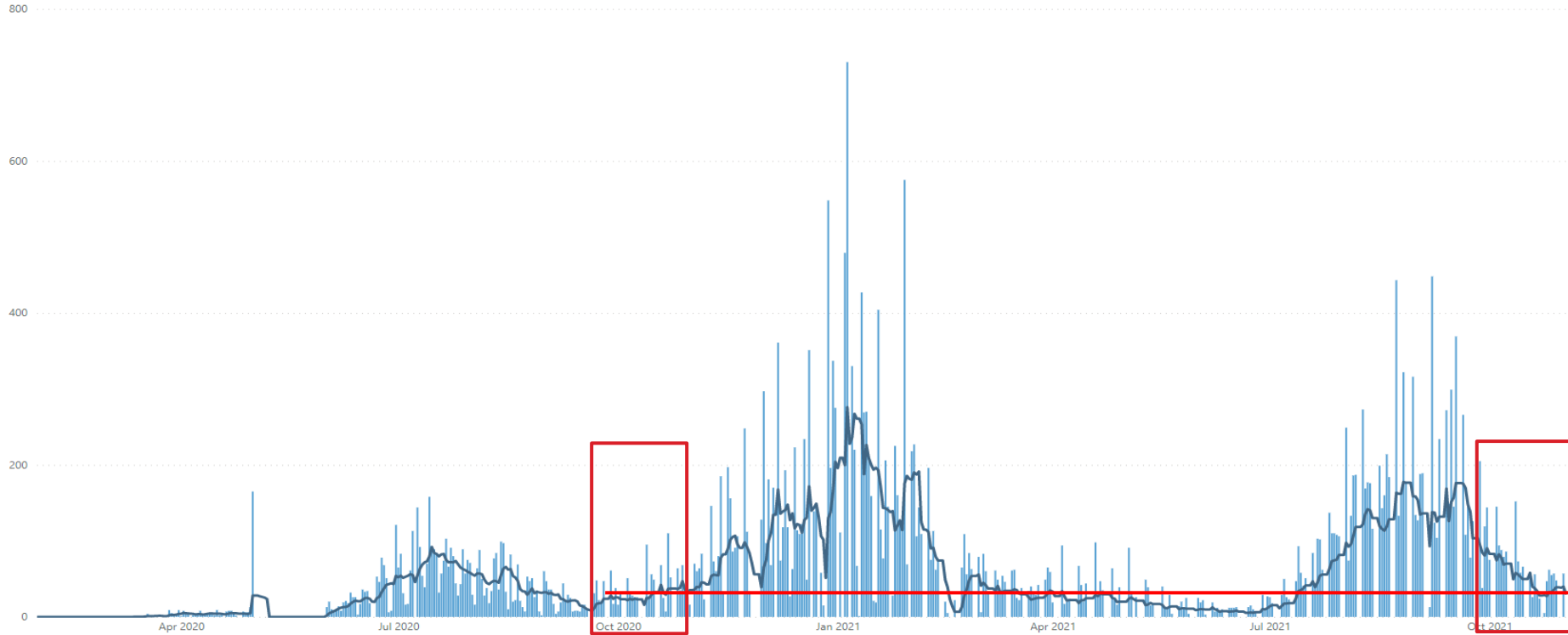


7 Day Average Active Cases

4

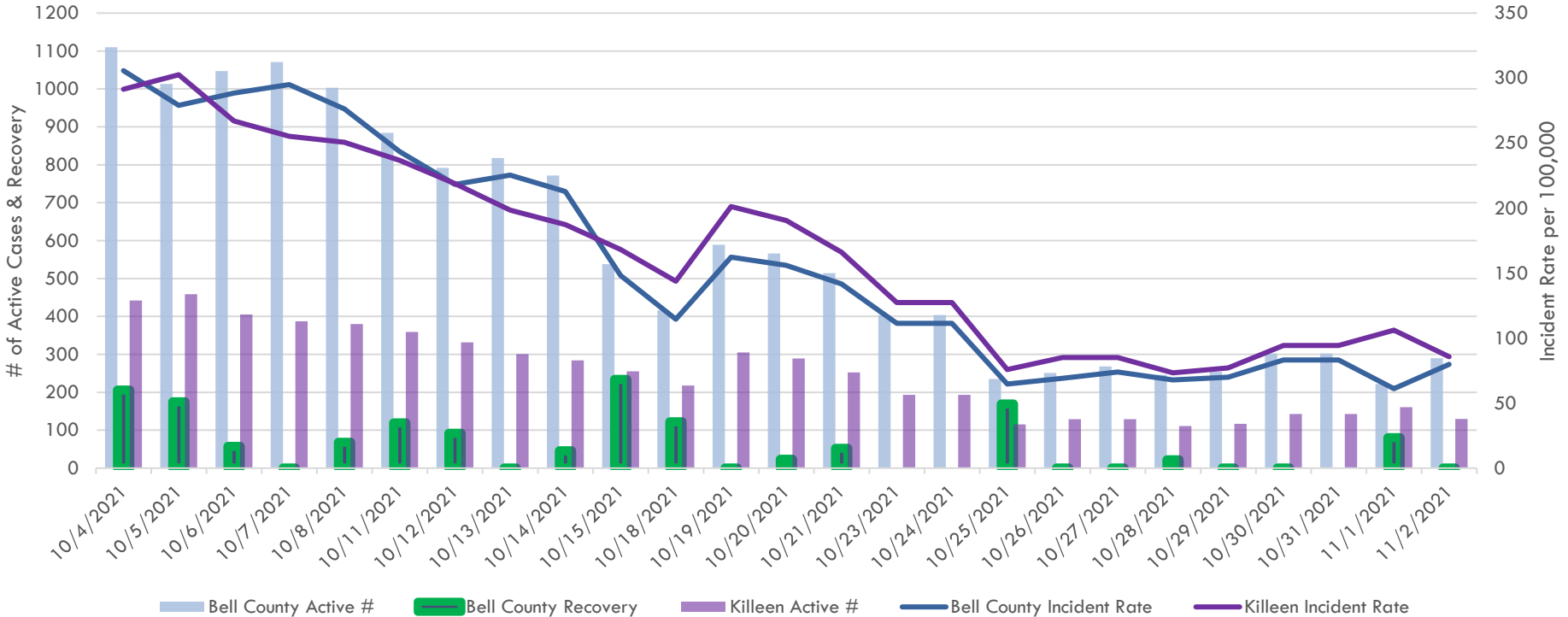
< Back to report | NUMBER OF NEW CASES BY DAY WITH 7-DAY ROLLING AVERAGE

● Number of Cases ● 7-Day Average



Bell County Active Cases

Bell County Case Counts



Vaccine Statistics

6

TEXAS

- 1 DOSE = 73.94%
- FULL DOSE = 64.36%
- 65+ 1 DOSE = 89.59%
- 65+ FULL DOSE = 81.06%

Does not include any DoD administered shots

BELL COUNTY

- 1 DOSE = 53.30%
- FULL DOSE = 46.02%
- 65+ 1 DOSE = 80.93%
- 65+ FULL DOSE = 73.57%

Does not include Fort Hood or VA numbers

As of 11/2/2021

City Actions

7

- Partnering with the State to operate a dual testing/vaccine drive thru center
 - ▣ Killeen Special Events Center, 3301 S WS Young Drive
 - ▣ 9 a.m. to 7 p.m. on days below
 - ▣ NO APPOINTMENT, but need a phone # and/or email

- **Wednesday, November 3rd**

- **Thursday, November 4th**