



PLAYSCAPE REPLACEMENT AT STEWART PARK

RS-22-085

June 21, 2022

Background

2

- ❑ City Council has allocated \$600,000 of American Rescue Plan Act Funding towards Stewart Park
 - ▣ 9.4 acre neighborhood park
- ❑ Existing playscape was installed in 1994 and recently removed by staff due to safety concerns
 - ▣ Playground equipment should be updated every 8-10 years
- ❑ Heartland Play quoted \$293,470 for two (2) play units
 - ▣ Member of Tx Buyboard Purchasing Cooperative
 - ▣ Staff received several quotes from other playground vendors
- ❑ The recommendation to replace this playground aligns with the Parks Master Plan

Background

3



Legend

-  Killeen City Limits
-  Park Boundary
-  Streets

STEWART PARK

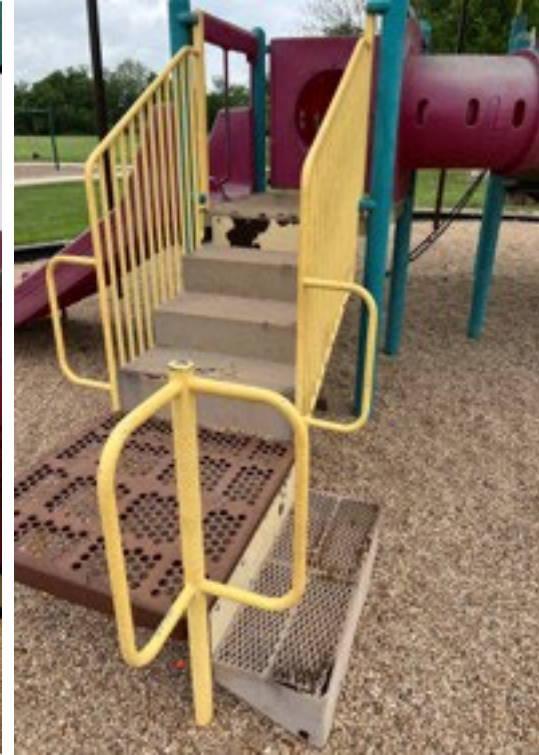
0 60 120 240
Feet



Date: 5/10/2022

Existing Playscape

4





5

Proposed Playscapes

Includes PIP surface, shade structures, benches, concrete corner patios, trash receptacle, and installation.

Large playscape for ages 5-12; small playscape for ages 2-5.

Alternatives

6

- The City Council has (2) alternatives:
 - ▣ Option 1 - Do not approve the purchase and installation of replacement playscapes for Stewart Park
 - ▣ Option 2 - Approve the purchase of replacement playscapes and installation for Stewart Park

Recommendation

7

Approve the purchase of the new playscape at Stewart Park from Heartland Play in the amount of \$293,470 in FY22 and that the City Manager or designee be authorized to execute any change orders as permitted by state and local law