



LARGE TRUCK PARKING IN RESIDENTIAL AREAS

OR-18-005

April 3, 2018

Truck Parking

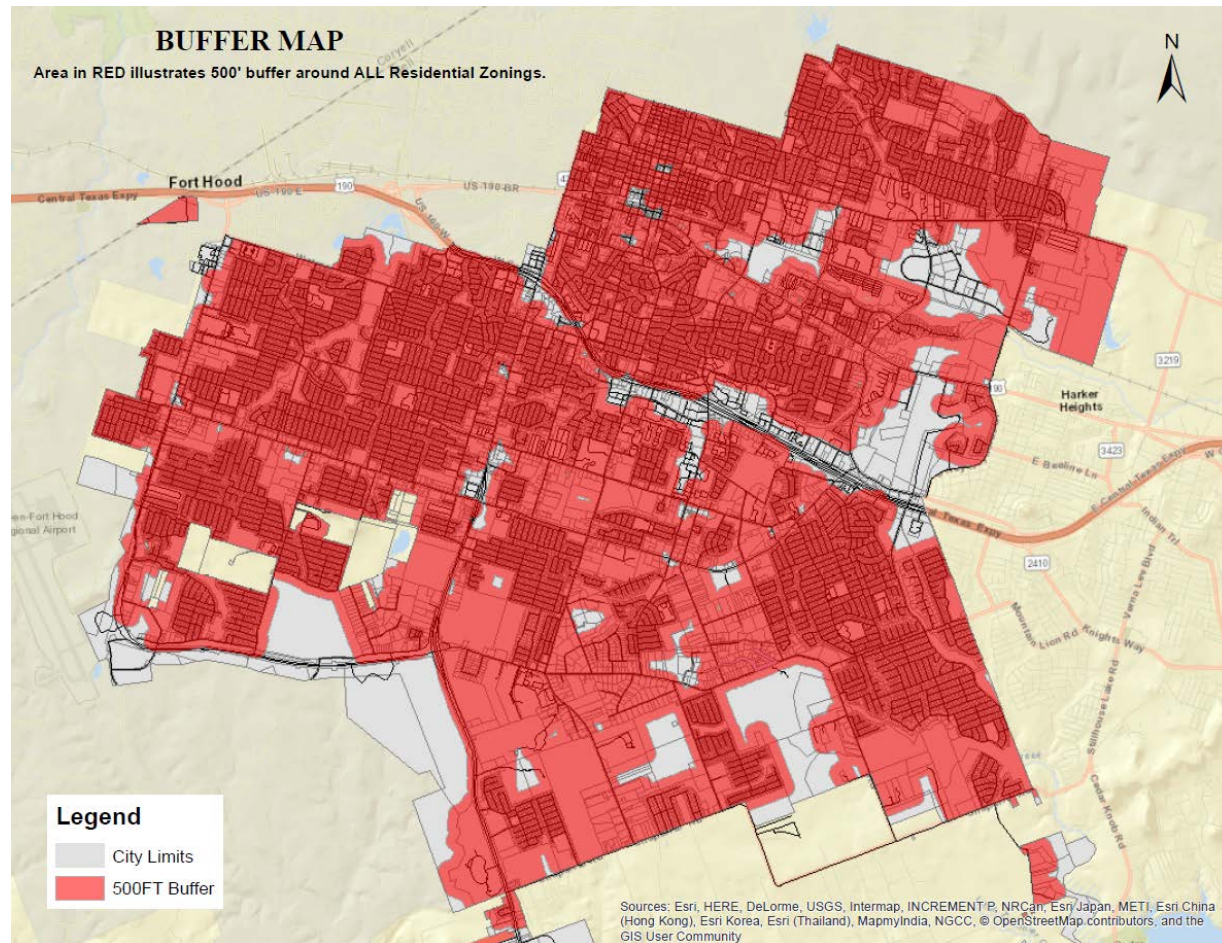
2

- ❑ Section 28-132 *Parking in residential areas* addresses truck and trailer parking in areas including the area *adjacent* to zoned residential areas.
- ❑ City staff reviewed options defining the restriction of parking trucks over one ton to 200, 300, 500 and 1000 feet within a zoned residential area.



3

Truck parking adjacent to residential areas
Driving Safety and Noise Abatement



4

Residential Buffer Map

Area in red illustrates 500' buffer around all Residential Zonings.

Recommendation

5

- ❑ After due consideration of traffic safety, noise abatement and reasonableness, the distance of 500 feet is recommended.
- ❑ Staff recommends Council approve the ordinance Chapter 28, Article V., Sec 28-132: *Parking in residential areas* as revised.