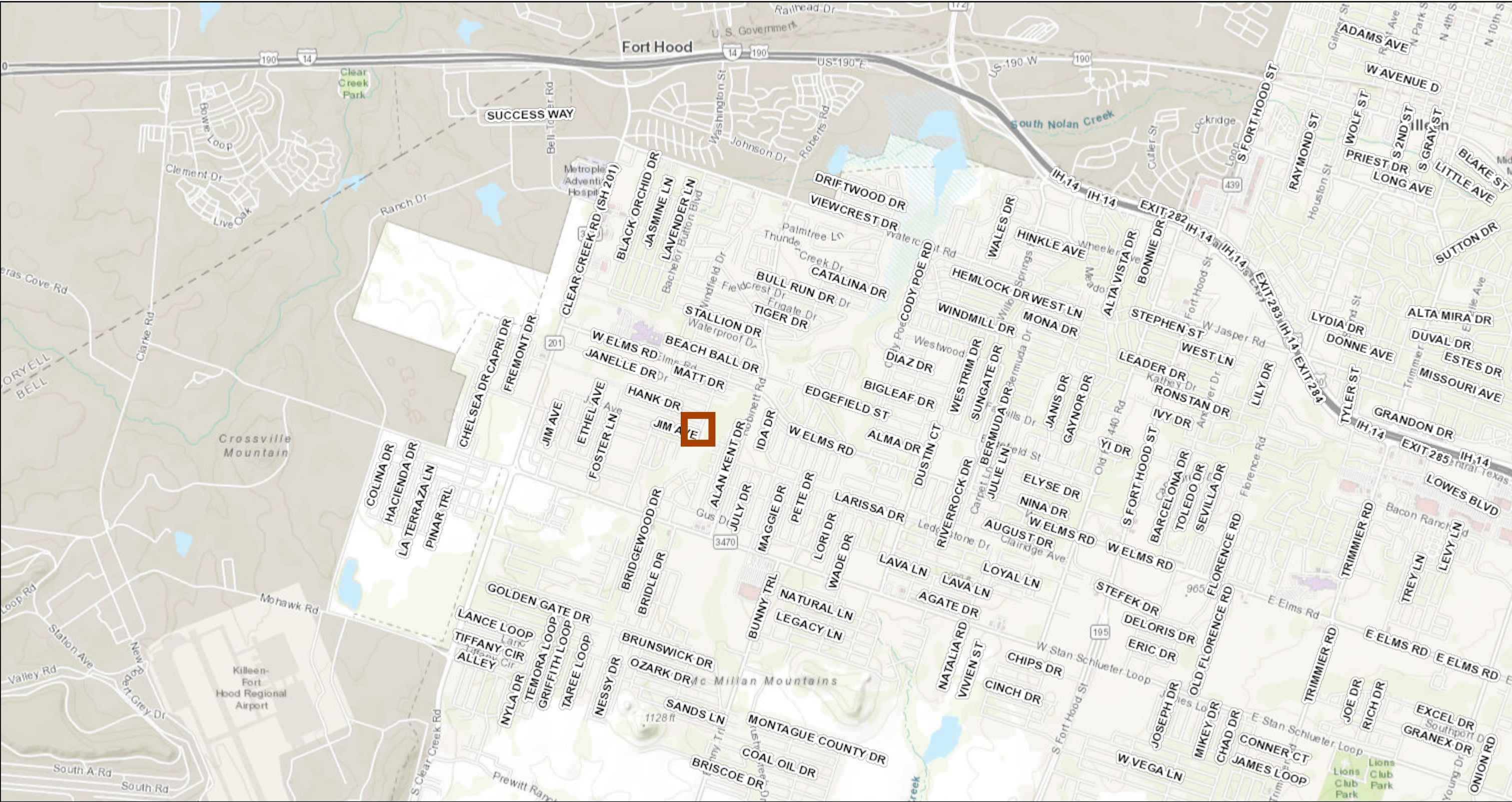


Proposed Land Sale

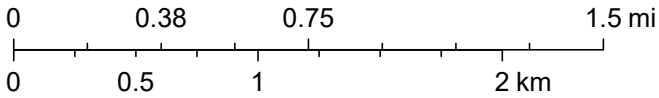


1/3/2024, 4:50:10 PM

StreetNames

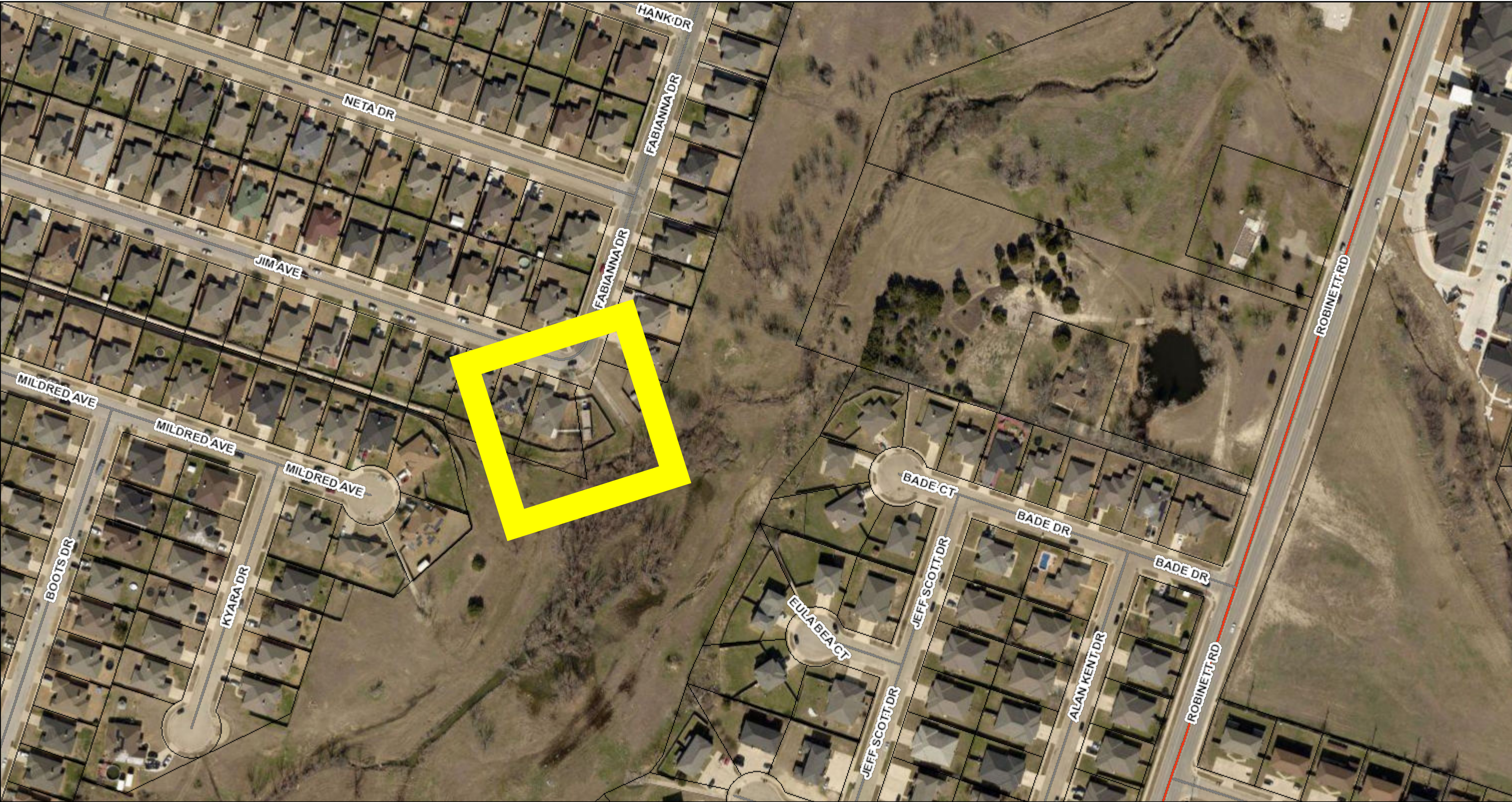
 Location

1:36,112

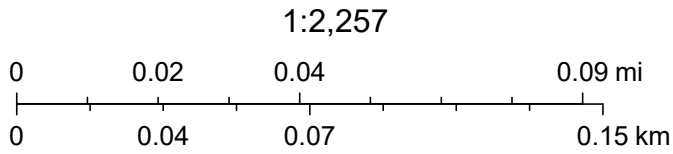


Texas Parks & Wildlife, Esri, HERE, Garmin, INCREMENT P, USGS, METI/NASA, EPA, USDA

Proposed Land Sale



1/3/2024, 4:52:15 PM



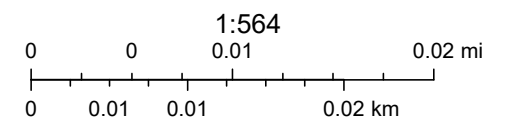
Texas Parks & Wildlife, Esri, HERE, Garmin, INCREMENT P, USGS, EPA, USDA

Proposed Land Sale



1/3/2024, 5:00:24 PM

 Parcels

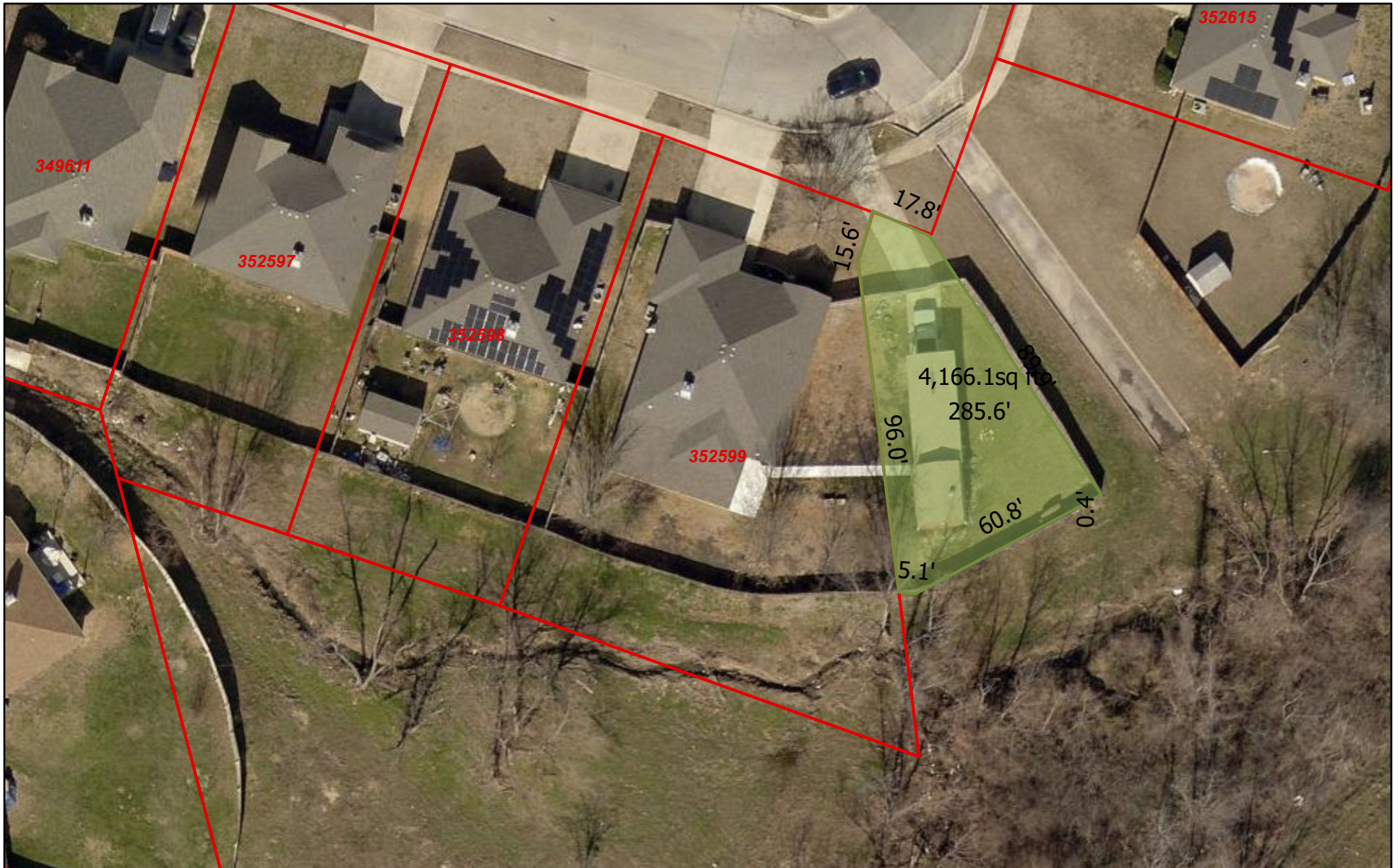


© OpenStreetMap (and) contributors, CC-BY-SA

Bell County Appraisal District, BIS Consulting - www.bisconsulting.com

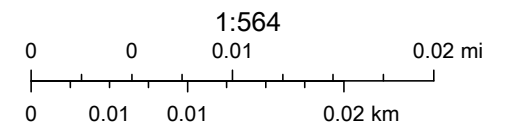
This product is for informational purposes only and has not been prepared for or be suitable for legal, engineering, or surveying purposes. It does not represent an on-the-ground survey and represents only the approximate relative location of boundaries.

Proposed Land Sale



8/29/2023, 10:28:07 AM

 Parcels



© OpenStreetMap (and) contributors, CC-BY-SA

Bell County Appraisal District, BIS Consulting - www.bisconsulting.com

This product is for informational purposes only and has not been prepared for or be suitable for legal, engineering, or surveying purposes. It does not represent an on-the-ground survey and represents only the approximate relative location of boundaries.