



THOROUGHFARE PLAN AMENDMENTS

PH-25-008

February 18, 2025

Background

- The City's Thoroughfare Plan establishes the transportation network for the City of Killeen and establishes a framework for the orderly development of roadways, including alignments, connections, and transportation linkages. As new development occurs, it becomes necessary to update the Thoroughfare Plan accordingly.

Background

3

- Staff is recommending updates to the existing Thoroughfare Plan. After reviewing the current 2022 Thoroughfare Plan, the staff finds that these amendments are necessary to align with recent residential and commercial developments and account for topography.

Legend

CLASSIFICATION

- MINOR ARTERIAL
- - MINOR ARTERIAL PROPOSED
- COLLECTOR
- - COLLECTOR PROPOSED
- RESIDENTIAL COLLECTOR
- - RESIDENTIAL COLLECTOR PROPOSED
- LOCAL STREET

Thoroughfare Plan Amendments

5

□ **Area 1:**

- ▣ Reclassify Black Orchid Drive from a Marginal Access to a Local Street; and
- ▣ Eliminate the future connection between Black Orchid Drive and Folly Drive.

Area 1



Thoroughfare Plan Amendments

7

□ **Area 2:**

Reclassify Pauline Drive and Gilbert Drive from a Collector to a Residential Collector.

Area 2

EXISTING THOROUGHFARE PLAN



PROPOSED THOROUGHFARE PLAN



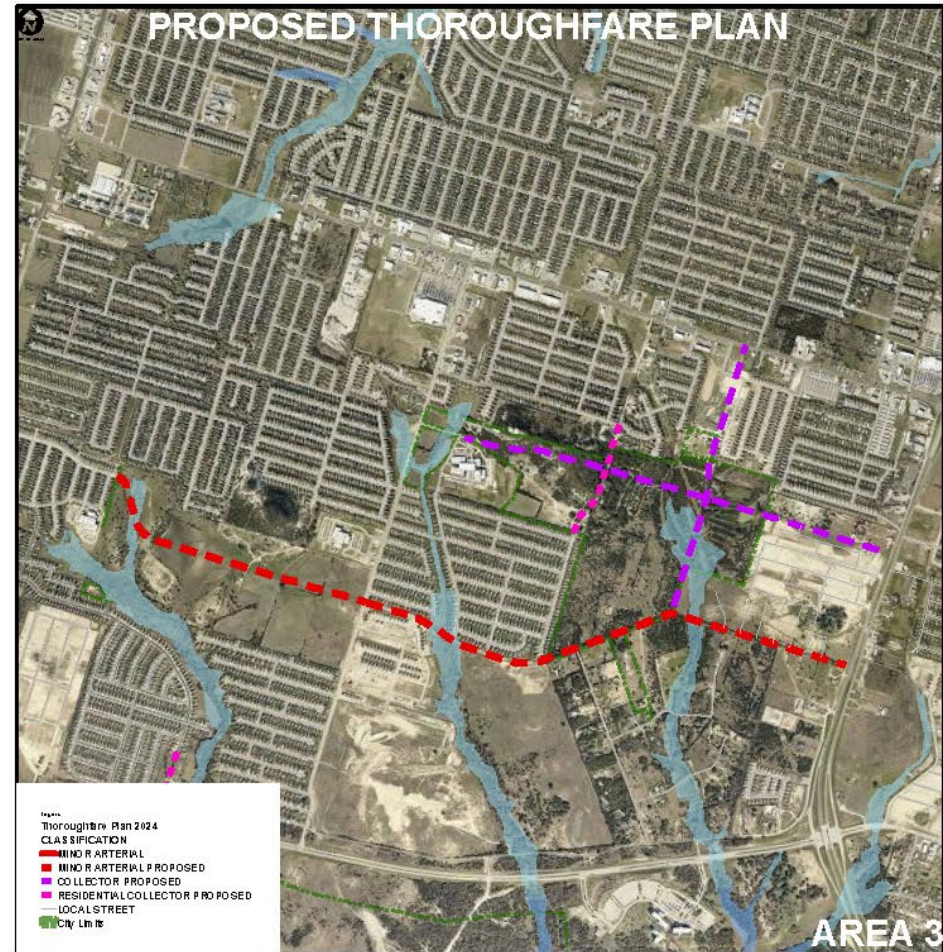
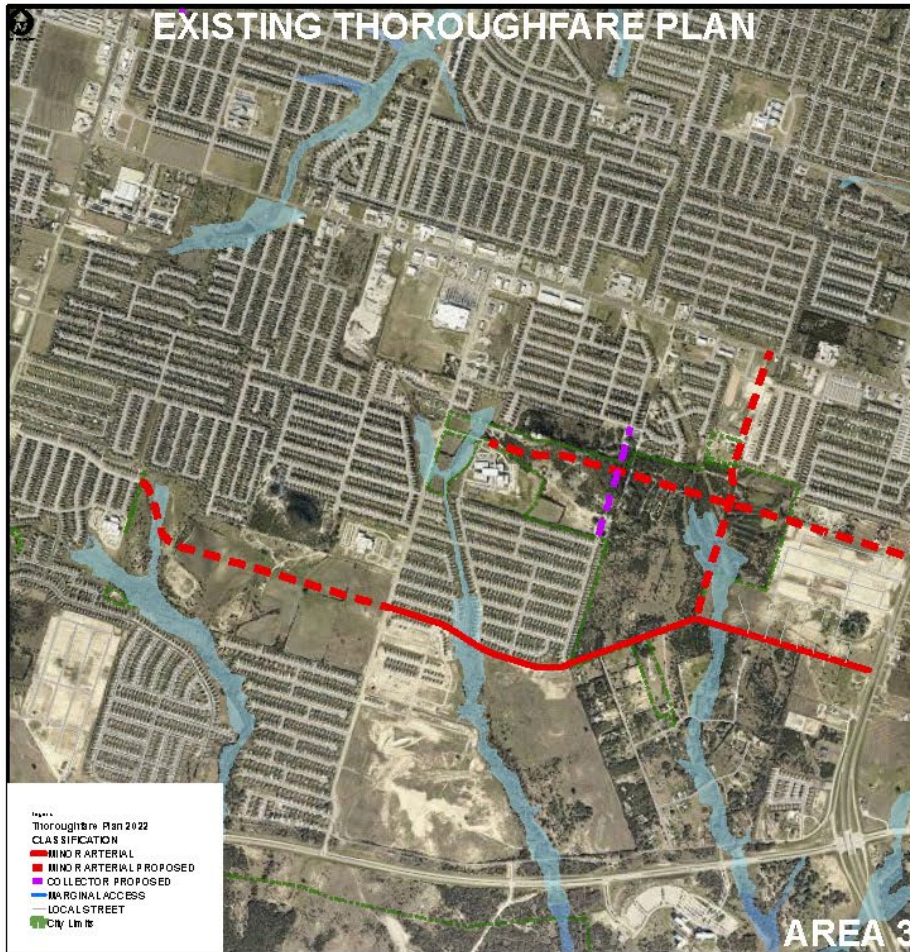
Thoroughfare Plan Amendments

9

□ **Area 3:**

- Reclassify the future east/west connection to Briar Patch Lane from a Minor Arterial to a Collector;
- Reclassify the future north/south connection from Generations Drive to Castle Gap from a Collector to a Residential Collector; and
- Change the designation of Mohawk from Minor Arterial to Proposed Minor Arterial.

Area 3



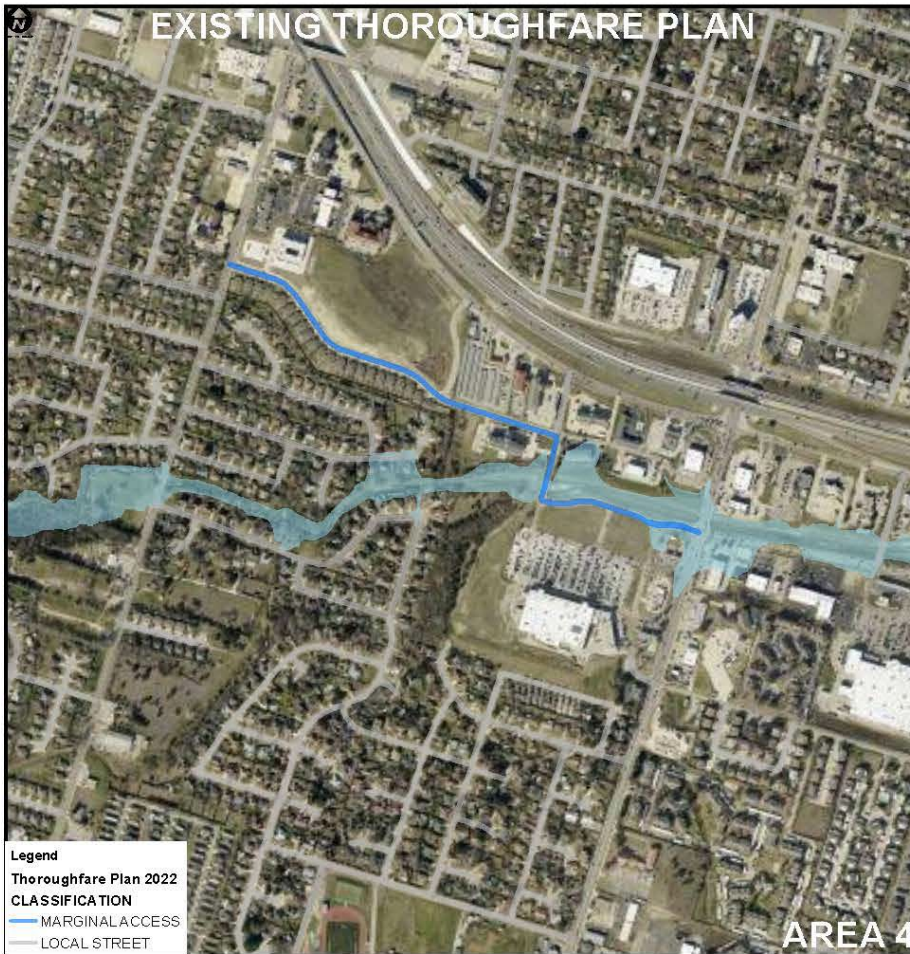
Thoroughfare Plan Amendments

11

□ **Area 4:**

Reclassify Lowes Boulevard west of Trimmier Road from
Marginal Access to Local Street.

Area 4



Thoroughfare Plan Amendments

13

□ **Area 5:**

Remove the proposed east/west extension of Atkinson Avenue (Proposed Collector) to Ricky Carlisle Circle through the Killeen Business Park.

Area 5



Thoroughfare Plan Amendments

15

□ **Area 6:**

Remove the Proposed Collector connecting East Central Texas Expressway to East Stan Schlueter Loop.

Area 6

EXISTING THOROUGHFARE PLAN



PROPOSED THOROUGHFARE PLAN



Thoroughfare Plan Amendments

17

□ **Area 7:**

- Reclassify the east/west connection to Malmaison Road from a Proposed Arterial to a Proposed Collector;
- Eliminate the proposed east/west connection to Shawlands Drive (Proposed Collector);
- Realign the Proposed north/south connection (Future Collector) between Stagecoach Road and the Proposed east/west Minor Arterial to account for topography;

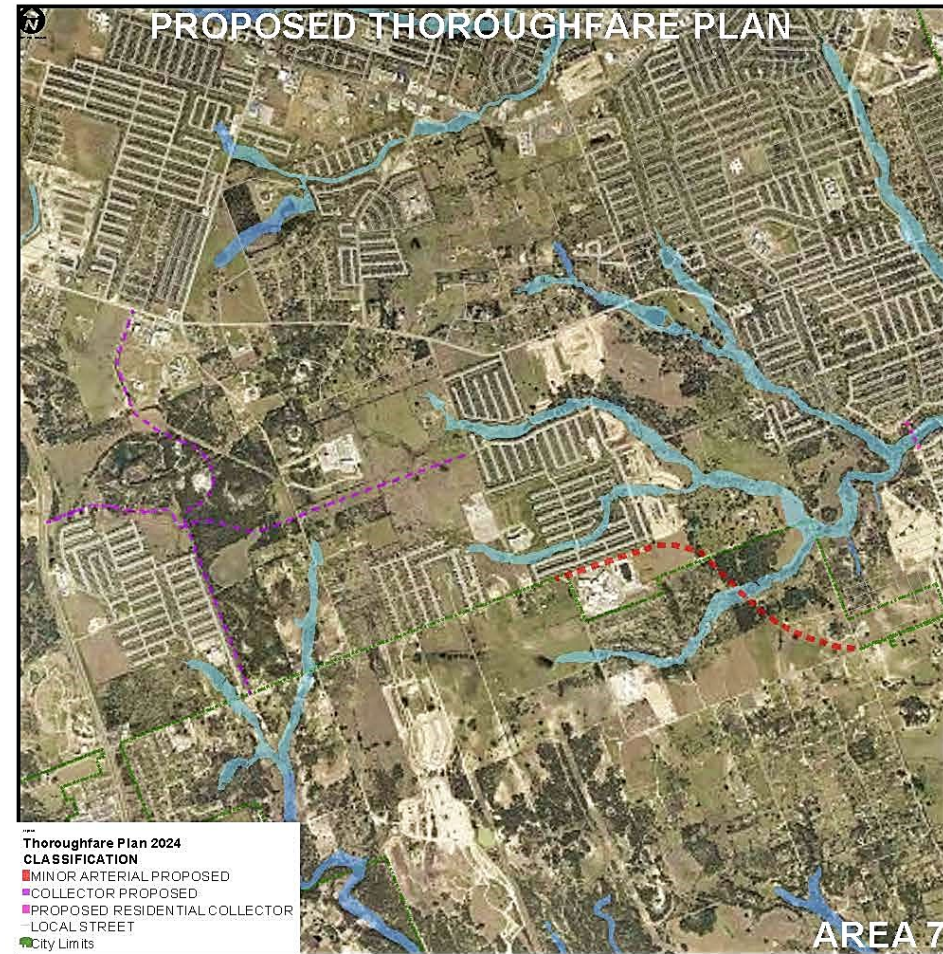
Thoroughfare Plan Amendments

18

□ **Area 7:**

- Eliminate the Proposed north/south and east/west Collectors from The Preserve at Thousand Oaks;
- Eliminate the Proposed north/south and east/west Collectors southeast of Yowell Ranch; and
- Realign Chaparral Road to account for the proposed design of the roadway.

Area 7



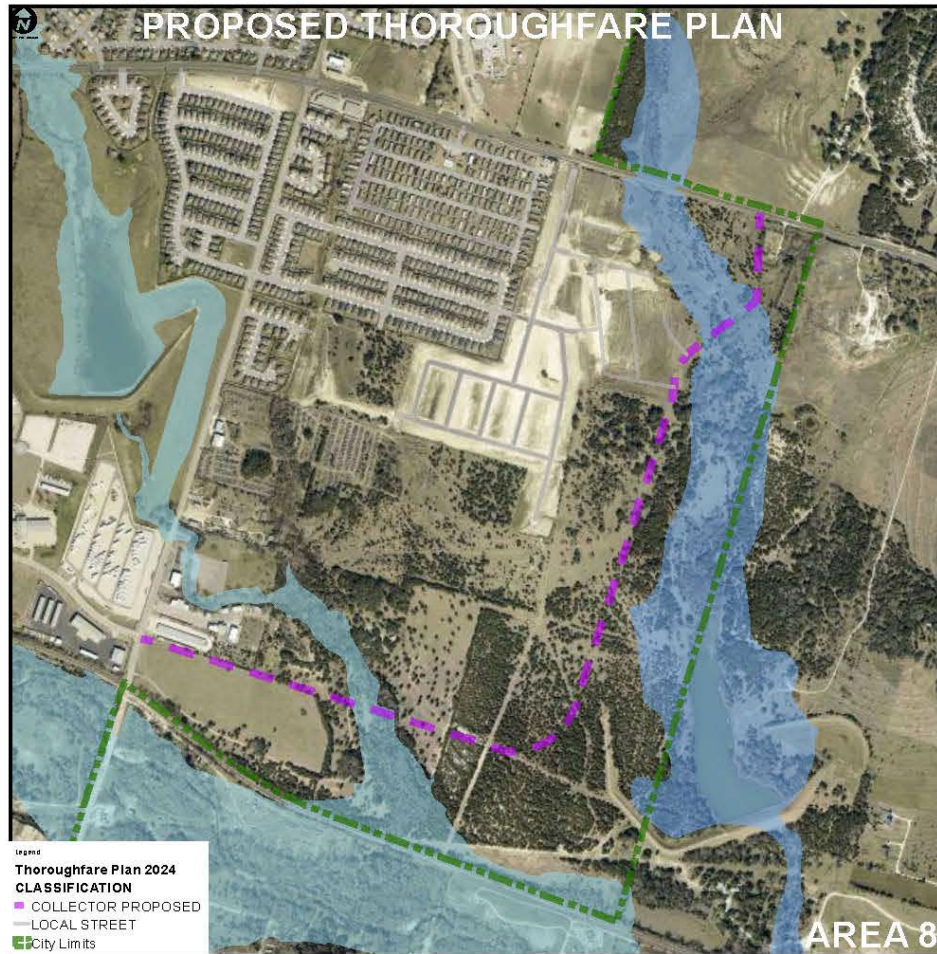
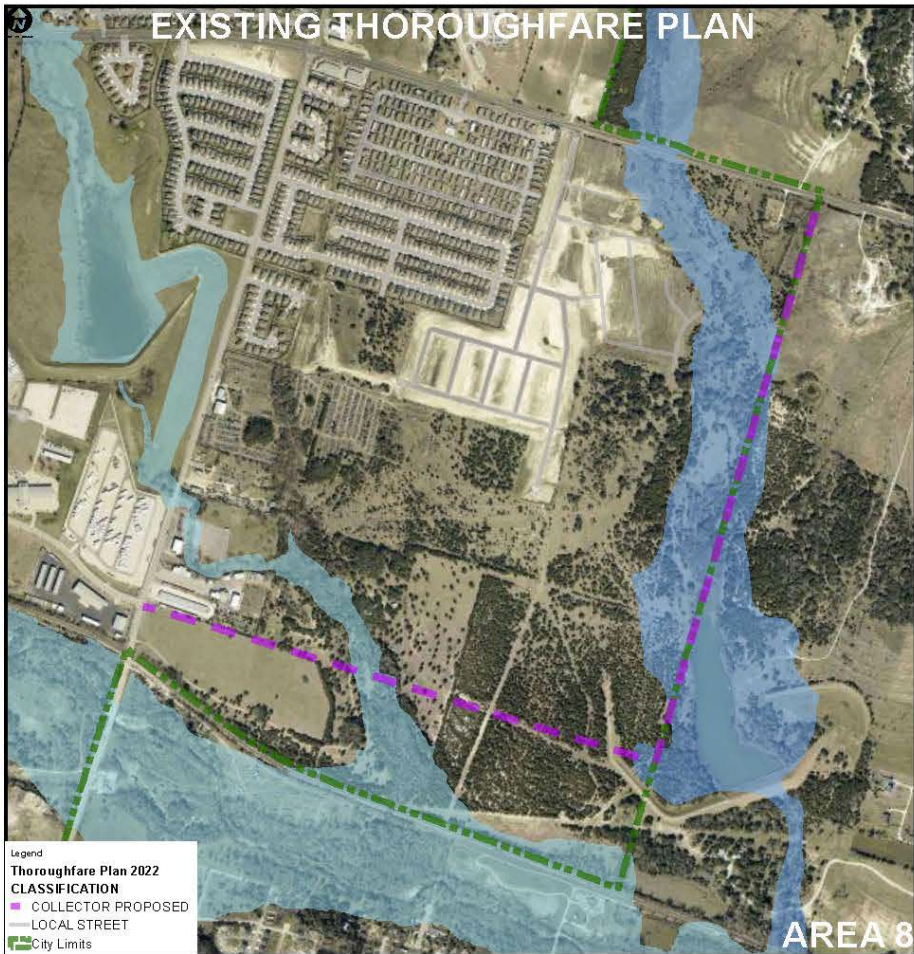
Thoroughfare Plan Amendments

20

□ **Area 8:**

Realign the Proposed Collector to align with the approved Preliminary Plat of Reynolds Crossing and minimize impacts to the floodplain.

Area 8



Staff Recommendation

22

- Staff finds that the proposed amendments are necessary to align with recent residential and commercial developments and account for topography.

Commission Recommendation

23

- At their regular meeting on January 13, 2025, the Planning and Zoning Commission recommended approval of the proposed amendments to the Thoroughfare Plan by a vote of 6 to 0.