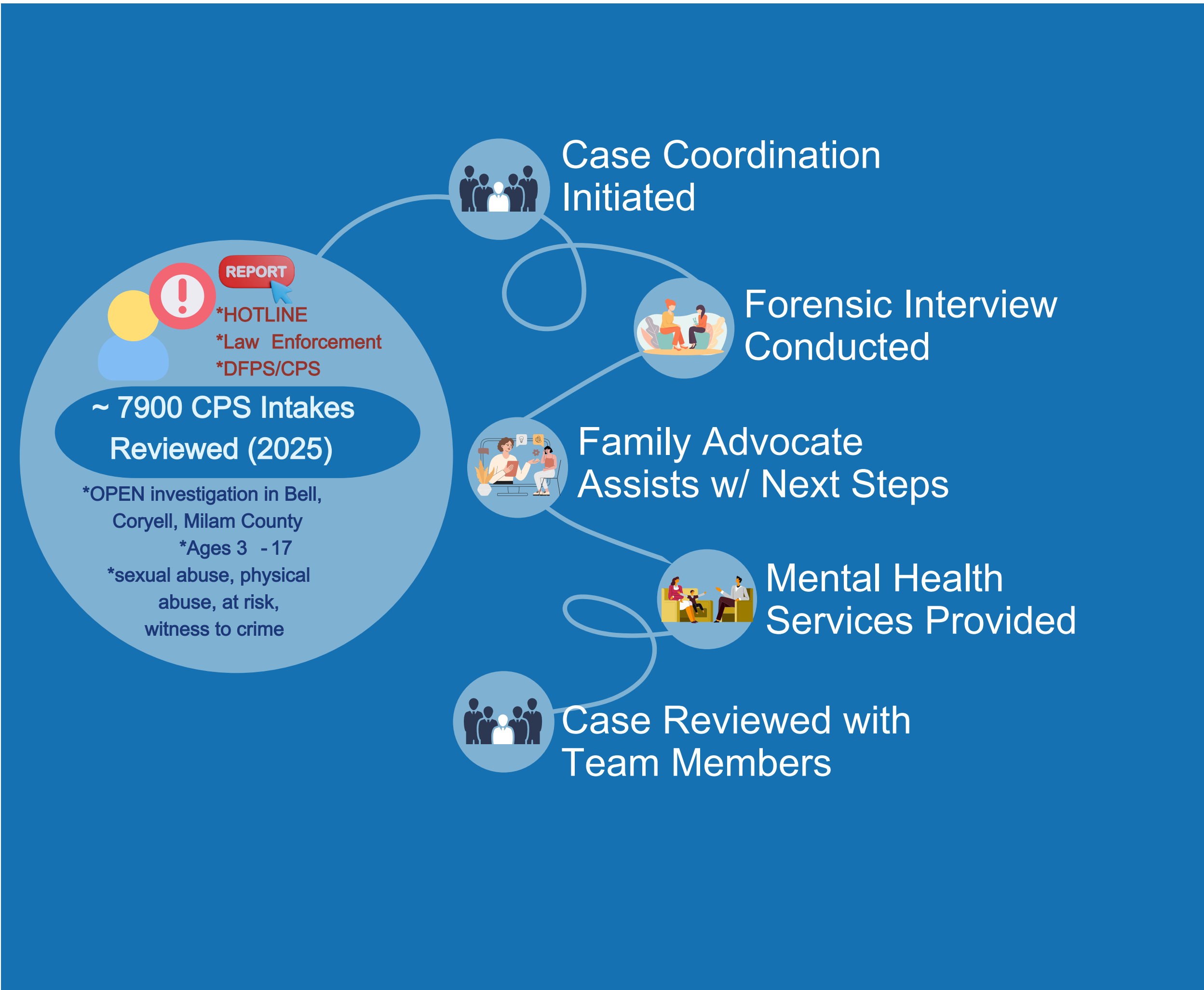


Mission

Provide and promote hope, healing, and justice to abused children.

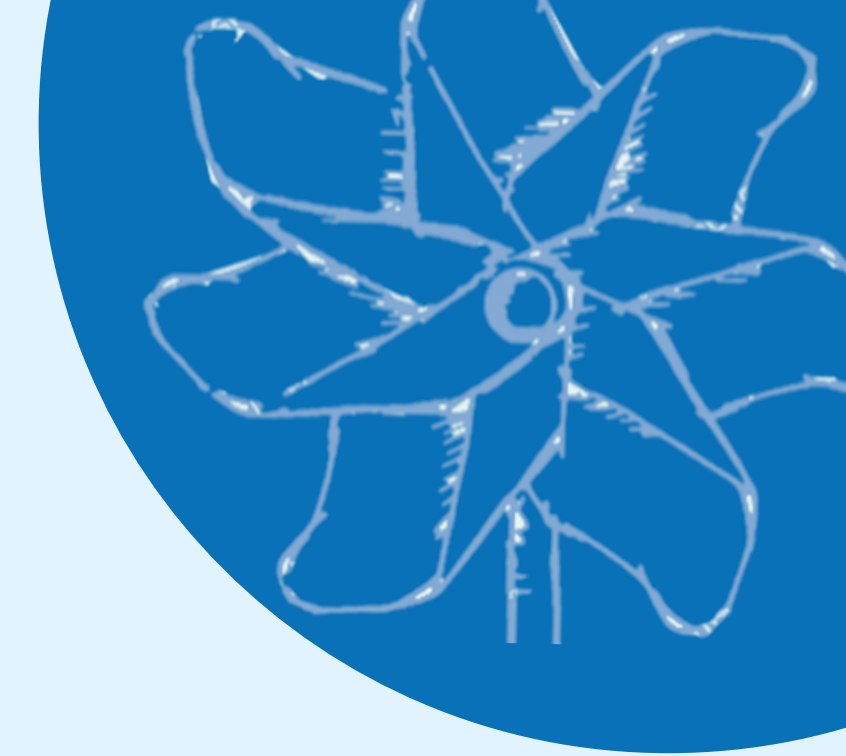
Vision

Every child grows and develops in a healthy environment free from abuse.

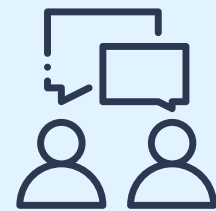




2025 COMMUNITY



1,058 CHILDREN SERVED **THROUGH** **10,180** SERVICES



Forensic Interviews
747

Fact-finding interviews conducted by a trained professional and designed to minimize the number of times a child must tell their story.



Medical Examinations
265

Specialized medical assessments and treatment to child abuse victims. Provided by Baylor Scott & White McLane Children's Pediatric Forensic Medicine Program.



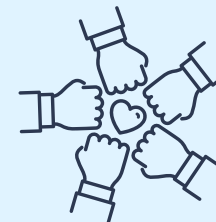
Family Advocacy Services
2,634

Offers child victims and non-offending caregivers the support, education, and resources needed to overcome the trauma of abuse.



Mental Health Sessions
3,156

Evidence-based, trauma-informed interventions that allow child victims the chance to heal from abuse.



Case Coordination Services
2,690

A multi-disciplinary team (MDT) approach to investigations of child abuse ensures that the well-being of the child is the utmost importance.



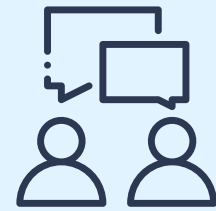
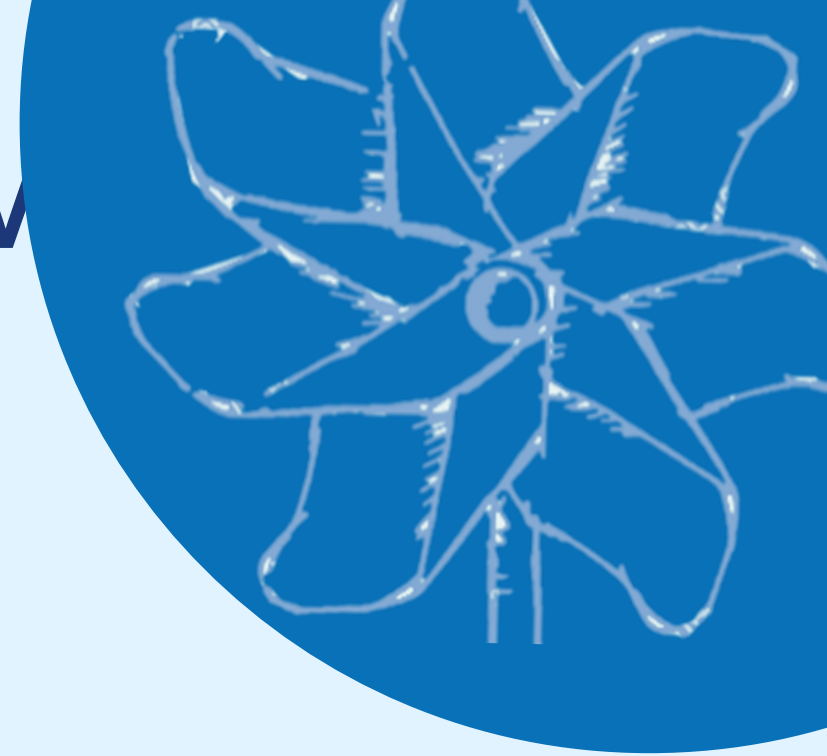
Intake Reviews
7,900

Reviewing DFPS Statewide Intakes to assess all reports of abuse to coordinate appropriate referrals for services.



CITY OF KILLEEN IMPACT

APRIL 1, 2025 - MARCH 31, 2026



Forensic Interviews
211

Fact-finding interviews conducted by a trained professional and designed to minimize the number of times a child must tell their story.



Medical Examinations
81

Specialized medical assessments and treatment to child abuse victims. Provided by Baylor Scott & White McLane Children's Pediatric Forensic Medicine Program.



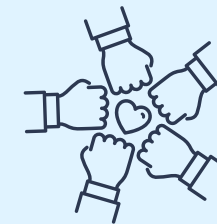
Family Advocacy Services
1213

Offers child victims and non-offending caregivers the support, education, and resources needed to overcome the trauma of abuse.



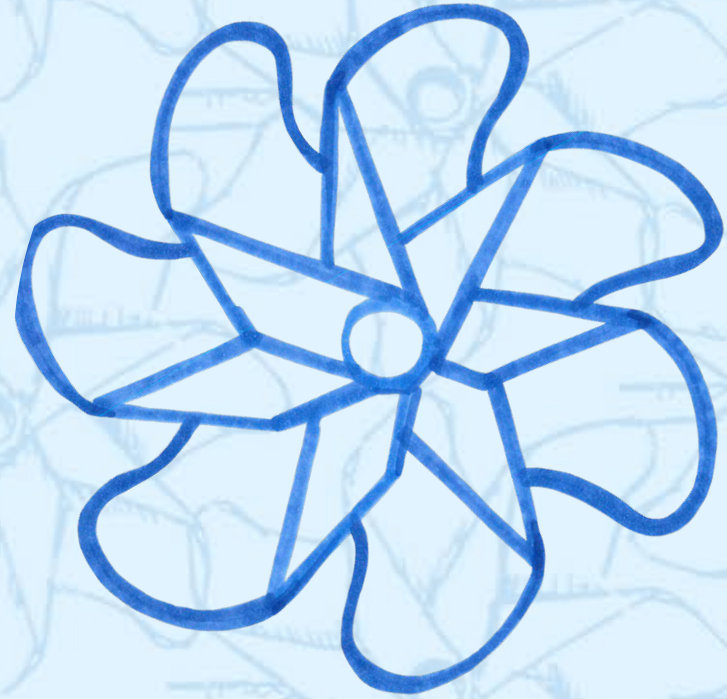
Mental Health Sessions
994

Evidence-based, trauma-informed interventions that allow child victims the chance to heal from abuse.

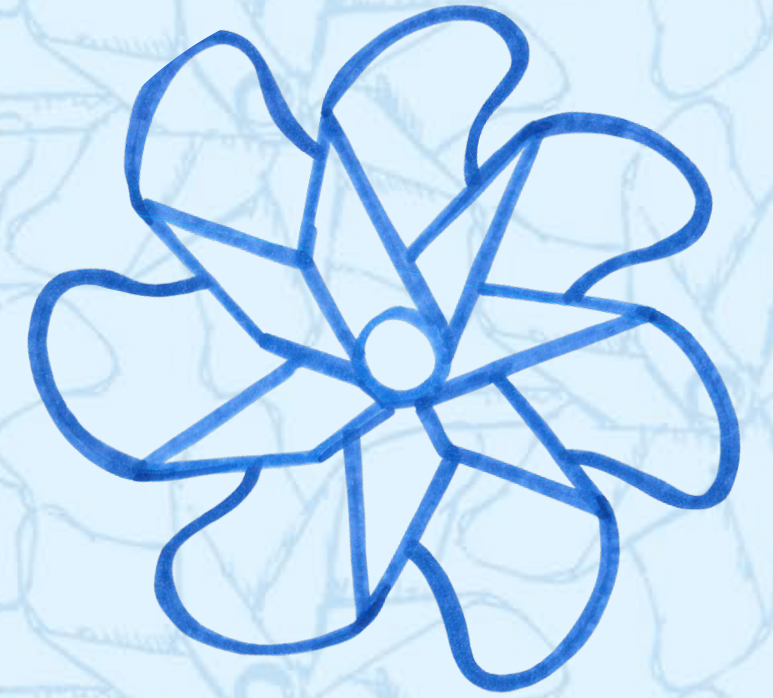


Case Coordination Services
605

A multi-disciplinary team (MDT) approach to investigations of child abuse ensures that the well-being of the child is the utmost importance.



ENHANCING SERVICES IN KILLEEN



FISCAL YEAR 2026	FISCAL YEAR 2027
ADDED ONE DAY OF THERAPY SERVICES AT GOODWILL OFFICE	MENTAL HEALTH SERVICES 4 5 DAYS A WEEK
ADDITIONAL TRAINING FOR LAW ENFORCEMENT AND DEPARTMENT OF FAMILY AND PROTECTIVE SERVICES	PROBLEMATIC SEXUAL BEHAVIOR THERAPY ADOLESCENTS
INCREASED SERVICES TO MILITARY FAMILIES	THERAPY SERVICES IN KISD SCHOOLS

F A C T : Killeen Residents = MOST clients served in our 3 counties.

The Ask: **City of Killeen** give **\$.35/person**

A total request of **\$58,100** for a population of 166,000.

ESTIMATED
COST
\$1000/case

Estimated **523** cases
equals
TOTAL
ESTIMATED COST
\$523,000

MENTAL HEALTH
Estimated Cost
\$150/session

We provide
994 sessions to
Killeen Residents
TOTAL
Estimated Cost
\$149,100

Savings to TAXPAYERS
\$614,000

COST to CHILDREN Without:

* NO child -friendly
setting

* NO child -friendly
Interviewers

* NO Mental Health
Services

* *LIMITED*
COORDINATION with:

- *DAs Office*
- *Medical/SANE services*
- *Other Agencies*