

INDEX OF SHEETS

GENERAL
C001 - TITLE
C002 - INDEX OF SHEETS
OVERALL LAYOUTS
C003 - PROJECT LAYOUT & CONTROL ROSEWOOD DR.
C004 - PROJECT LAYOUT & CONTROL HERITAGE OAKS SEG 3
C005 - PROJECT LAYOUT & CONTROL HERITAGE OAKS SEG 4
TYPICAL SECTIONS
C006 - ROSEWOOD DR TYPICAL SECTIONS
C007 - ROSEWOOD DR TYPICAL SECTIONS
C008 - HERITAGE OAKS SEG 3 TYPICAL SECTIONS
C009 - HERITAGE OAKS SEG 4 TYPICAL SECTIONS
GENERAL NOTES
C010 - GENERAL NOTES
C011 - GENERAL NOTES
C012 - GENERAL NOTES
C013 - GENERAL NOTES
C014 - GENERAL NOTES
C015 - GENERAL NOTES
C016 - GENERAL NOTES
C017 - GENERAL NOTES
C018 - GENERAL NOTES
C019 - GENERAL NOTES
C020 - GENERAL NOTES
C021 - GENERAL NOTES
C022 - GENERAL NOTES
C023 - GENERAL NOTES
EROSION CONTROL PLANS-ROSEWOOD EXT.
C105 - ROSEWOOD DR. EROSION CONTROL PLAN (STA. 10+00-20+00)
C106 - ROSEWOOD DR. EROSION CONTROL PLAN (STA. 20+00-30+00)
C107 - ROSEWOOD DR. EROSION CONTROL PLAN (STA. 30+00-40+00)
C108 - ROSEWOOD DR. EROSION CONTROL PLAN (STA. 40+00-END)
EROSION CONTROL PLANS-HERITAGE OAKS SEG #3
C100 - SEGMENT 3 EROSION CONTROL PLAN (STA 10+00-20+00)
C101 - SEGMENT 3 EROSION CONTROL PLAN (STA 20+00-30+00)
C102 - SEGMENT 3 EROSION CONTROL PLAN (STA 30+00-40+00)
C103 - SEGMENT 3 EROSION CONTROL PLANS (STA 40+00-END)
C104 - PURSER CONNECTION EROSION CONTROL PLAN
EROSION CONTROL PLANS-HERITAGE OAKS SEG #4
C109 - HERITAGE OAKS SEG 4 EROSION CONTROL PLAN (STA 10+00-20+00)
C110 - HERITAGE OAKS SEG 4 EROSION CONTROL PLAN (STA 20+00-30+00)
C111 - HERITAGE OAKS SEG 4 EROSION CONTROL PLAN (STA 30+00-40+00)
C112 - HERITAGE OAKS SEG 4 EROSION CONTROL PLAN (STA 40+00-50+00)
C113 - HERITAGE OAKS SEG 4 EROSION CONTROL PLAN (STA 50+00-60+00)
C114 - HERITAGE OAKS SEG 4 EROSION CONTROL PLAN (STA 60+00-70+00)
C115 - HERITAGE OAKS SEG 4 EROSION CONTROL PLAN (STA 70+00-80+00)
C116 - SEG 4 CONNECTION 1 EROSION CONTROL PLAN (STA 10+00-20+00)
C117 - SEG 4 CONNECTION 2 EROSION CONTROL PLAN (STA 10+00-END)
C118 - SEG 4 CONNECTION 3 EROSION CONTROL PLAN (STA 10+00-END)
C120 - EC(1)-16
C121 - EC(2)-16
C122 - EC(3)-16
C123 - EC(4)-16
C124 - EC(5)-16
C125 - EC(6)-16
C126 - EC(7)-16
C127 - EC(8)-16
C128 - EC(9)-16
C129 - EC(9)-16
C130 - EC(9)-16
C131 - EPIC
C132 - SW3P
TRAFFIC CONTROL PLANS
C134 - ROSEWOOD DR TRAFFIC CONTROL PLAN
TRAFFIC CONTROL STANDARD DETAIL
C135 - TOP(1)-12
C136 - TOP(2-4)-12
ROSEWOOD ROADWAY PLAN & PROFILES
C200 - ROSEWOOD DRIVE PLAN & PROFILE (STA. 10+00-15+00)
C201 - ROSEWOOD DRIVE PLAN & PROFILE (STA. 15+00-20+00)
C202 - ROSEWOOD DRIVE PLAN & PROFILE (STA. 20+00-25+00)
C203 - ROSEWOOD DRIVE PLAN & PROFILE (STA. 25+00-30+00)
C204 - ROSEWOOD DRIVE PLAN & PROFILE (STA. 30+00-35+00)
C205 - ROSEWOOD DRIVE PLAN & PROFILE (STA. 35+00-40+00)
C206 - ROSEWOOD DRIVE PLAN & PROFILE (STA. 40+00-END)
C207 - CHAPARRAL ROAD ACCELERATION LANE
HERITAGE OAKS (SEGMENT #3)- PLAN & PROFILES
C208 - HERITAGE OAKS SEGMENT 3 PLAN & PROFILE (STA 10+00-15+00)
C209 - HERITAGE OAKS SEGMENT 3 PLAN & PROFILE (STA 15+00-20+00)
C210 - HERITAGE OAKS SEGMENT 3 PLAN & PROFILE (STA 20+00-25+00)
C211 - HERITAGE OAKS SEGMENT 3 PLAN & PROFILE (STA 25+00-30+00)
C212 - HERITAGE OAKS SEGMENT 3 PLAN & PROFILE (STA 30+00-35+00)
C213 - HERITAGE OAKS SEGMENT 3 PLAN & PROFILE (STA 35+00-40+00)
C214 - HERITAGE OAKS SEGMENT 3 PLAN & PROFILE (STA 40+00-45+00)
C215 - HERITAGE OAKS SEGMENT 3 PLAN & PROFILE (STA 45+00-END)
PURSER CONNECTION (SEGMENT #3)
C216 - PURSER CONNECTION PLAN & PROFILE (STA 10+00-15+00)
C217 - PURSER CONNECTION PLAN & PROFILE (STA 15+00-END)
HERITAGE OAKS (SEGMENT #4)- PLAN & PROFILES
C218 - HERITAGE OAKS SEGMENT 4 PLAN & PROFILE (STA 10+00-15+00)
C219 - HERITAGE OAKS SEGMENT 4 PLAN & PROFILE (STA 15+00-20+00)
C220 - HERITAGE OAKS SEGMENT 4 PLAN & PROFILE (STA 20+00-25+00)
C221 - HERITAGE OAKS SEGMENT 4 PLAN & PROFILE (STA 25+00-30+00)
C222 - HERITAGE OAKS SEGMENT 4 PLAN & PROFILE (STA 30+00-35+00)
C223 - HERITAGE OAKS SEGMENT 4 PLAN & PROFILE (STA 35+00-40+00)
C224 - HERITAGE OAKS SEGMENT 4 PLAN & PROFILE (STA 40+00-45+00)
C225 - HERITAGE OAKS SEGMENT 4 PLAN & PROFILE (STA 45+00-50+00)
C226 - HERITAGE OAKS SEGMENT 4 PLAN & PROFILE (STA 50+00-55+00)
C227 - HERITAGE OAKS SEGMENT 4 PLAN & PROFILE (STA 55+00-60+00)
C228 - HERITAGE OAKS SEGMENT 4 PLAN & PROFILE (STA 60+00-65+00)
C229 - HERITAGE OAKS SEGMENT 4 PLAN & PROFILE (STA 65+00-70+00)
C230 - HERITAGE OAKS SEGMENT 4 PLAN & PROFILE (STA 70+00-75+00)
C231 - HERITAGE OAKS SEGMENT 4 PLAN & PROFILE (STA 75+00-80+00)

INDEX OF SHEETS CONT'D

HERITAGE OAKS (SEGMENT #4) CONNECTION 1 - PLAN & PROFILES
C232 - SEG. 4 CONNECTION 1 PLAN & PROFILE (STA 10+00-15+00)
C233 - SEG. 4 CONNECTION 1 PLAN & PROFILE (STA 15+00-20+00)
C234 - SEG. 4 CONNECTION 1 PLAN & PROFILE (STA 20+00-END)
HERITAGE OAKS (SEGMENT #4) CONNECTION 2 - PLAN & PROFILE
C235 - SEG. 4 CONNECTION 2 PLAN & PROFILE (STA 10+00-END)
HERITAGE OAKS (SEGMENT #4) CONNECTION 3 - PLAN & PROFILES
C236 - SEG. 4 CONNECTION 3 PLAN (STA 10+00-END)
C237 - SEG. 4 CONNECTION 3 PROFILE (STA 10+00-END)
HERITAGE OAKS (SEGMENT #4) CONNECTION 4 - PLAN & PROFILES
C238 - SEG. 4 CONNECTION 4 PLAN & PROFILE (STA 10+00-END)
HERITAGE OAKS (SEGMENT #4) CONNECTION 5 - PLAN & PROFILES
C239 - SEG. 4 CONNECTION 5 PLAN & PROFILE (STA 10+00-END)
PYRITE TRAILHEAD AND PYRITE DRIVE PLAN & PROFILE
C240 - SEG. 4 PYRITE TRAILHEAD
C242 - PYRITE DRIVE PLAN & PROFILE
C245 - FLUME CROSSING DETAILS
ROADWAY DETAILS
C243 - FLUME CROSSING DETAILS
C244 - FLUME CROSSING DETAILS
C245 - CITY OF KILLEEN DETAILS
C247 - CITY OF KILLEEN DETAILS
C248 - PED 12A
C249 - PED 12A
C250 - PED 12A
C251 - PED 12A
C252 - PEDESTRIAN RAIL DETAILS
C253 - PEDESTRIAN RAIL DETAILS
C254 - BC(1)-14
C255 - BC(2)-14
C256 - BC(3)-14
C257 - BC(4)-14
C258 - BC(5)-14
C259 - BC(6)-14
C260 - BC(7)-14
C261 - BC(8)-14
C262 - BC(9)-14
C263 - BC(10)-14
C264 - BC(11)-14
C265 - BC(12)-14
DRAINAGE
C300 - ROSEWOOD DRIVE DRAINAGE AREA MAP
C300A - HERITAGE OAKS SEG 4 DRAINAGE AREA MAP
C301 - ROSEWOOD DRIVE STORM DRAIN CALCULATIONS
C302 - ROSEWOOD DRIVE STORM DRAIN CALCULATIONS
C303 - HERITAGE OAKS SEG 4 CULVERTS 1-6 CROSSING HYDRAULICS
C304 - HERITAGE OAKS SEG 4 CULVERTS 7 & 8 HYDRAULICS
C305 - HERITAGE OAKS SEG 4 STORM SEWER EXTENSION PLAN & PROFILE
C306 - HERITAGE OAKS SEG 4 CULVERT CROSSING 1 & 2 PLAN & PROFILE
C307 - HERITAGE OAKS SEG 4 CULVERT CROSSING 3 & 4 PLAN & PROFILE
C308 - HERITAGE OAKS SEG 4 CULVERT CROSSING 5 & 6 PLAN & PROFILE
C309 - HERITAGE OAKS SEG 4 CULVERT CROSSING 7 & 8 PLAN & PROFILE
C310 - HERITAGE OAKS SEG 4 LOW WATER CROSSING 1 PLAN & PROFILE
C311 - HERITAGE OAKS SEG 4 LOW WATER CROSSING 2 PLAN & PROFILE
C312 - HERITAGE OAKS SEG 4 LOW WATER CROSSING 3 PLAN & PROFILE
C313 - HERITAGE OAKS SEG 4 LOW WATER CROSSING 4 PLAN & PROFILE
C314 - HERITAGE OAKS SEG 4 LOW WATER CROSSING 5 PLAN & PROFILE
C315 - HERITAGE OAKS SEG 4 LOW WATER CROSSING 6 PLAN & PROFILE
DRAINAGE DETAILS
C316 - SETP-CD
C317 - SETP-CD
C318 - SETP-PD
C319 - PSET-SC
C320 - PSET-RP
C321 - PSET-RC
C322 - PSET-SP
C323 - CULVERT & LOW WATER CROSSING DETAILS
SIGNING & STRIPING LAYOUT PLANS
C400 - ROSEWOOD DR STRIPING PLAN (STA. 10+00-20+00)
C401 - ROSEWOOD DR STRIPING PLAN (STA. 20+00-30+00)
C402 - ROSEWOOD STRIPING PLAN (STA 30+00-40+00)
C403 - ROSEWOOD DR STRIPING PLAN (STA. 40+00-END)
C404 - SEG 3 STRIPING & SIGNAGE PLAN (STA 10+00-20+00)
C405 - SEG 3 STRIPING & SIGNAGE PLAN (STA 20+00-30+00)
C406 - SEG 3 STRIPING & SIGNAGE PLAN (STA 30+00-40+00)
C407 - SEGMENT 3 STRIPING & SIGNAGE PLANS (STA 40+00-END)
SIGNING & STRIPING DETAILS
C408 - PM(1)-12
C409 - PM(2)-12
C410 - PM(3)-12
C411 - SUMMARY OF SMALL SIGNS
C412 - SMD (GEN)-08
C413 - SMD (SLIP-1)-08
C414 - SMD (SLIP-2)-08
C415 - SMD (SLIP-3)-08
C416 - SMD (TWT)-08
C417 - SMD (FRP)-08
LANDSCAPING
L100 - HERITAGE OAKS (SEG #4) LANDSCAPE OVERALL LAYOUT
L101 - HERITAGE OAKS (SEG #4) LANDSCAPE LAYOUTS 1 & 2
L102 - HERITAGE OAKS (SEG #4) LANDSCAPE LAYOUTS 3 & 4
LANDSCAPING DETAILS
L200 - HERITAGE OAKS (SEG #4) LANDSCAPE DETAILS
L201 - HERITAGE OAKS (SEG #4) LANDSCAPE DETAILS
STRUCTURAL
BRIDGE
S-1 - BRIDGE GENERAL NOTES
S-2 - BRIDGE LAYOUT
S-3 - FOUNDATION LAYOUT
S-4 - BRIDGE CROSS SECTION
S-5 - ABUTMENT 1 & 4 PLAN
S-6 - ABUTMENT DETAILS
S-7 - BENT 2 & 3 PLAN
S-8 - FRAMING PLAN
RETAINING WALL
S9 - MSE RETAINING WALL HO4-1, RD-1 PLAN & PROFILE
S10 - MSE RETAINING WALL RD-2 PLAN & PROFILE
S11 - MSE RETAINING WALL HO4-2 PLAN & PROFILE
S12 - MSE RETAINING WALL MISC DETAILS
STRUCTURAL DETAILS
S13 - RW 1(L)A
S14 - RW 2
S15 - RW(MSE)
S16 - RW(MSE)
S17 - RW(TRF)

INDEX OF SHEETS CONT'D

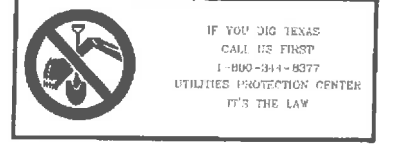
ELECTRICAL PLANS
E-1 - OVERALL SITE PLAN
E-2 - SITE PLAN
E-3 - SITE PLAN
E-4 - SITE PLAN
E-5 - SCHEDULES AND DETAILS
E-6 - PHOTOMETRIC PLAN
E-7 - PHOTOMETRIC PLAN
E-8 - PHOTOMETRIC PLAN
E-9 - ELECTRICAL DETAILS CONDUITS & NOTES ED(1)-14
E-10 - ELECTRICAL DETAILS CONDUCTORS ED(3)-14
E-11 - ELECTRICAL DETAILS GROUND BOXES ED(4)-14
E-12 - ELECTRICAL DETAILS SERVICE NOTES & DATA ED(5)-14
E-13 - ELECTRICAL DETAILS SERVICE ENCLOSURE AND NOTES ED(6)-14
E-14 - ELEC SERVICE SUPPORT PEDESTAL SFRVICE TY PS - ED(9)-14

ISSUED FOR 90% REVIEW AND COMMENT.
For Interim Review Only
These documents are released for the purpose of review and comment under the authority of MKC KRIEDEL #85017
JUNE 1, 2017
They are not to be used for construction purposes.

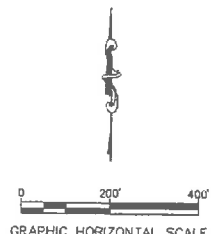
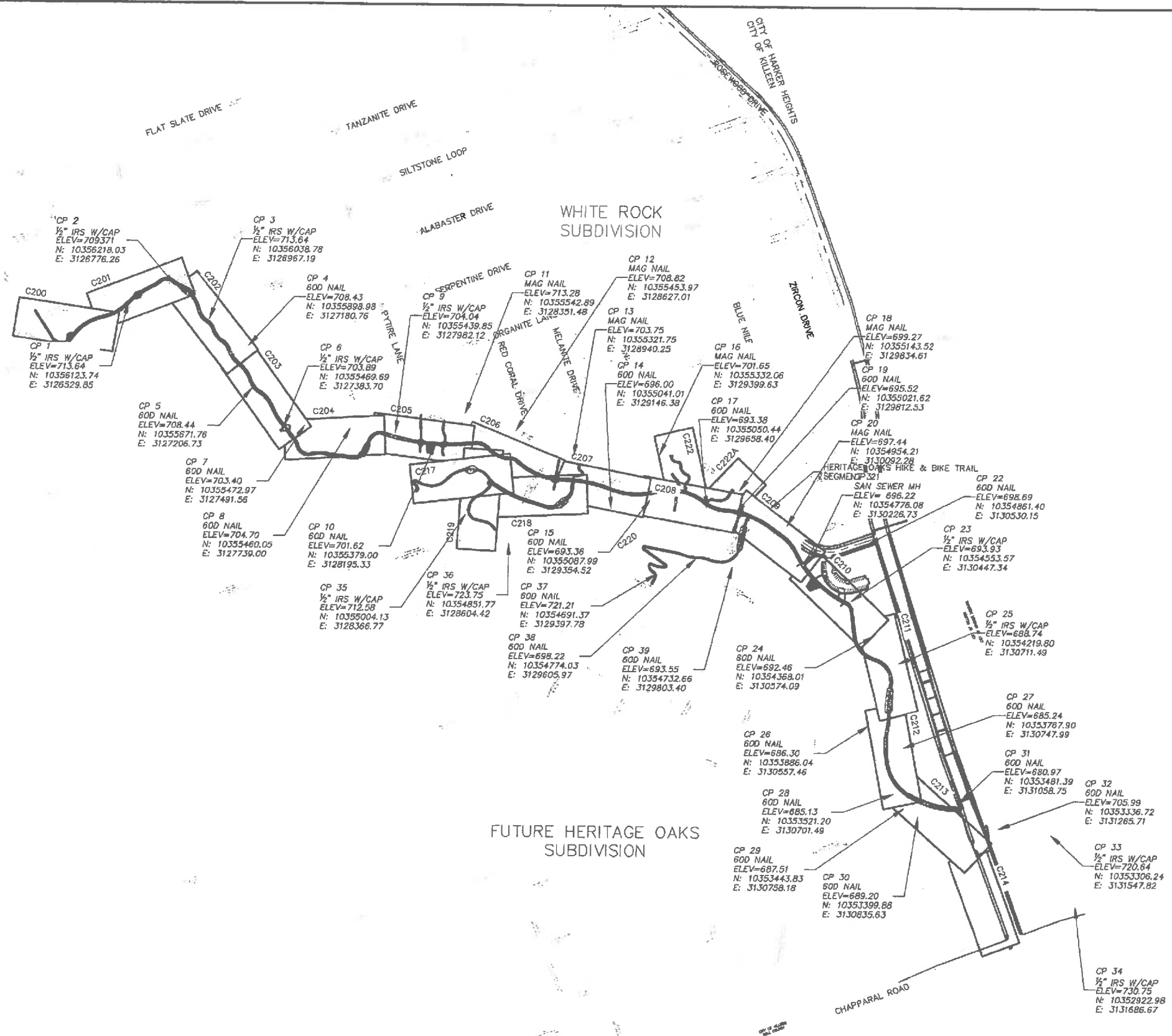
MITCHELL & ASSOCIATES, INC.
ENGINEERING & SURVEYING
102 N. COLLEGE STREET
KILLEEN, TEXAS 76541
PHONE: (254) 634-5541 FAX: (254) 634-2141
TEXAS BOARD OF PROFESSIONAL ENGINEERS FIRM REGISTRATION NO. 5341
T. B. P. L. S. FIRM REGISTRATION NO. 108204-08

CITY OF KILLEEN
ROSEWOOD DRIVE EXTENSION
INDEX OF SHEETS

Table with columns: FED. RD. DIV. NO., PROJECT NO., HIGHWAY NO., STATE, DIST., COUNTY, SHEET NO., TEXAS, WACO, BELL, CONT., SECT., CONT., 0909, 38, 152, ETC., C002



Vertical text on the right edge of the page.



For Interim Review Only
 These documents are released for the purpose of review and comment under the authority of MIKE KRIEDEL #33017
 JUNE 1, 2017
 They are not to be used for construction purposes.

ISSUED FOR 90% REVIEW AND COMMENT.

NO.	DATE	REVISION	BY

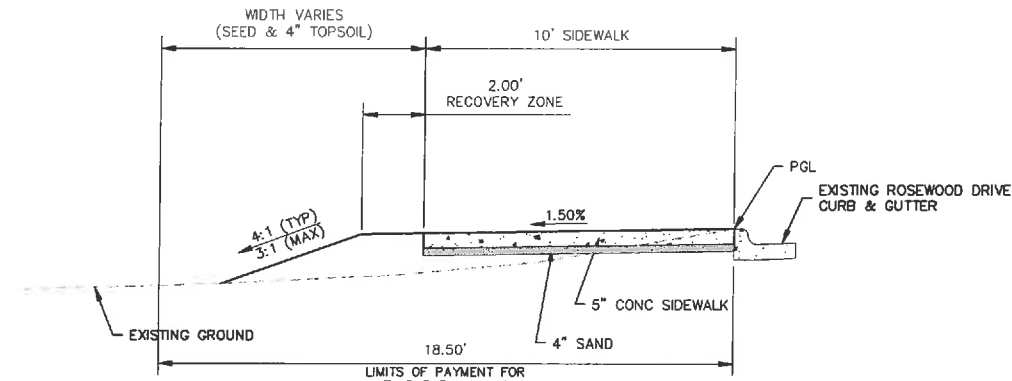
MITCHELL & ASSOCIATES, INC.
 ENGINEERING & SURVEYING
 102 N. COLLEGE STREET
 KILLEEN, TEXAS 76541
 PHONE: (254) 634-5541 FAX: (254) 634-2141
 TEXAS BOARD OF PROFESSIONAL ENGINEERS TFM REGISTRATION NO. 3241
 T. B. P. L. S. FIRM REGISTRATION NO. 100204-00

CITY OF KILLEEN
ROSEWOOD DRIVE
EXTENSION

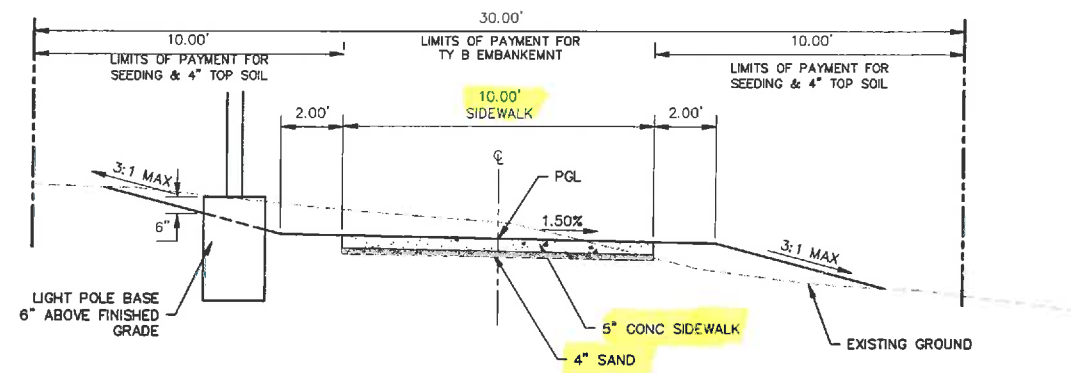
PROJECT LAYOUT & CONTROL
HERITAGE OAKS SEG 4

FED. NO.	PROJECT NO.	HIGHWAY NO.	
6	STP 2015(995)	CS	
STATE	DIST.	COUNTY	SHEET NO.
TEXAS	WACO	BELL	
	CONT.	CONT.	C005
0909	36	152, ETC.	

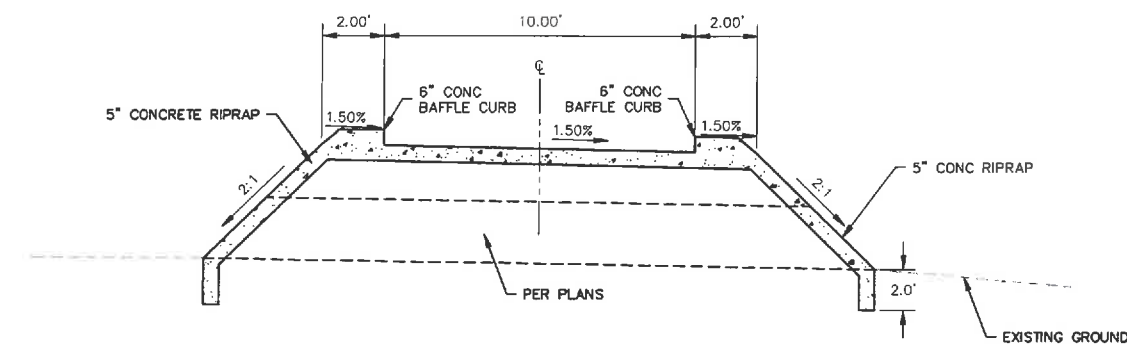
8:00 AM - 5:00 PM, MONDAY - FRIDAY
 9:00 AM - 5:00 PM, SATURDAY
 10:00 AM - 5:00 PM, SUNDAY
 10:00 AM - 5:00 PM, HOLIDAYS



PROPOSED HERITAGE OAKS SEG. #3 TYPICAL SECTION
STA 10+09.98 - STA 48+29.13



PROPOSED HERITAGE OAKS SEG #3 PURSER PARK CONNECTION TYPICAL SECTION
STA 10+10.00 - STA 12+65.63
STA 12+98.63 - STA 19+00.60



PROPOSED LOW WATER CREEK CROSSING PURSER PARK CONNECTION TYPICAL SECTION
STA 12+65.63 - STA 12+98.63

- NOTES:
1. CONCRETE SHALL BE TXDOT CLASS A CONCRETE.
 2. SIDEWALK REINFORCEMENT SHALL BE #3 BARS @ 18" O.C.E.W.
 3. SIDEWALK CROSS SLOPE SHALL NOT EXCEED 2.0%
 4. 5" CONC MOW STRIPS WILL NOT BE PAID FOR DIRECTLY BUT SHALL BE CONSIDERED SIUBSIDIARY TO ITEM 423.

For Interim Review Only
These documents are released for the purpose of review and comment under the authority of
MIKE W. KRIEDEL
#83017
AUGUST 28, 2017
They are not to be used for construction purposes.

**ISSUED FOR 95%
REVIEW AND
COMMENT.**

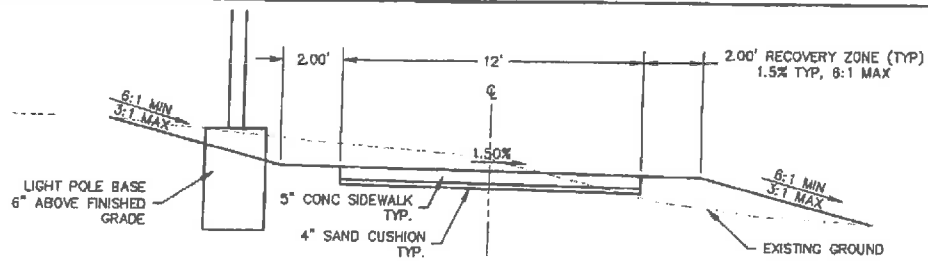
NO.	DATE	REVISION	BY

MITCHELL & ASSOCIATES, INC.
ENGINEERING & SURVEYING
102 N. COLLEGE STREET
KILLEEN, TEXAS 76541
PHONE: (254) 634-5541 FAX: (254) 634-2141
TEXAS BOARD OF PROFESSIONAL ENGINEERS FIRM REGISTRATION NO. 5241
T. B. P. L. S. FIRM REGISTRATION NO. 100204-00

CITY OF KILLEEN
**ROSEWOOD DRIVE
EXTENSION**

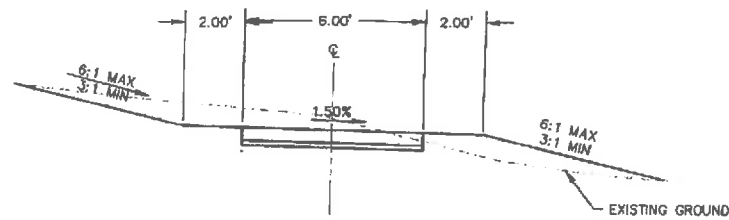
**HERITAGE OAKS SEG 3
TYPICAL SECTIONS**

FED. RD. DIV. NO.	PROJECT NO.	HIGHWAY NO.	SHEET NO.
6	STP 2015(995)	CS	C008
STATE	DIST.	COUNTY	
TEXAS	WACO	BELL	
CONT.	SECT.	CONT.	
0909	36	152,ETC.	



PROPOSED HERITAGE OAKS SEG #4 TYPICAL SECTION
 STA 11+93.79 - STA 19+72.07
 STA 20+68.29 - STA 31+89.59
 STA 32+95.15 - STA 69+22.31
 STA 70+60.79 - STA 75+50
 STA 87+07.68 - STA 95+96.89

PROPOSED HERITAGE OAKS SEG #4 CONNECTION 1 TYPICAL SECTION
 STA 15+44.94 - STA 19+14.27
 STA 19+96.93 - STA 20+92.47



PROPOSED HERITAGE OAKS SEG #4 CONNECTION 1 TYPICAL SECTION

STA 10+00.00 - STA 13+66.42
 STA 14+32.68 - STA 15+24.58
 STA 21+04.47 - STA 22+42.69

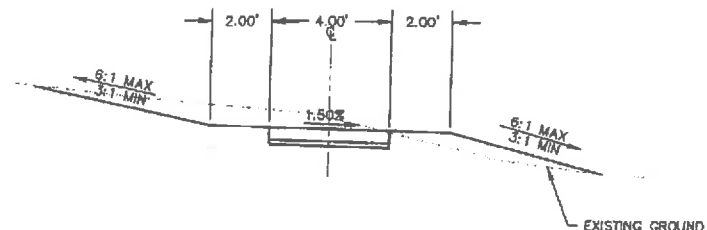
SIDEWALK TRANS STA FROM 6' TO 12'
 STA 15+24.58 - STA 15+44.94

PROPOSED HERITAGE OAKS SEG #4 CONNECTION 2 TYPICAL SECTION
 STA 10+66.23 - STA 14+57.54

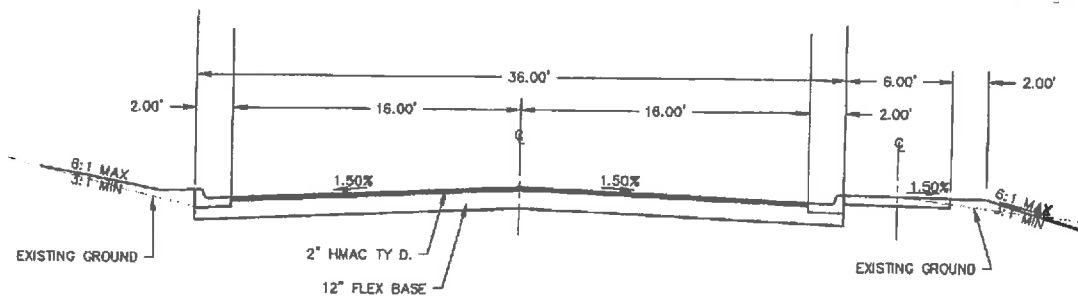
PROPOSED HERITAGE OAKS SEG #4 CONNECTION 3 TYPICAL SECTION
 STA 10+00.00 - STA 19+24.29
 STA 20+64.13 - STA 21+26.92

PROPOSED HERITAGE OAKS SEG #4 CONNECTION 4 TYPICAL SECTION
 STA 10+06.00 - STA 12+56.19

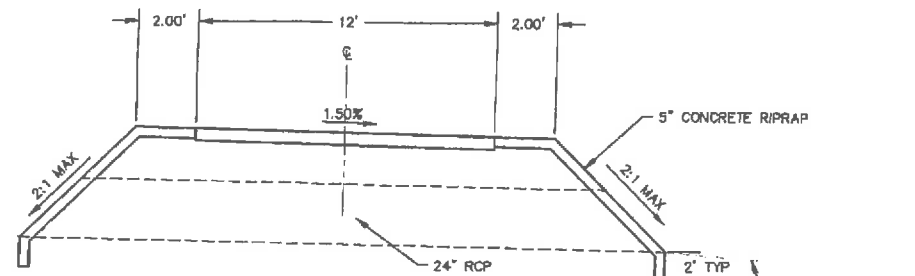
PROPOSED HERITAGE OAKS SEG #4 CONNECTION 5 TYPICAL SECTION
 STA 10+06.00 - STA 11+79.10



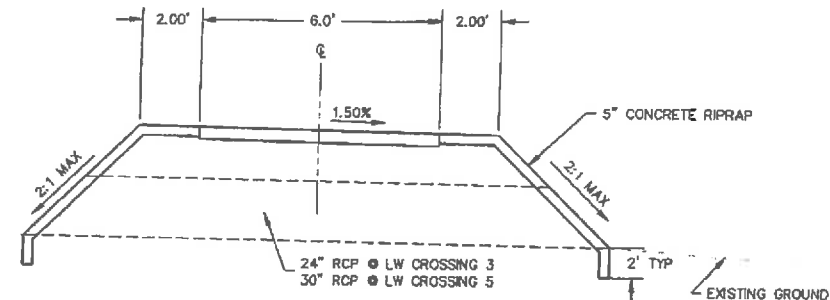
PROPOSED HERITAGE OAKS SEG #4 TYPICAL SECTION
 STA 10+25.74 - STA 11+63.45
SIDEWALK TRANS STA FROM 4' TO 12'
 STA 11+63.45 - STA 11+93.79



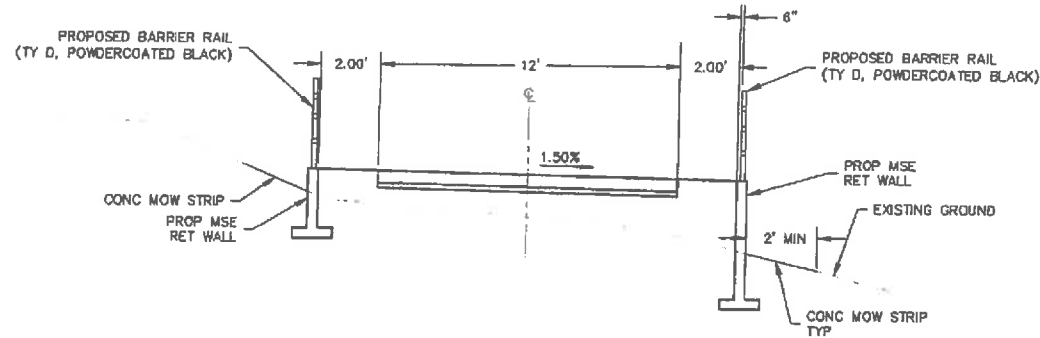
TYPICAL SECTION PYRITE DRIVE
 STA 10+23.33 - STA 14+29.46



PROPOSED HERITAGE OAKS SEG #4 LOW WATER CROSSING 1 TYPICAL SECTION
 STA 19+72.07 - STA 20+88.29
PROPOSED HERITAGE OAKS SEG #4 LOW WATER CROSSING 2 TYPICAL SECTION
 STA 31+89.59 - STA 32+95.15
PROPOSED HERITAGE OAKS SEG #4 LOW WATER CROSSING 4 TYPICAL SECTION
 STA 69+22.31 - STA 70+60.79
PROPOSED HERITAGE OAKS SEG #4 CONNECTION 1 LOW WATER CROSSING 6 TYPICAL SECTION
 STA 19+14.27 - STA 19+96.93



PROPOSED HERITAGE OAKS SEG #4 CONNECTION 3 LOW WATER CROSSING 3 TYPICAL SECTION
 STA 19+24.29 - STA 20+64.13
PROPOSED HERITAGE OAKS SEG #4 CONNECTION 1 LOW WATER CROSSING 5 TYPICAL SECTION
 STA 13+66.42 - STA 14+32.68



PROPOSED HERITAGE OAKS SEG #4 MSE RETAINING WALL TYPICAL SECTION
 STA 75+50 - STA 79+28.81

- NOTES:**
1. CONCRETE SHALL BE TXDOT CLASS A CONCRETE.
 2. REINFORCEMENT SHALL BE #3 BARS @ 18" O.C.E.W.
 3. SIDEWALK CROSS SLOPE SHALL NOT EXCEED 2.0%.

For Interim Review Only
 These documents are released
 for the purpose of review and
 comment under the authority of
 MIKE KRUEGER
 #95017
 JUNE 1, 2017
 They are not to be used for
 construction purposes.

**ISSUED FOR 90%
 REVIEW AND
 COMMENT.**

NO.	DATE	REVISION	BY







MITCHELL & ASSOCIATES, INC.
 ENGINEERING & SURVEYING
 102 N. COLLEGE STREET
 KILLEEN, TEXAS 76541
 PHONE: (254) 634-5541 FAX: (254) 634-2141
 TEXAS BOARD OF PROFESSIONAL ENGINEERS FIRM REGISTRATION NO. 7241
 E. R. P. L. S. FIRM REGISTRATION NO. 100294-00

**CITY OF KILLEEN
 ROSEWOOD DRIVE
 EXTENSION
 HERITAGE OAKS SEG 4
 TYPICAL SECTIONS**

FED. RD. DIV. NO.	PROJECT NO.	HIGHWAY NO.	SHEET NO.
6	STP 2015(995)	CS	C009
STATE	DIST.	COUNTY	
TEXAS	WACO	BELL	
CONT.	SECT.	CONT.	
0909	36	152, ETC.	

LEGEND

-  EXISTING CONTOUR LINES
-  SILT FENCE
-  CONSTRUCTION EXIT, ROCK RIPRAP OR ROCK FILTER DAM
-  INLET PROTECTION

NOTES:


1. THE CITY OF KILLEEN ENVIRONMENTAL INSPECTOR HAS THE AUTHORITY TO ADD AND/OR MODIFY EROSION CONTROL ON SITE TO KEEP IN COMPLIANCE WITH THE CITY OF KILLEEN RULES & REGULATIONS. MODIFICATIONS TO EROSION CONTROLS EXCEEDING THE BID AMOUNT WILL BE PAID FOR BY THE CITY OF KILLEEN.
2. CONTRACTOR WILL UTILIZE DUST CONTROL MEASURES DURING CONSTRUCTION.
3. IF DISTURBED AREA WILL NOT BE WORKED ON FOR 14 DAYS, THE DISTURBED AREA SHALL BE STABILIZED BY REVEGETATION, MULCH, OR MATTING.
4. ALL LOOSE EARTH MATERIAL MUST BE REMOVED FROM THE 100 YEAR FLOODPLAIN ON A DAILY BASIS.
5. SLOPES GREATER THAN 3:1 ARE NOT PROPOSED ON THIS PROJECT, EXCEPT WHEN PROTECTED WITH CONCRETE RIPRAP. IF THERE IS DISTURBANCE OF EXISTING SLOPES GREATER THAN 3:1, SOIL RETENTION BLANKETS WILL BE USED AT THE CONTRACTOR'S EXPENSE.



For Interim Review Only
 These documents are released for the purpose of review and comment under the authority of MIKE KRIEGL, #83017, JUNE 1, 2017. They are not to be used for construction purposes.

ISSUED FOR 90% REVIEW AND COMMENT.

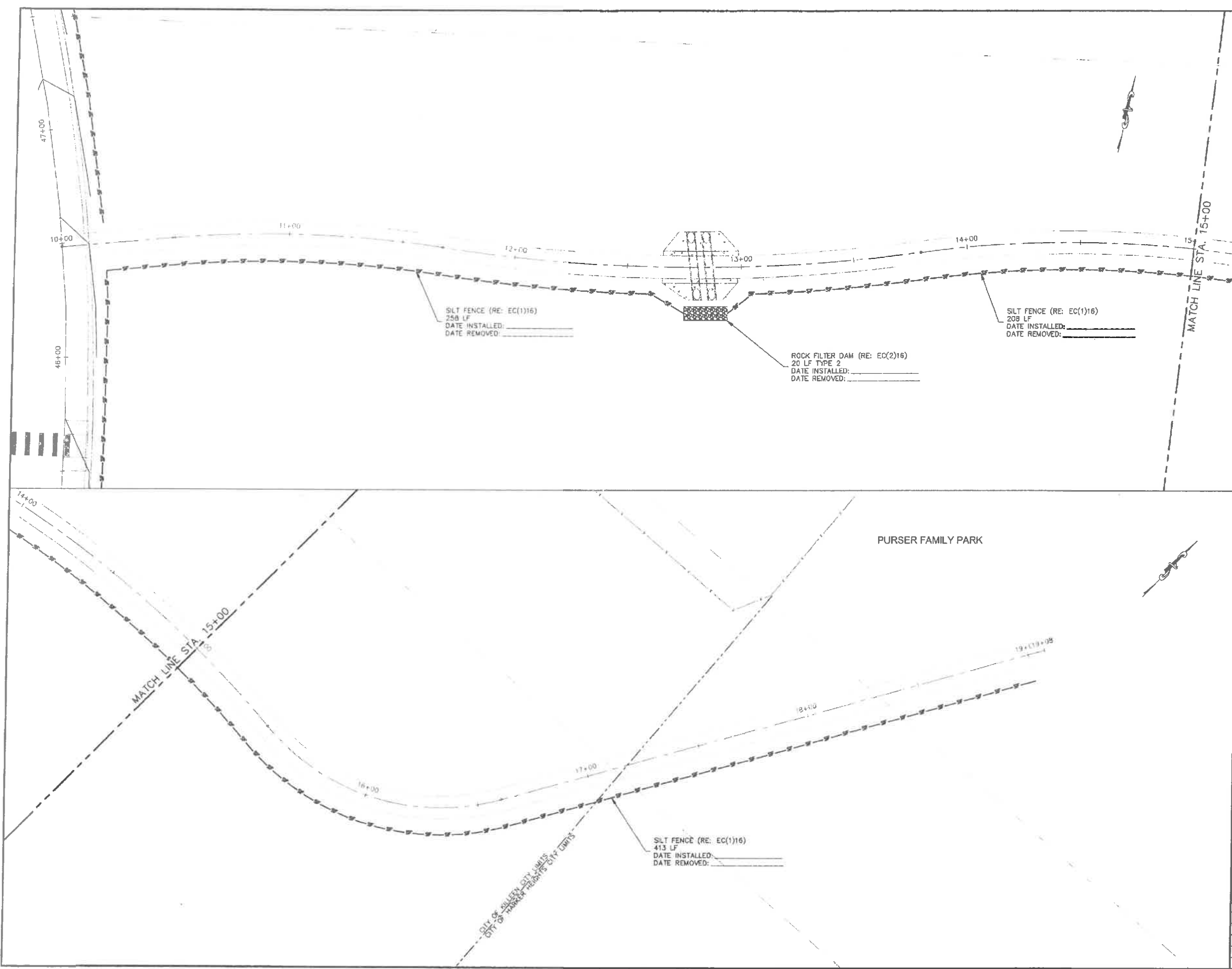
NO.	DATE	REVISION	BY



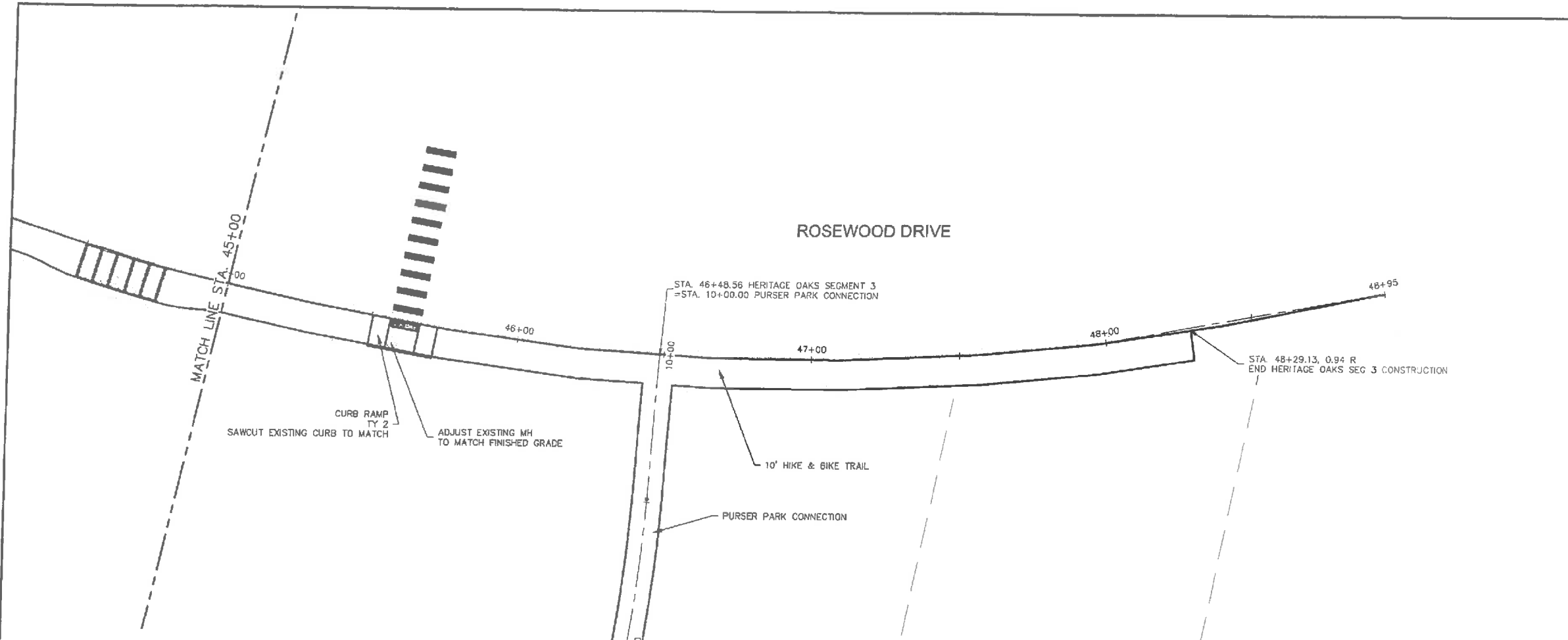
MITCHELL & ASSOCIATES, INC.
 ENGINEERING & SURVEYING
 102 N. COLLEGE STREET
 KILLEEN, TEXAS 76541
 PHONE: (254) 634-5541 FAX: (254) 634-2141
TEXAS BOARD OF PROFESSIONAL ENGINEERS FIRM REGISTRATION NO. 5241
 T. R. P. L. S. FIRM REGISTRATION NO. 100294-00

**CITY OF KILLEEN
 ROSEWOOD DRIVE
 EXTENSION
 PURSER CONNECTION
 EROSION CONTROL PLAN**

FED. RD. DIV. NO.	PROJECT NO.	HIGHWAY NO.	
B	STP 2015(395)	CS	
STATE	COUNTY	SHEET NO.	
TEXAS	BELL	C104	
CONT.	CONT.		
0809	152, ETC.		

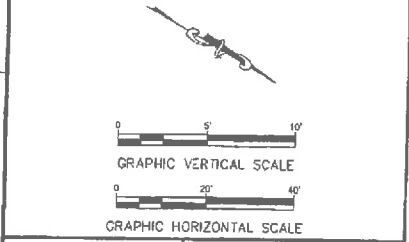
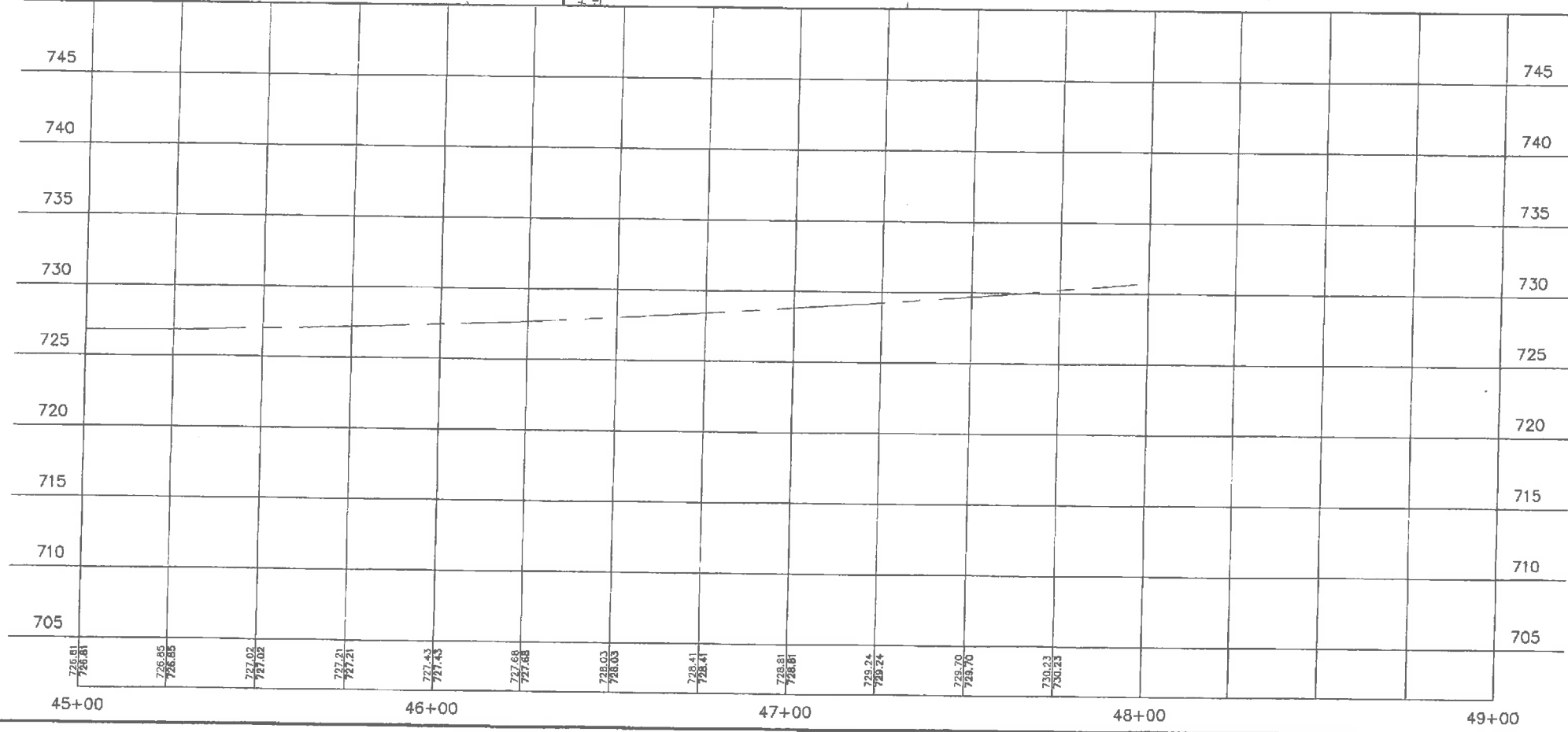


DRAWING NO. 152-ETC. SHEET NO. C104
 DATE: JUNE 1, 2017
 PROJECT: STP 2015(395)
 SHEET: C104 OF 152-ETC.



LEGEND

- EXISTING CONTOUR LINES
- PROPOSED CONTOUR LINES
- - - 100 YR FLOODPLAIN
- ▭ PROPOSED TRAIL/SIDEWALK
- EXISTING SANITARY SEWER
- EXISTING WOOD FENCE
- PROPOSED STORM DRAIN/CULVERT



For Interim Review Only
 These documents are released for the purpose of review and comment under the authority of MIKE KRECEL #63017 JUNE 1, 2017
 They are not to be used for construction purposes.

ISSUED FOR 90% REVIEW AND COMMENT.

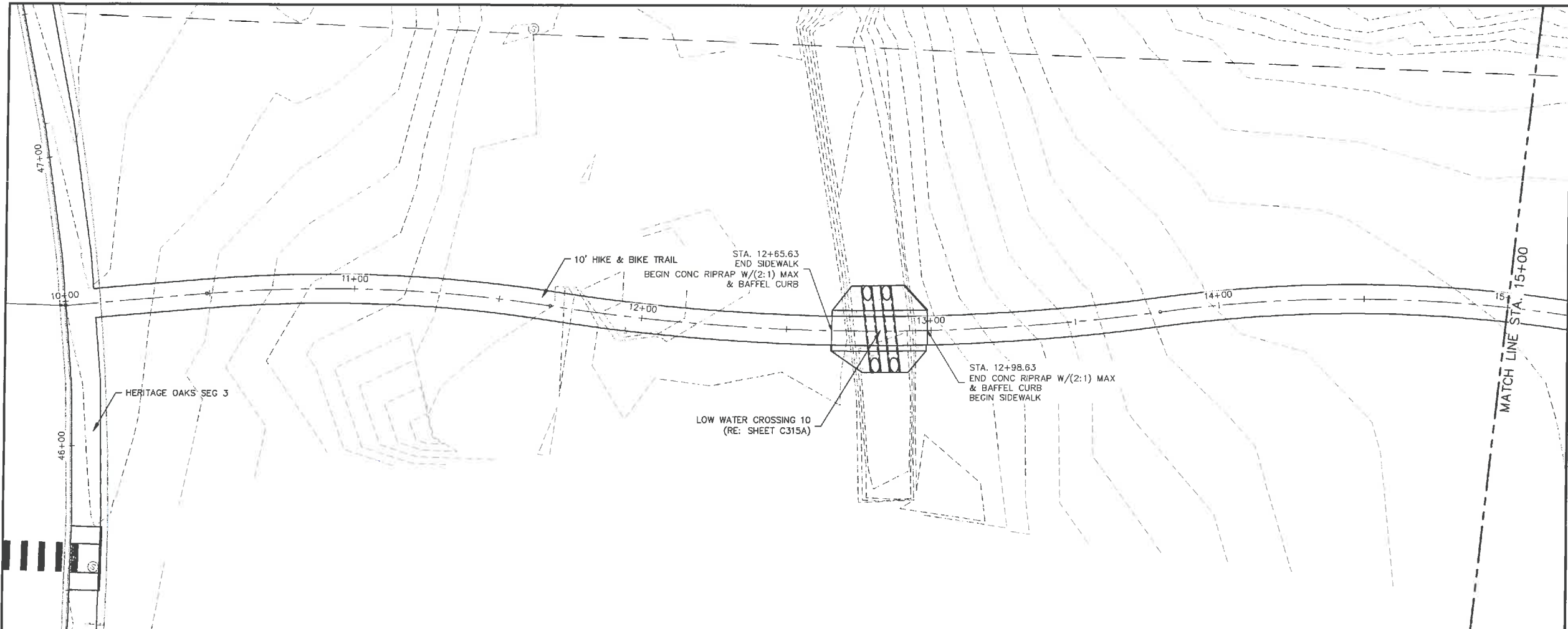
NO.	DATE	REVISION	BY

MITCHELL & ASSOCIATES, INC.
 ENGINEERING & SURVEYING
 102 N. COLLEGE STREET
 KILLEEN, TEXAS 76541
 PHONE: (254) 634-3541 FAX: (254) 634-2141
 TEXAS BOARD OF PROFESSIONAL ENGINEERS FIRM REGISTRATION NO. 3241
 U. S. E. S. FIRM REGISTRATION NO. 100254-08

CITY OF KILLEEN
ROSEWOOD DRIVE EXTENSION
 HERITAGE OAKS SEGMENT 3
 PLAN & PROFILE (STA 45+00-END)

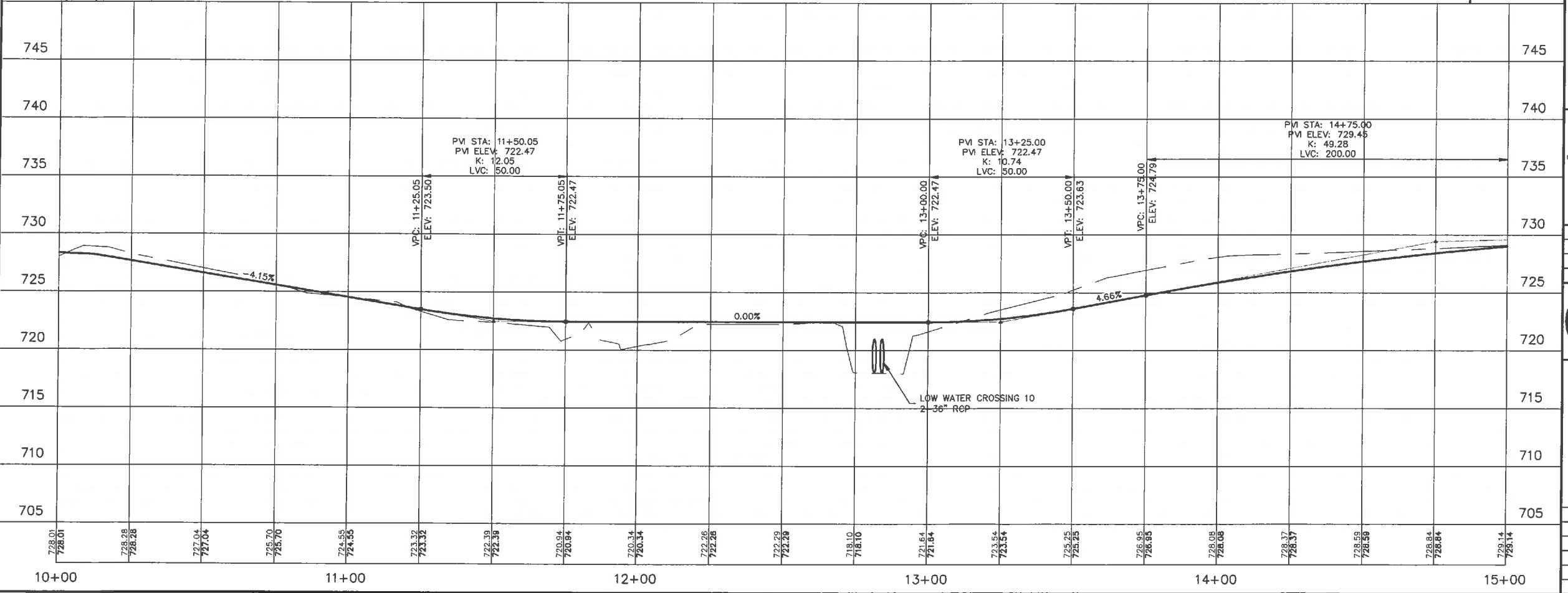
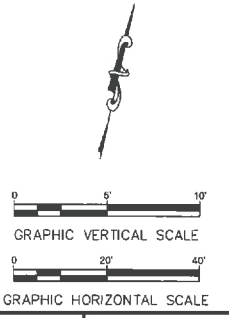
FED. RD. DIV. NO.	PROJECT NO.	HIGHWAY NO.
6	STP 2015(995)	CS
STATE	DIST.	COUNTY
TEXAS	WACO	BELL
CONT.	SECT.	CONT.
0909	36	152.ETC.
SHEET NO.		
C215		

1. NUMBER AND DATE OF REVISIONS: 01. 02. 03. 04. 05. 06. 07. 08. 09. 10. 11. 12. 13. 14. 15. 16. 17. 18. 19. 20. 21. 22. 23. 24. 25. 26. 27. 28. 29. 30. 31. 32. 33. 34. 35. 36. 37. 38. 39. 40. 41. 42. 43. 44. 45. 46. 47. 48. 49. 50. 51. 52. 53. 54. 55. 56. 57. 58. 59. 60. 61. 62. 63. 64. 65. 66. 67. 68. 69. 70. 71. 72. 73. 74. 75. 76. 77. 78. 79. 80. 81. 82. 83. 84. 85. 86. 87. 88. 89. 90. 91. 92. 93. 94. 95. 96. 97. 98. 99. 100.



LEGEND

- EXISTING CONTOUR LINES
- PROPOSED CONTOUR LINES
- 100 YR FLOODPLAIN
- PROPOSED TRAIL/SIDEWALK
- EXISTING SANITARY SEWER
- EXISTING WOOD FENCE
- PROPOSED STORM DRAIN/CULVERT



For Interim Review Only
 These documents are released for the purpose of review and comment under the authority of MIKE W. KRIEGL, #63017, AUGUST 28, 2017. They are not to be used for construction purposes.

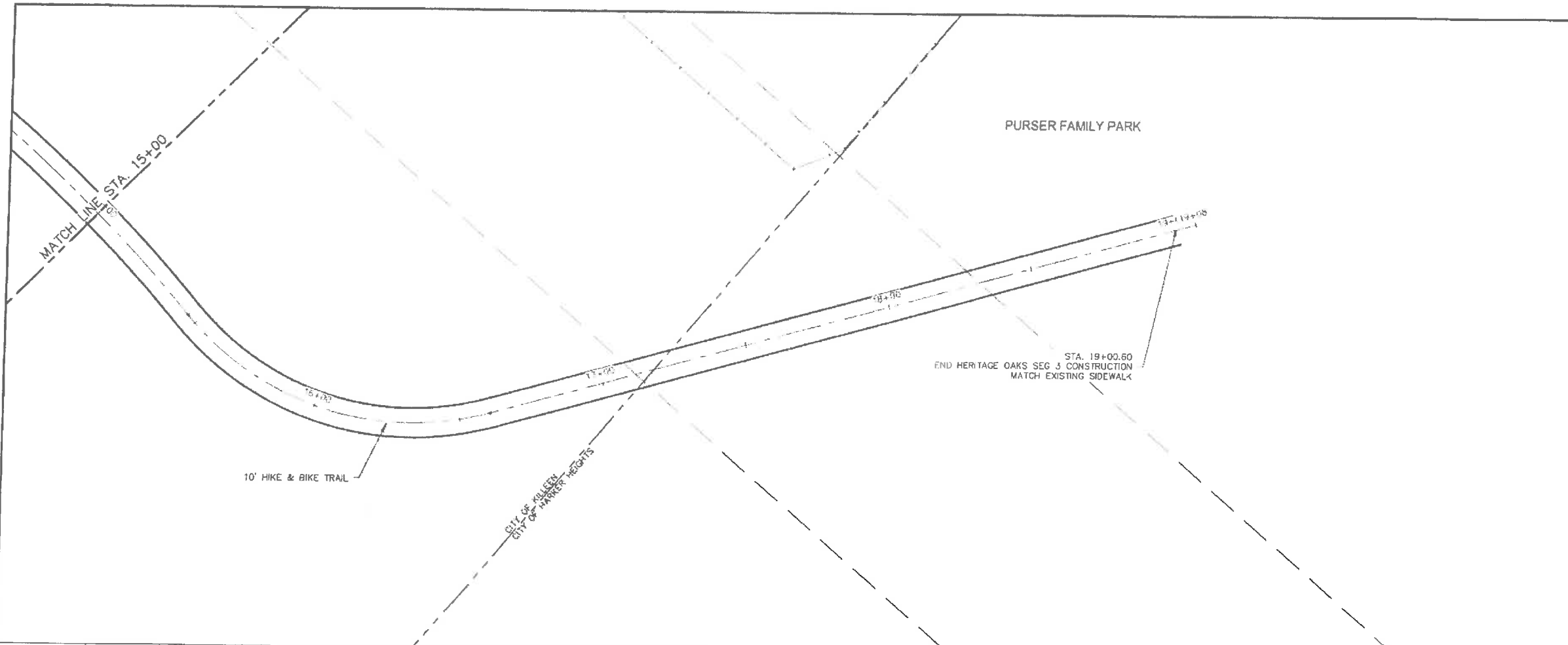
ISSUED FOR 95% REVIEW AND COMMENT.

NO.	DATE	REVISION	BY

MITCHELL & ASSOCIATES, INC.
 ENGINEERING & SURVEYING
 102 N. COLLEGE STREET
 KILLEEN, TEXAS 76541
 PHONE: (254) 634-5541 FAX: (254) 634-2141
TEXAS BOARD OF PROFESSIONAL ENGINEERS FIRM REGISTRATION NO. 5241
 T. B. P. L. S. FIRM REGISTRATION NO. 100204-00

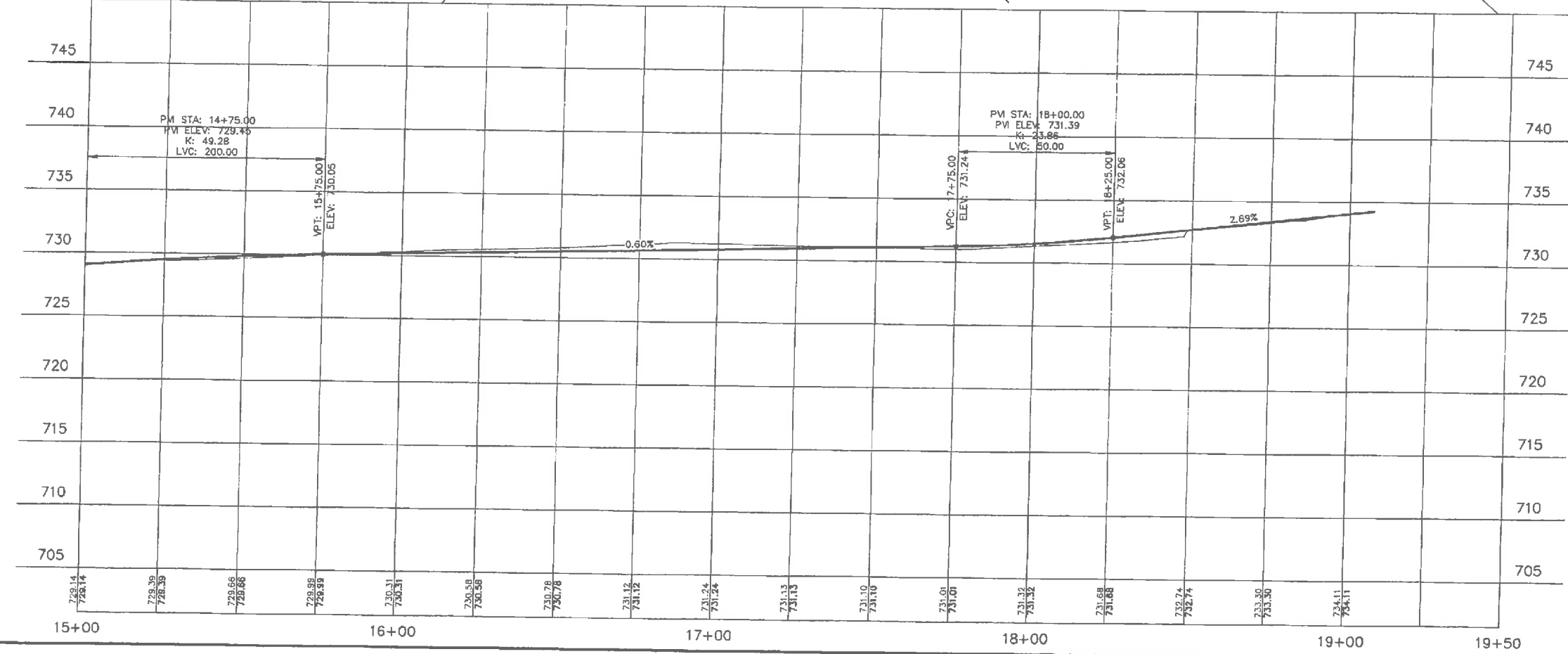
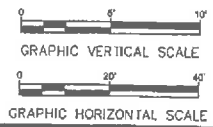
CITY OF KILLEEN
ROSEWOOD DRIVE EXTENSION
PURSER CONNECTION PLAN & PROFILE (STA 10+00-15+00)

FED. RD. DIV. NO.	PROJECT NO.	HIGHWAY NO.
6	STP 2015(995)	CS
STATE	DIST.	COUNTY
TEXAS	WACO	BELL
CONT.	SECT.	CONT.
0909	36	152,ETC.
SHEET NO.		
C216		



LEGEND

- EXISTING CONTOUR LINES
- PROPOSED CONTOUR LINES
- 100 YR FLOODPLAIN
- PROPOSED TRAIL/SIDEWALK
- EXISTING SANITARY SEWER
- EXISTING WOOD FENCE
- PROPOSED STORM DRAIN/CULVERT



For Interim Review Only
 These documents are released for the purpose of review and comment under the authority of MIKE KRIEDEL #83017 JUNE 1, 2017. They are not to be used for construction purposes.

ISSUED FOR 90% REVIEW AND COMMENT.

NO.	DATE	REVISION	BY

MITCHELL & ASSOCIATES, INC.
 ENGINEERING & SURVEYING
 102 N. COLLEGE STREET
 KILLEEN, TEXAS 76541
 PHONE: (254) 834-5541 FAX: (254) 834-2141
 TEXAS BOARD OF PROFESSIONAL ENGINEERS FIRM REGISTRATION NO. 3241
 E. & P. L. S. FIRM REGISTRATION NO. 100204-08

CITY OF KILLEEN
ROSEWOOD DRIVE EXTENSION
PURSER CONNECTION PLAN & PROFILE (STA 15+00-END)

FED. RD. DIST. NO.	PROJECT NO.	HIGHWAY NO.
6	STP 2015(995)	CS
STATE	DIST.	COUNTY
TEXAS	WACO	BELL
CONT.	SECT.	CONT.
0909	36	152.ETC.
SHEET NO.		
C217		