



LOA FOR TWO (2) MOTOR CONTROL CENTERS AT LIFT STATIONS #22 & #23

RS-24-150

August 20, 2024

Background and Findings

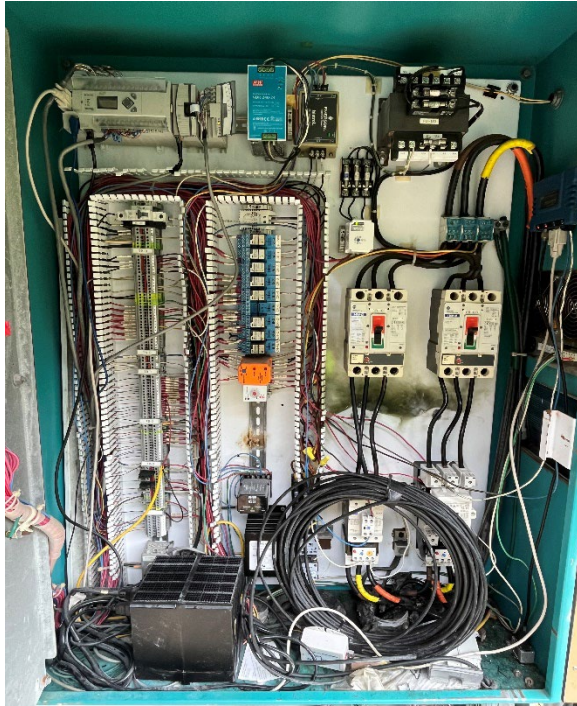
- ❑ Lift Station #22 serves the areas north of Reese Creek and east of Bunny Trail and on average pumps 16 MG of wastewater per month.
- ❑ Lift Station #23 was built in 2000, serves the area north of Reese Creek and west of Bunny Trail and pumps an average of 7.8 MG of wastewater per month.
- ❑ Motor Control Centers (MCC) are required in lift stations by Texas Commission on Environmental Quality (TCEQ) as it is an assembly to control electric motors in one central location for easy maintenance of the lift stations.

Background Cont.

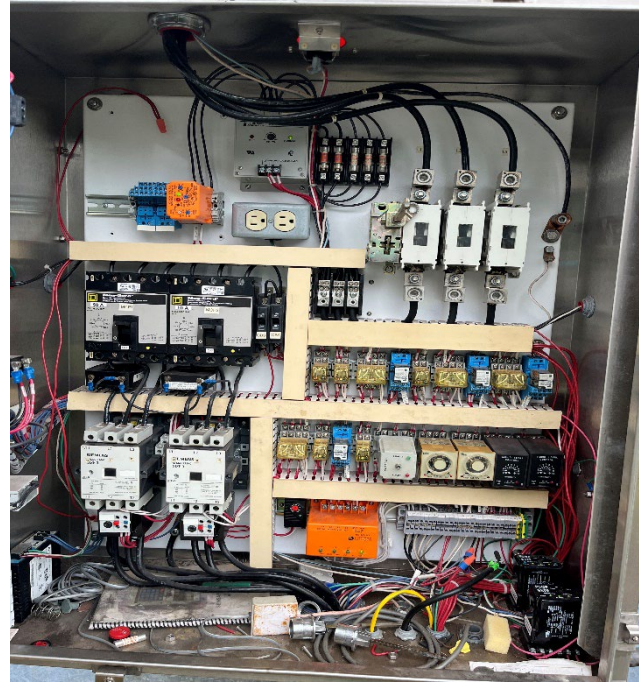
- Motor Control Centers have a life expectancy of approximately 20 years.
- A quote was received from The Brandt Companies, LLC on BuyBoard contract #733-24 to provide and install two (2) Motor Control Centers (MCC's) in the total amount of \$130,671.
 - Cost at Lift Station #22 for MCC is \$83,790
 - Cost at Lift Station #23 for MCC is \$46,881.

MCC Lift Station #22 and #23

4



MCC LS #22



MCC LS #23

Recommendation

- City Council authorize the City Manager, or designee, to execute a Letter of Agreement with The Brandt Companies, LLC in the total amount of \$130,671 and authorize the City Manager, or designee, to execute any and all change orders within the amounts set by State and Local law.