



DISTRICT 4 PARK OPPORTUNITIES: CITY OF KILLEEN PROPERTIES

DS-23-092

September 19, 2023

Considerations

2

- Access – ADA, Pedestrian/vehicular
- Parking
- Flood Zone
- Zoning
- CPTED (Crime Prevention Through Environmental Design)

Ft Hood Regional Trail/Robinette Community Park

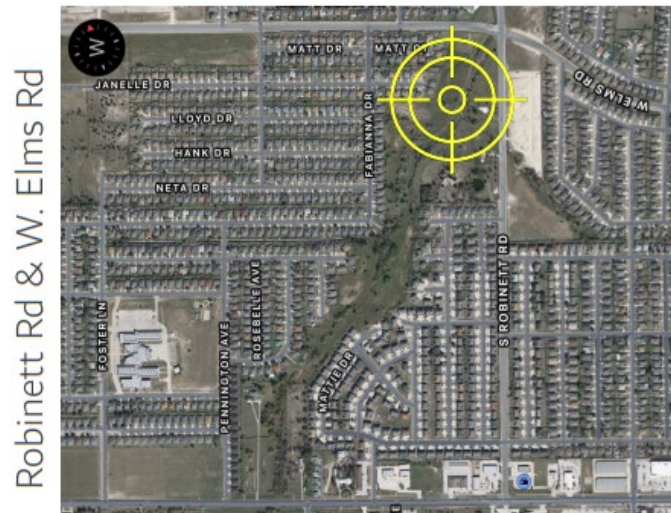
3

Opportunities:

- Alignment with Parks and Open Space Master Plan: Goal TR11: Identify funding and develop a southwest greenway extension of the Ft Hood Regional Trail.
- Add amenities such as parking
- Trail Grant opportunities (TPWD/KTMPO)- Segments 2 and 3 would extend to Clear Creek Rd (SH 201)

Constraints:

- Majority of property is in the floodway/floodplain
- Access locations minimal
- Some property may have to be acquired



Saddle Ridge Pocket Park

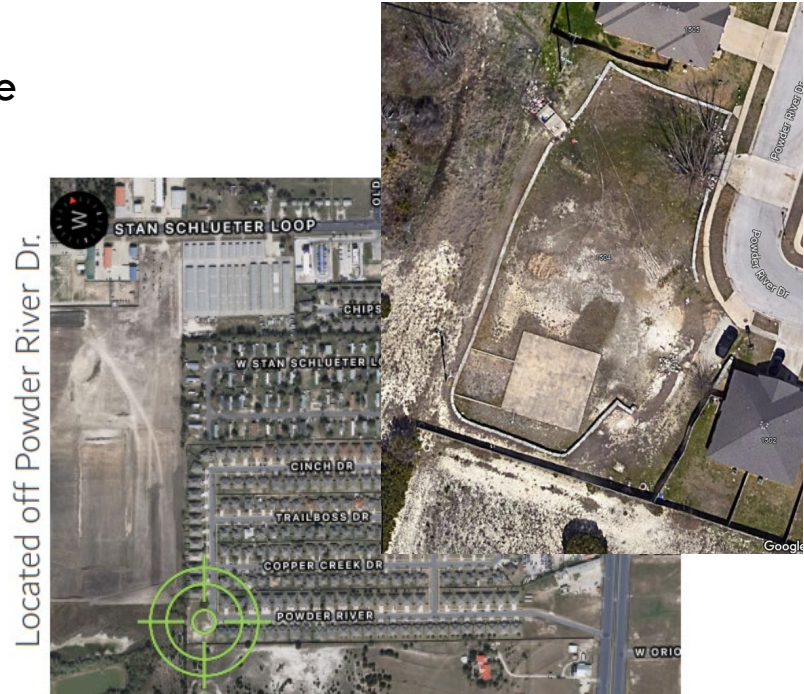
4

Opportunities:

- Add basketball hoop and sidewalk at grade
- Regrade around slab
- Add small picnic area
- Sidewalk for ADA to existing slab

Constraints:

- Detention Basin
- Not ADA Compliant
- Small size
- Proximity to neighbors (CPTED)
- No on street or off street parking



Estancia West Neighborhood Park

5

Opportunities:

- Sidewalk into basin to soccer area for ADA
- Add small picnic area

Constraints:

- Detention Basin
- Not ADA Compliant
- Proximity to neighbors (CPTED)
- No on street or off-street parking

Clear Creek Rd & Stan Schlueter Lp.



Eagle Valley Neighborhood Park

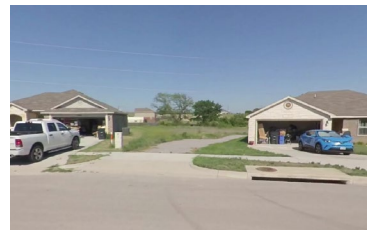
6

Opportunities:

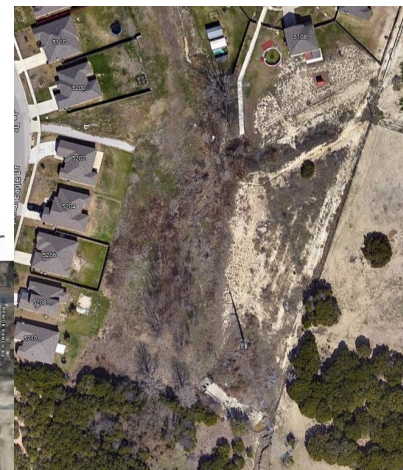
- ADA loop trail
- Picnic area

Constraints:

- Landlocked
- Not visible from the street (CPTED)
- No on street or off-street parking
- Limited access between homes



Located off W. Stan Schlueter



Landing Neighborhood Park

7

Opportunities:

Constraints:

- Landlocked
- Not visible from the street (CPTED)
- No on street or off-street parking

