



# FIRE DEPARTMENT LIVE FIRE TRAINING TOWER

RS-26-057

April 21, 2026

# Fire Department Live Fire Training Tower

2

- Part of the original Station 4/EOC/Training Center plan was to include a Live Fire Training Tower.
- Removed from the original build to be included later.
- Expenditure approved in the FY26 budget.
  - ▣ \$1,102,000 total CIP funding budgeted

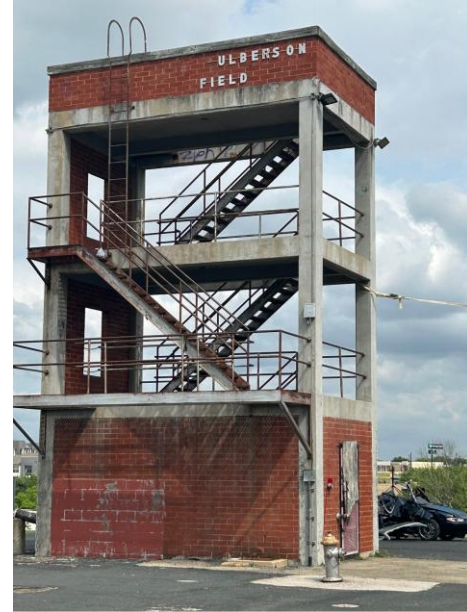
# Background

3

- Live fire training conducted in 3 shipping containers welded together by firefighters more than 20 years ago.
- Current “tower” at Conder Park is about 35 feet and more than 40 years old.
  - ▣ Unable to hold live fire training
  - ▣ Have had to clean waste and garbage from squatters.
  - ▣ Does not have elevated anchor points
  - ▣ Currently using water towers for high angle rescue training
    - Off site, less control over safety, moving equipment, setup
    - Same for confined space

# Current Fire Training Facilities

4



# Required Features of New Facility

5

- ❑ 30-year service life (minimum)
- ❑ NFPA Compliant
- ❑ 45 foot height tower
- ❑ Weather-resistant metal
- ❑ Concrete foundation & piers
- ❑ Shuttered windows
- ❑ Prop storage/garage
- ❑ 2 burn rooms (minimum)
- ❑ Interior/exterior stairs
- ❑ Rappelling anchor
- ❑ Sprinkler & riser system
- ❑ Confined space rescue
- ❑ Movable wall system maze
- ❑ Slip resistant roof with vent cutouts
- ❑ Furniture fuel racks
- ❑ Accommodate TCFP certification testing

# Alternatives Considered – Fire Facilities

6

- ❑ Fire Facilities
- ❑ **\$1,266,000** (before co-op discount) “Turn-key”.
  - ❑ Includes building prefab
  - ❑ Includes cost of on-site assembly
  - ❑ Includes foundation



# Alternatives Considered – WHP Training Towers

7

- ❑ WHP Training Towers
- ❑ \$1,023,362 “Estimate” as of November 25
  - ▣ Does not include foundation/concrete (estimate \$197,422)
- ❑ Total - **\$1,220,784**



# Alternatives Considered - Symtech

8

- \$1,063,062.65 (with co-op discount)
  - ▣ Includes building prefab
  - ▣ Includes cost of on-site assembly
  - ▣ Does not include foundation/concrete
    - costs estimated to be \$39,376
- Total - **\$1,102,438.65**



# Estimated Construction Costs

Fire Facilities	WHP	Symtech
\$1,266,000	\$1,023,362	\$1,063,062.65
concrete included	\$197,422 concrete	\$39,376 concrete
<b>\$1,266,000</b>	<b>\$1,220,784</b>	<b>\$1,102,438.65</b>

***The decision to recommend Symtech is not based solely on the lowest quoted amount. This vendor was able to provide the expected quality and ALL of the required features that were identified by the Fire Department Training Division build team.***

# Fiscal Impact

10

- Fire Training Tower \$1,083,212.00
  - ▣ Co-op discount \$20,149.35
  - ▣ **Total \$1,063,062.65**
  
- Future Additional Costs:
  - ▣ Concrete - Estimated \$39,376
- 3<sup>rd</sup> party engineer – Owner Representative
  - ▣ Budgeted item through the Engineering Department
  - ▣ Approximately \$30,000

# Recommendation

Staff recommends authorizing the City Manager, or his designee, to execute the contract with Symtech Live Fire Simulation Technology (Sourcewell Contract #102325-SYM) in the amount of \$1,063,062.65 and execute the purchase of the Live Fire Training Tower and that the City Manager or his designee is expressly authorized to execute any and all change orders within the amounts set by state and local law.